





# About Pro Display

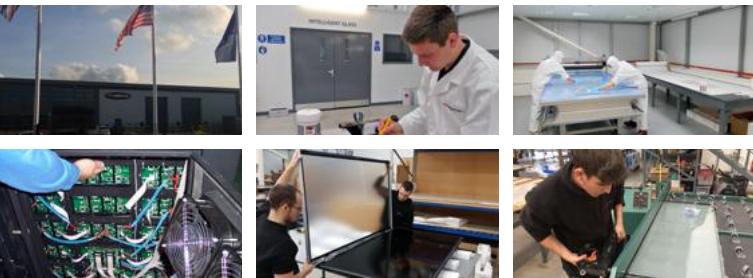
Pro Display was born to innovate, changing the face of visual display as we know it today. We are a British manufacturer at the forefront of display technology worldwide, focused on new and exciting ways to advertise, inform and entertain.

We bring together vision, sound and touch with design flair, technical innovation and expert knowledge to create a truly unique range of display solutions.

## The Pro Display Group Includes:

- Pro Display – for audiovisual and digital signage technologies
- Intelligent Glass – for switchable smart glass and film technologies
- intouch – for interactive multi-touch technologies

Pro Display's technologies are specified by resellers and integrators around the globe for leading brands including; BBC, Sky Sports, ITV, Bloomberg, Microsoft, Google, the Oscars, GSK, P&G, Coca Cola, Jaguar, Rolls Royce and many more.



Our headquarters in the north of England is home to a number of trade-secret production and manufacturing processes, developed over many years.

Look inside our purpose-built facility and you will find a team of experienced engineers producing some of the world's leading display technologies. Every production process and technique is unique to Pro Display, designed to offer our customers the very best product quality and reliability.

## How to buy

To find out more about Pro Display's products, and how to buy, please:

- email [sales@prodisplay.com](mailto:sales@prodisplay.com)
- call +44 1226 361 306
- or visit [prodisplay.com](http://prodisplay.com)

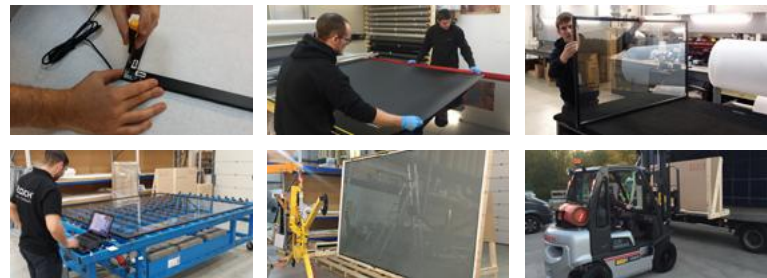
## History

Pro Display has a rich heritage of innovation in the professional visual display market. Our origins include the first full-colour LED screens introduced into Europe in the 1990s and LED perimeter systems in the early 2000s.

Pro Display continues to make substantial investment in R&D, developing its range of optical screens and films to meet the needs of the commercial and residential AV markets, and many other industry sectors.

## Innovation

Pro Display's rigid optical projection screen technologies – Digital Glass and SunScreen – have caught the interest of major global projector manufacturers for their outstanding image quality, and performance with the latest ultra-short throw projection hardware.



Recent investment in production techniques and specialist equipment has allowed Pro Display to manufacture a full range of rigid large format projection screens in sizes up to 8 metres by 3 metres.

## Why Choose Pro Display?

- Unique and innovative display technologies
- 25 years research & development in optical screens
- Patented technologies and processes
- Quality and reliability
- CE / UL certified solutions
- Export award winners with known shipper status
- Exporting to over 150 countries
- Global trade reseller network

Paul Beswick, CEO

## Made in Britain



Pro Display is a British manufacturer with its European headquarters near Sheffield, UK.

Here we manufacture, assemble and dispatch a wide range of professional grade visual display solutions, smart glass and interactive touch technologies.

If you're interested in reselling Pro Display products, visit our website today to sign up as a Registered Reseller, and share in our vision!



## Worldwide Shipping



In 2019, Pro Display shipped to over 80 countries worldwide. In the last 5 years we've shipped to a total of more than 130.

This means that we understand the rigours and regulations of international shipping. Our export team works hard to ensure that your products arrive exactly when and where you need them, along with all the correct export documentation.

We also have our own in-house wood crating department to produce hand-made protective crates bespoke to each shipment. This ensures that your products arrive in perfect shape.

## Award Winning Manufacturer



Pro Display has won a number of industry awards including Live Event of the Year for its 39 screens on stage at the Oscars, plus Export Awards recognising us as a leading British manufacturer.

Our aim is to provide the highest quality, most reliable display technologies – not just to the AV industry, but everywhere that display quality matters.

Event organisers, marketing agencies, sign makers, IT firms, office fitters, galleries, museums... the list is endless. Wherever there is an audience, there is a need to inform them, entertain them, advertise to them and interact with them through touch technologies.

# The SCREENGALLERY

Merchant Gate  
Wakefield WF1 2TS  
United Kingdom

Book your appointment today...  
Call us on +44 1226 361 306



## PRODISPLAY®

Optical Rear Projection Screens . . . . .	5
Optical Rear Projection Films . . . . .	6
Optical Projection Films . . . . .	7
Specialist Rear Projection Screens . . . . .	8
Ultra Short Throw Rear Projection Screens . . . . .	9
Switchable Smart Rear Projection Screens . . . . .	10
Optical Large Format Projection Screens . . . . .	11
Optical Front Projection Screens . . . . .	12
Optical Front Projection Films . . . . .	14

## AV & Digital Signage Solutions

Specialist Front Projection Screens . . . . .	15
Optical Dual Projection Screens . . . . .	16
Optical Anti-Glare Screen Solutions . . . . .	17
Mirrored Screen Technology . . . . .	18
LCD Display Solutions . . . . .	20
Transparent Display Solutions . . . . .	21
Large Format LED Screens . . . . .	22
Surface Sound Technology . . . . .	24
Screen Accessories . . . . .	25



## INTELLIGENT GLASS®

Single Glazed Switchable Smart Glass . . . . .	29
Laminate Switchable Smart Glass . . . . .	29
Double Glazed Switchable Smart Glass . . . . .	30
Switchable Smart Film . . . . .	30

## Switchable Smart Glass Technology

Switchable Smart Glass Vision Panel . . . . .	30
Switchable Smart Glass Projection Wall . . . . .	31
Switchable Smart Glass Accessories . . . . .	31

## intouch™

Interactive Projection Foils . . . . .	33
Clear Interactive Touch Foils . . . . .	34
Projected Capacitive Touch Screen Overlays . . . . .	35
Retrofit Touch Frames (infrared) . . . . .	36

## Touch Screen Technologies

Ultra Short Throw Projection Solutions . . . . .	37
Touch Screens . . . . .	38
Interactive Kiosks . . . . .	39
Specialist Touch Solutions . . . . .	40





Pro Display has been designing and developing optical screen technologies for more than a decade. We are an award winning British manufacturer offering a unique and innovative range of products that cover a wide variety of industry applications across numerous global markets.

Our range of AV and Digital Signage solutions includes:

## Specialist Optical Projection Materials

Pro Display's specialist optical projection materials include both rigid screens and self adhesive films for front, rear and dual projection applications.

Pro Display's screen technologies have been designed to work in some of the most challenging environments and offer superior brightness, contrast and resolution in high ambient light, daylight and even direct sunlight.

Products include large format projection screens up to 8 x 3 metres, ultra short throw projection screens, sun readable projection screens, switchable projection screens and projection screens with surface sound technology.

## Mirrored Screen Technology

Our mirrored screen technology, Mirrorvision includes smart TVs, advertising screens, retail displays, rear projection screens and retrofit glass overlays to fit any type of LCD/LED monitor.

## Specialist LCD/LED Screens

Our specialist monitors include screens with built-in media players, high brightness screens, outdoor screens, kiosks, transparent LCD screens and touch screen monitors.

## Large Format LED Displays

Pro Display are experts in large format LED displays, including a complete range of indoor and outdoor modules with resolutions starting at 0.9mm pixel pitch.

## Transparent LCD/OLED Screens

From Transparent LCD displays, to bespoke furniture with integrated transparent screens, Pro Display are proud to be one of the limited number of British manufacturers who specialise in Transparent technology.

## Optical Anti-Glare Screen Solutions

Our anti-glare screen solutions include a range of glass overlays and a self adhesive film which can be retrofitted to any screen to protect the image.

Pro Display's AV and digital signage screens have been shipped and installed all over the world.

## Typical applications

### General AV



### Digital Signage



### Corporate



### Leisure



### Broadcast



### Visitor Attractions



Resellers and integrators specify Pro Display products for some of the world's leading brands:





## Pro Diffusion

### Optical acrylic screen for rear projection applications

A versatile neutral-grey diffusion screen with superior brightness, contrast and extremely wide viewing angles.

#### Features

- 3mm optical acrylic screen
- Peak gain: 3.0
- Viewing angle: 180°
- Aspect ratios: 16:9, 16:10 & 4:3
- HD / 4K image quality
- Custom shapes & sizes available upon request

#### Typical Applications

- Information displays
- Advertising screens
- Exhibitions & conferences
- Hotels, bars & clubs
- Sports & leisure centres
- Shopping centres & malls

Diagonal (16:9)	32"	42"	55"	65"	72"	80"	92"	120"	134"	
Screen Size (mm)	708 x 398	930 x 523	1218 x 685	1439 x 809	1594 x 897	1771 x 996	2037 x 1146	2657 x 1494	2966 x 1669	Full sheet
Pro Diffusion	£ 195	£ 295	£ 475	£ 595	£ 795	£ 995	£ 1,295	£ 1,625	£ 1,875	£ 1,995



## Clearview

### Optical acrylic screen for rear projection applications

A highly transparent optical diffusion screen for a holographic projection effect.

#### Features

- 3mm optical acrylic screen
- Transparent / Pepper's Ghost effect
- Transmittance: 82%
- Viewing angle: 140°
- Aspect ratios: 16:9, 16:10 & 4:3
- Custom shapes & sizes available upon request

#### Typical Applications

- POS displays & promotions
- Attention grabbing screens
- Museums & visitor attractions
- Trade shows & exhibitions
- Concerts & theatres
- Live events, bars & clubs

Diagonal (16:9)	32"	42"	55"	65"	72"	80"	92"	120"	134"	
Screen Size (mm)	708 x 398	930 x 523	1218 x 685	1439 x 809	1594 x 897	1771 x 996	2037 x 1146	2657 x 1494	2966 x 1669	Full sheet
Clearview	£ 215	£ 325	£ 525	£ 650	£ 875	£ 1,095	£ 1,425	£ 1,750	£ 1,995	£ 2,195



## Ultra Black

### Optical acrylic screen for rear projection applications

A black tinted diffusion screen offering superior contrast, resolution and colour reproduction.

#### Features

- 3mm optical acrylic screen
- Peak gain: 0.65
- Viewing angle: 160°
- Aspect ratios: 16:9, 16:10 & 4:3
- Superior HD / 4K image quality
- Custom shapes & sizes available upon request

#### Typical Applications

- Video & entertainment screens
- Advertising screens
- Simulators & control rooms
- Broadcasting & film studios
- Boardrooms & auditoriums
- Concerts, theatres & live events

Diagonal (16:9)	32"	42"	55"	65"	72"	80"	92"	120"	134"	
Screen Size (mm)	708 x 398	930 x 523	1218 x 685	1439 x 809	1594 x 897	1771 x 996	2037 x 1146	2657 x 1494	2966 x 1669	Full sheet
Ultra Black	£ 215	£ 325	£ 525	£ 650	£ 875	£ 1,095	£ 1,425	£ 1,750	£ 1,995	£ 2,195

## Installation Accessories

Installation accessories are available for these products. For sizes 55" - 92" we recommend extrusion bars (top and bottom). For sizes above 92", we recommend a fully framed solution- please see page 25.



## High Gain



### Self-adhesive optical screen film for rear projection applications

A light grey diffusion film for high brightness applications using low power projectors for HD / 4K quality.

#### Features

- Easy to apply to glass or Plexiglas
- Peak gain: 5.0
- Viewing angle: 140°
- UV stable & no shrinkage
- Aspect ratios: 16:9, 16:10 & 4:3
- Custom shapes & sizes available upon request

#### Typical Applications

- Store window displays
- Glass walls & partitions
- POS displays & promotions
- Information displays
- Exhibitions & live events
- Presentation screens



Diagonal (16:9)	32"	42"	55"	65"	72"	80"	92"	120"
Screen Size (mm)	708 x 398	930 x 523	1218 x 685	1439 x 809	1594 x 897	1771 x 996	2037 x 1146	2657 x 1494
High Gain	£ 95	£ 125	£ 215	£ 295	£ 415	£ 495	£ 575	£ 650

## Pro Diffusion



### Self-adhesive optical screen film for rear projection applications

A versatile neutral-grey diffusion film offering high contrast, brightness and excellent colour reproduction for HD / 4K quality images.

#### Features

- Easy to apply to glass or Plexiglas
- Peak gain: 4.0
- Viewing angle: 140°
- UV stable & no shrinkage
- Aspect ratios: 16:9, 16:10 & 4:3
- Custom shapes & sizes available upon request

#### Typical Applications

- Store window displays
- Glass walls & partitions
- Advertising screens
- Information displays
- Exhibitions & conferences
- Shopping centres & malls



Diagonal (16:9)	32"	42"	55"	65"	72"	80"	92"	120"
Screen Size (mm)	708 x 398	930 x 523	1218 x 685	1439 x 809	1594 x 897	1771 x 996	2037 x 1146	2657 x 1494
Pro Diffusion	£ 105	£ 135	£ 235	£ 325	£ 450	£ 535	£ 615	£ 695

## Clearview



### Self-adhesive optical screen film for rear projection applications

A highly transparent optical diffusion film for a holographic / Pepper's Ghost projection effect.

#### Features

- Easy to apply to glass or Plexiglas
- Transmittance: 86%
- Viewing angle: 120°
- UV stable & no shrinkage
- Aspect ratios: 16:9, 16:10 & 4:3
- Custom shapes & sizes available upon request

#### Typical Applications

- Store window displays
- Glass walls & partitions
- POS displays & promotions
- Museums & visitor attractions
- Exhibitions & live events
- Concerts & theatres



Diagonal (16:9)	32"	42"	55"	65"	72"	80"	92"	120"
Screen Size (mm)	708 x 398	930 x 523	1218 x 685	1439 x 809	1594 x 897	1771 x 996	2037 x 1146	2657 x 1494
Clearview	£ 120	£ 150	£ 250	£ 350	£ 485	£ 570	£ 650	£ 750



## Ultra Black



### Self-adhesive optical screen film for rear projection applications

A black tinted diffusion film offering superior contrast, resolution and colour reproduction for HD / 4K quality.

#### Features

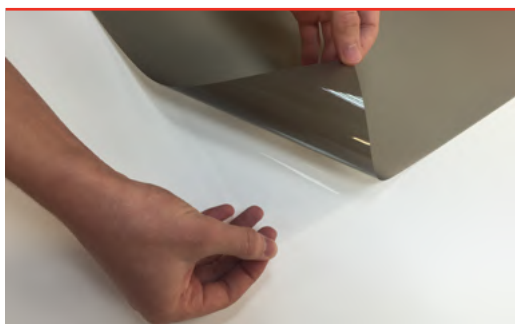
- Easy to apply to glass or Plexiglas
- Peak gain: 2.5
- Viewing angle: 160°
- UV stable & no shrinkage
- Aspect ratios: 16:9, 16:10 & 4:3
- Custom shapes & sizes

#### Typical Applications

- Glass walls & partitions
- Advertising screens
- Information displays
- Broadcast & control rooms
- Simulators & auditoriums
- Receptions & meeting rooms

Diagonal (16:9)	32"	42"	55"	65"	72"	80"	92"	120"
Screen Size (mm)	708 x 398	930 x 523	1218 x 685	1439 x 809	1594 x 897	1771 x 996	2037 x 1146	2657 x 1494
Ultra Black	£ 120	£ 150	£ 250	£ 350	£ 485	£ 570	£ 650	£ 750

## Per metre & wholesale roll pricing



### Self-adhesive optical screen films for rear projection applications

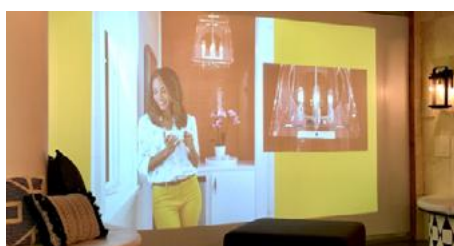
Various types of rear projection films are available to cover a wide range of applications with HD/4K quality.

- Self-adhesive film can be easily applied to either glass or Plexiglas
- Choice of Pro Diffusion, Clearview, Ultra Black, High Gain and White UST films (UV stable)
- Pieces of film can be joined to create large format projection surfaces (no shrinkage)
- Films are available per linear metre off the roll (roll width 1524mm)



Size	Per metre	10 metre roll	30 metre roll
Roll width (mm)	1524mm	1524mm	1524mm
High Gain	£ 165	£ 1,085	£ 2,600
Pro Diffusion	£ 175	£ 1,150	£ 2,750
Clearview	£ 195	£ 1,250	£ 2,950
Ultra Black	£ 195	£ 1,250	£ 2,950

Product	Price
Installation Kit (Squeegee, Spray Bottle, Gloves)	£ 15





## SunScreen Film



Sun-readable optical film for rear projection in high ambient light, daylight and sunlight

This unique light-rejecting film is suitable for both standard and short throw rear projection. Ideal for any type of window application offering bright, sharp and crystal clear images, reducing the need for high power projectors.

### Features

- Light-rejecting screen
- Filter blocks more than 85% of external light
- Viewing angle: 120°
- HD / 4K image quality
- Custom sizes & aspect ratios
- Projection angle 26° ± 5° for optimal viewing

### Typical Applications

- Window advertising screens
- Digital signage displays
- Outdoor video & advertising screens
- Information displays
- Shopping centres & visitor attractions
- Concerts & outdoor events



Diagonal (16:9)	32"	42"	55"	65"	72"	80"	100"
Screen Size (mm)	708 x 398	930 x 523	1218 x 685	1439 x 809	1594 x 897	1771 x 996	2214 x 1245
SunScreen Film	£ 395	£ 495	£ 695	£ 795	£ 995	£ 1,495	£ 1,995
Sunscreen Film Rolls	Per meter			10m Roll		30m Roll	
Roll Width	1370mm			1370mm		1370mm	
Price	£ 675			£ 4,995		£ 10,795	

Sunscreen Film has a maximum active area of 1300mm

## SunScreen Rigid Screen



Optical sun-readable screen for rear projection in high ambient light, daylight and sunlight

This unique light-rejecting screen is suitable for both standard and short throw rear projection. Ideal for any window application offering bright, sharp and crystal clear images, reducing the need for high power projectors.

### Features

- Rigid screen with light-rejecting filter
- Filter blocks more than 85% of external light
- Viewing angle: 120°
- HD / 4K image quality
- Custom sizes & aspect ratios
- Projection angle 26° ± 5° for optimal viewing

### Typical Applications

- Glass partition walls & store windows
- Outdoor advertising screens
- Mobile advertising vehicles
- Outdoor events & concerts
- Airports, train & bus stations
- Visitor attractions & stadiums



Diagonal (16:9)	55"	65"	80"	100"	120"	134"
Screen Size (mm)	1218 x 685	1439 x 809	1771 x 996	2214 x 1245	2657 x 1494	2966 x 1669
SunScreen Rigid Screen	£ 995	£ 1,295	£ 1,795	£ 2,495	£ 3,495	£ 3,995

We recommend that you use a frame with this product – for framing options see page 25. For outdoor applications the screen surface must be covered and protected with either a glass or polycarbonate fascia.







## Digital Glass

### Rigid optical screen for ultra short throw rear projection applications

This screen is manufactured using a special process that coats our advanced optical projection layer (designed specifically for ultra short throw rear projection) directly onto ultra clear glass or cast acrylic. A cost effective large format Ultra HD / 4K screen for areas where space is limited and at a premium.

#### Features

- Neutral-grey (glass or acrylic screen)
- Peak gain: 0.65
- Viewing angle: 160°
- Suitable for edge blending
- Superior HD / 4K image quality
- Custom sizes & aspect ratios

#### Typical Applications

- Meeting rooms & boardrooms
- Exhibitions & conferences
- TV studios & control rooms
- Shops & shopping centres
- Airport, train & bus stations
- Museums & visitor attractions

Diagonal (16:9)	80"	98"	120"	134"	160"	185"
Screen Size (mm)	1771 x 996	2159 x 1214	2657 x 1494	2966 x 1669	3500 x 1968	4100 x 2306
Digital Glass (thickness 6-12mm)	£ 1,675	£ 2,475	£ 2,995	£ 3,825	£ 6,750	£ 9,995
Interactive Digital Glass with 6 point multi-touch (optional frames available)	£ 3,250	£ 4,995	£ 5,995	£ 7,150	£ 11,750	£ 15,750

Lightweight acrylic options are available on request. Optional edge blending & 3D coatings available. Please note: the glass is oversized on interactive screens.



## Digital Film

### Flexible optical film screen with frame for ultra short throw rear projection applications

A PVC rear projection film screen tensioned in an aluminium frame ideally suited for ultra short throw, 3D and edge blended projection applications.

#### Features

- Choice of advanced optical coating
- Coated PVC based optical screen
- Custom sizes available
- HD / 4K image quality
- Edge blend options available
- 3D options available

#### Typical Applications

- Visitor Attractions
- Trade Shows & Exhibitions
- Simulators & Auditoriums
- Schools, Colleges & Universities
- Corporate Offices
- TV Studios & Control Rooms

Diagonal (16:9)	80"	98"	120"	134"	160"	185"
Screen Size (mm)	1771 x 996	2159 x 1214	2657 x 1494	2966 x 1669	3500 x 1968	4100 x 2306
Digital Film (with Aluminium Frame)	£ 1,195	£ 1,695	£ 1,995	£ 2,795	£ 4,695	£ 5,995



## Flexible Projection Film

### PVC fabric screens for tensioned and suspension applications

Various screen types are available to cover a range of applications with HD/4K quality.

#### Features

- Choice of advanced optical coating
- Ultra Short Throw compatible
- Edge blend options available
- 3D options available
- Coated PVC based optical screen
- Seamed large format screen sizes available

#### Typical Applications

- Museums & Visitor Attractions
- Theatre & Live Events
- Trade Shows & Exhibitions
- Simulation
- Auditorium & Conferences
- Meeting Rooms & Boardrooms

Size	0 - 10 (m²)	11 - 25 (m²)	26 - 50 (m²)	51 - 75 (m²)	76 - 100 (m²)	100+ (m²)
Rear / Dual Projection (per m²)	£ 125	£ 115	£ 95	£ 85	£ 80	£ 75
Front Projection (per m²)	£ 115	£ 105	£ 90	£ 80	£ 75	£ 65

## Switchable Smart Film Screen



### Switchable film screen for rear projection applications

Turns instantly from a clear transparent film into a HD /4K projection surface at the flick of a switch.



- Self adhesive switchable film (50/110vac)
- Simply apply to glass or other transparent surfaces
- Custom film sizes/aspect ratios available up to 3000 x 1500mm
- Multiple pieces can be joined to create video projection walls
- HD / 4K projection when frosted & holo effect when clear
- Price includes installation kit, transformer and RF remote control



Diagonal (16:9)	42"	55"	65"	80"	92"	120"
Screen Size (mm)	930 x 523	1218 x 685	1439 x 809	1771 x 996	2037 x 1146	2657 x 1494
Switchable Smart Film Screen	£ 425	£ 595	£ 765	£ 950	£ 1,275	£ 1,695

Please call for prices on custom film sizes.

## Switchable Smart Glass Screen



### Switchable glass screen for rear projection applications

Turns instantly from a clear glass panel into a HD / 4K rear projection surface at the flick of a switch.



- Ultra clear switchable glass screen (50/110vac)
- Standard screen sizes come complete with cable suspension system
- Custom glass panel sizes/aspect ratios available up to 6000 x 1800mm
- Multiple panels can be joined to create video projection walls
- HD / 4K projection when frosted & holo effect when clear
- Price includes transformer and RF remote control



Diagonal (16:9)	42"	55"	65"	80"	92"	120"	145"
Screen Size (mm)	930 x 523	1218 x 685	1439 x 809	1771 x 996	2037 x 1146	2657 x 1494	3200 x 1800
Glass thickness	6mm	6mm	6mm	8mm	8mm	10mm	10mm
Switchable Smart Glass Screen	£ 725	£ 995	£ 1,295	£ 1,695	£ 1,995	£ 2,995	£ 3,995

Please call for prices on custom glass sizes.

## Switchable Smart Glass Stand



### Designer switchable glass stand for rear projection applications

Turns instantly from a clear glass panel into a HD / 4K rear projection surface at the flick of a switch.

#### Features

- Optical switchable smart glass projection screen with designer base unit
- Glass dimensions: 10(D) x 985(W) x 1750(H) mm
- Satin silver aluminium base: 370(D) x 985(W) x 140(H) mm
- Multiple units can be linked to create a video projection wall
- HD / 4K projection when frosted & holo effect when clear
- Price includes transformer and RF remote control

#### Typical Applications

- Corporate offices
- Reception areas
- Meeting rooms
- POS displays
- Information displays
- Exhibitions & conferences



Glass Size	985mm x 1750mm
Switchable Smart Glass Stand	£ 1,750





## Rigid Large Format Rear & Dual Projection Screens



Optical glass or lightweight acrylic screens up to 8000 x 3000mm

A special optical diffusion layer is coated down directly onto either laminate glass or acrylic, designed specifically for large format rear projection applications.

### Features

- Coatings for ultra short throw and edge blending
- Viewing angles: 140°-160°
- Optical glass sizes up to 6000 x 3000mm and lightweight acrylic sizes up to 8000 x 3000mm
- Custom screen sizes and aspect ratios

### Typical Applications

- Auditoriums & meeting rooms
- TV studios & control rooms
- Airport, train & bus stations
- Museums & visitor attractions

Size (Width)

Sizing Available up to 8000mm

Sizing Available up to 3000mm (Glass Height)

POA

Edge blend and 3D coatings available on request. For the option of lightweight acrylic - please call for prices.



## Rigid Large Format Front Projection Screen



Optical front projection screens up to 8000 x 3000mm

A special optical projection layer is coated down directly onto a rigid substrate, designed specifically for large format front projection applications.

### Features

- Choose from a range of screen coatings: high gain, high contrast, wide viewing angles, 3D and sun readable
- Coatings for both short throw and edge blending
- Viewing angles: 120°-160°
- Custom screen sizes and aspect ratios

### Typical Applications

- Auditoriums & meeting rooms
- TV studios & control rooms
- Airport, train & bus stations
- Museums & visitor attractions
- Leisure facilities & music venues

Size (Width)

Sizing Available up to 8000mm

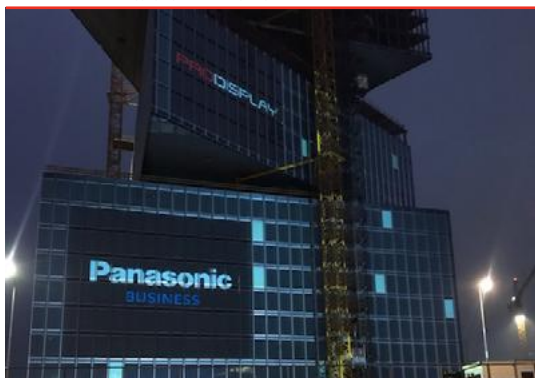
Sizing Available up to 3000mm (Glass Height)

POA

For the option of lightweight acrylic - please call for prices.



## Projection Mapping Film



A versatile projection mapping film for permanent or temporary installations

Self-adhesive projection mapping film available in front or rear projection options and suitable for internal or external installations.

### Features

- Internal or external application
- Transparent option available
- Front or rear projection options available
- Dry application and easy removal
- Available in cut sizes or rolls
- Permanent or temporary installation



Product

Price

Projection Mapping Film

POA



## ALR Front Projection Screen



### Light-rejecting screen for ultra-short throw & edge blending

This screen combines a high contrast projection layer and unique optical filter that rejects external light, providing stunning images with superior brightness, contrast and resolution.

#### Features

- Designed for UST projectors and edge blending
- Works in high ambient, daylight and even in sunlight
- High contrast, rich colours and perfect black levels
- Filter blocks more than 85% of external light
- Wide viewing angle: 160°
- Modular panels for large format projection walls

#### Typical Applications

- Any installation where space is at a premium
- TV studios & control rooms
- Exhibitions & conference facilities
- Airports, train & bus stations
- Boardrooms & meeting rooms
- Schools & universities
- Museums & visitor attractions



Diagonal	80" (16:9)	100" (16:9)	120" (16:9)	181" (32:9)	217" (32:9)
Screen Size (mm)	1771 x 996	2214 x 1245	2657 x 1494	4435 x 1250 (Edge Blend)	5320 x 1500 (Edge Blend)
ALR Front Projection Screen (Rigid)	£ 1,450	£ 1,750	£ 2,250	£ 6,450	£ 7,950
ALR Front Projection Screen (Film Only)	-	£ 1,275	£ 1,750	£ 3,950	£ 4,950

Custom / larger screen sizes also available on request - please call for details.

Not suitable for projectors with a lens throw ratio greater than 0.4:1 - please call for details.

## Ultra Gain Front Projection Screen



### High brightness rigid screens for front projection applications

Optical rigid front projection screens with a high gain surface for exceptional brightness, contrast and resolution.

#### Features

- Silver foiled reflective surface (3D Ready)
- Works in high ambient light & daylight
- Peak gain: 6.0
- Viewing angle: 160°
- HD / 4K image quality
- Custom screen sizes & aspect ratios

#### Typical Applications

- Information & advertising screens
- Atriums & glass partitions
- Airport, bus & rail stations
- Exhibitions & outdoor events
- Shopping centres & malls
- Leisure facilities & visitor attractions



Diagonal (16:9)	42"	55"	65"	72"	80"	92"	120"	134"
Screen Size (mm)	930 x 523	1218 x 685	1439 x 809	1594 x 897	1771 x 996	2037 x 1146	2657 x 1494	2966 x 1669
Ultra Gain	£ 295	£ 495	£ 675	£ 895	£ 1,195	£ 1,475	£ 1,750	£ 1,995

## Ultravision Front Projection Screen



### High contrast rigid screen for front projection applications

An advanced optical rigid front projection screen offering true colour reproduction, superior contrast and perfect black levels, to create life like images.

#### Features

- Silver grey foiled reflective surface
- Superior contrast & black levels
- Peak gain: 3.0
- Viewing angle: 120°
- Superior HD / 4K image quality
- Custom screen sizes & aspect ratios

#### Typical Applications

- Information & advertising screens
- Boardrooms & meeting rooms
- Hotels, bars & clubs
- Airports & visitor attractions
- Cinemas & entertainment venues
- Professional home theatre screens



Diagonal (16:9)	55"	65"	72"	80"	100"	110"
Screen Size (mm)	1218 x 685	1439 x 809	1594 x 897	1771 x 996	2214 x 1245	2429 x 1365
Ultravision	£ 595	£ 795	£ 1,075	£ 1,350	£ 1,625	£ 1,750





PROJECTOR  
AVAILABLE



WORKS IN HIGH  
AMBIENT LIGHT



FRAME  
INCLUDED



## Rigid front projection screen with surface sound technology

Optical high gain front projection screen where the HD / 4K screen surface is also a loudspeaker.

### Features

- Highly reflective screen (Ultra Gain – 3D Ready)
- Works in high ambient light & daylight
- Screen surface is a loudspeaker
- Includes frame & fixings to wall mount or suspend
- Viewing angle: 160°
- Custom screen sizes & aspect ratios

### Typical Applications

- Information & advertising screens
- Exhibitions & conferences
- Sports stadiums & leisure facilities
- Shopping centres & malls
- Concerts & outdoor events
- Auditoriums & arenas

Diagonal (16:9)	65"	80"	100"	120"	150"	200"	245"
Screen Size (mm)	1439 x 809	1771 x 996	2214 x 1245	2657 x 1494	3321 x 1868	4428 x 2491	5411 x 3041
Soundvision	£ 995	£ 1,750	£ 2,450	£ 2,950	£ 6,750	£ 9,950	£ 12,950



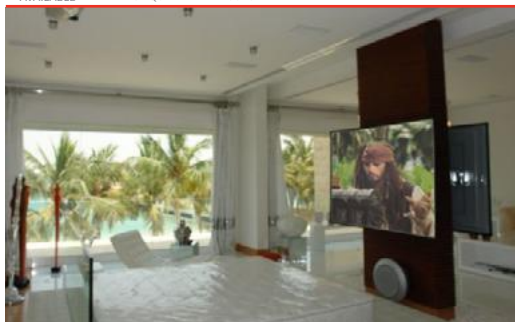
PROJECTOR  
AVAILABLE



HD / 4K  
IMAGE QUALITY



CURVED  
SUBSTRATE



## Soundvision 3D Cinematic Curve

### Parabolic curve screen with surface sound technology

This advanced high gain HD / 4K front projection screen has a parabolic curve for immersive 3D viewing.

### Features

- Ultra high gain surface
- Curved substrate
- Enhanced 3D viewing experience
- Superior image quality with HD / 4K resolution
- Screen surface is a loudspeaker
- Price includes active 3D glasses

### Typical Applications

- Home theatre & gaming
- Design & visualization
- Museums & visitor attractions
- POS displays & product launches
- Exhibitions & trade shows
- Virtual reality & simulation

Diagonal (16:9)	80"	100"	120"
Screen Size (mm)	1810 x 1030	2270 x 1300	2670 x 1500
Soundvision 3D	£ 1,750	£ 2,450	£ 2,950



PROJECTOR  
AVAILABLE



HD / 4K  
IMAGE QUALITY



SUPERIOR  
CONTRAST



## Soundvision Pro

### High contrast front projection screen with surface sound technology

An advanced optical front projection screen offering true colour reproduction, superior contrast and perfect black levels, to create lifelike images.

### Features

- Silver grey foiled reflective surface (Ultravision)
- Screen surface is a loudspeaker
- Superior contrast & black levels
- Includes satin silver frame & wall mounting studs
- Viewing angle: 120°
- Superior HD / 4K image quality

### Typical Applications

- Professional home theatre screen
- Boardrooms & meeting rooms
- Hotels, bars & clubs
- Museums & visitor attractions
- Cinemas & entertainment venues
- Retail stores & leisure facilities

Diagonal (16:9)	80"	100"	120"
Screen Size (mm)	1771 x 996	2270 x 1300	2670 x 1500
Soundvision Pro	£ 1,950	£ 2,750	£ 3,250

## Installation Accessories

Installation accessories are available for the products on this page, including wall mounts, floors stands and amplifiers. Please see from page 24 'Surface Sound Products' for more details.

## Ultra Gain



### Self-adhesive optical film for front projection applications

Optical front projection screens with a highly reflective surface for exceptional brightness, contrast and resolution. Designed to work in high ambient light and daylight.

#### Features

- Silver foiled reflective surface (3D Ready)
- Easy to apply to glass or similar smooth surfaces
- Peak gain: 6.0
- Viewing angle: 160°
- HD/4K image quality
- Custom screen sizes & aspect ratios

#### Typical Applications

- Glass walls & partitions
- Information & advertising screens
- Exhibitions & outdoor events
- Airport, bus & rail stations
- Shopping centres & malls
- Leisure facilities & visitor attractions



Diagonal (16:9)	32"	42"	55"	65"	72"	80"	92"	120"	140"
Screen Size (mm)	708 x 398	930 x 523	1218 x 685	1439 x 809	1594 x 897	1771 x 996	2037 x 1146	2657 x 1494	3092 x 1737
Ultra Gain	£ 150	£ 195	£ 295	£ 395	£ 495	£ 675	£ 795	£ 975	£ 1,175

## Per metre & wholesale roll pricing

### Self-adhesive optical screen film for front projection applications

Ultra Gain film on the roll for a wide range of high brightness front projection applications with HD / 4K quality.



- Self-adhesive film for application to glass or any similar smooth surface
- Designed to work in high ambient light and daylight
- Pieces of film can be joined to create large format projection surfaces
- Films are available per linear metre off the roll (roll width 1800mm)

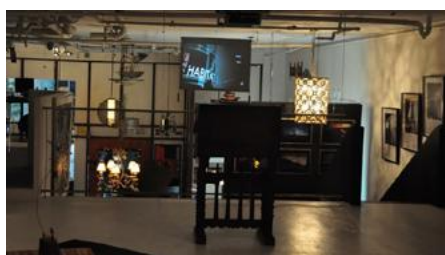
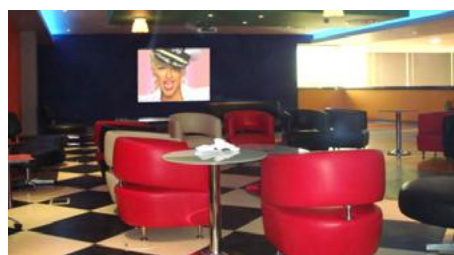


Size	Per metre	10 metre roll	30 metre roll
Roll width (mm)	1800mm	1800mm	1800mm
Ultra Gain	£ 275	£ 1,875	£ 4,500

Product	Price
Installation Kit (Squeegee, Spray Bottle, Gloves)	£ 15
Application Fluid	£ 7

Ultra Gain film has a 25mm border on both roll edges that is not coated, making the active projection area 1750mm wide.







## Switchable Smart Glass Screen



### Switchable glass screen for front / dual projection applications

Turns instantly from a clear glass panel into a HD / 4K rear projection surface at the flick of a switch.

- Tinted switchable glass screen (50/110vac)
- Standard screen sizes come complete with cable suspension system
- Custom glass panel sizes/aspect ratios available up to 6000 x 1800mm
- Multiple panels can be joined to create video projection walls
- HD / 4K projection when frosted & holo effect when clear
- Price includes transformer and RF remote control



Diagonal (16:9)	42"	55"	65"	80"	92"	120"	145"
Screen Size (mm)	930 x 523	1218 x 685	1439 x 809	1771 x 996	2037 x 1146	2657 x 1494	3200 x 1800
Glass thickness	6mm	6mm	6mm	8mm	8mm	10mm	10mm
Switchable Smart Glass Screen	£ 995	£ 1,295	£ 1,695	£ 2,250	£ 2,750	£ 3,750	£ 4,995

Front/dual projection switchable glass is designed as an effects screen rather than a normal presentation screen and requires the projector to be placed off axis – please call for more details. (Typical applications include: museums, visitor attractions, product launches, exhibitions & corporate events.)



## Clearvision



### Specialist transparent ultra short throw front projection technology

Optical front projection technology available as a glass screen or self-adhesive film supporting ultra-short throw projection while displaying an image on both sides of the display.

#### Features

- Transparent holographic effect
- Thickness - 120 micron
- Haze - 24%
- Light Transmission - 83%
- 10m Roll available (1524mm wide)
- 16:9, 16:10 & 4:3 aspect ratios available

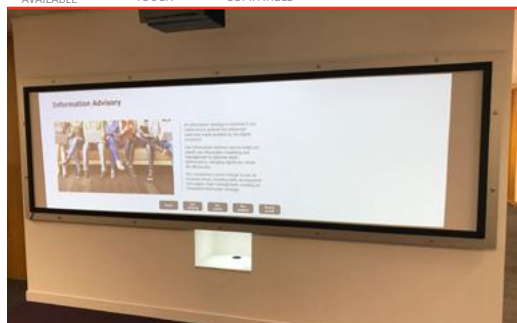
#### Typical Applications

- Museums & visitor attractions
- Theatres & live events
- Augmented Reality
- TV & broadcast
- Events & product launches
- Art Galleries

Diagonal (16:9)	32"	42"	55"	65"	72"	80"	100"	120"
Screen Size (mm)	708 x 398	930 x 523	1218 x 685	1439 x 809	1594 x 897	1771 x 996	2214 x 1245	2657 x 1494
Clearvision Transparent Glass Screen	-	£ 995	£ 1,495	£ 1,895	£ 2,495	£ 2,795	£ 3,495	£ 4,295
Clearvision Transparent Film	£ 495	£ 695	£ 995	£ 1,295	£ 1,795	£ 1,995	£ 2,495	£ 2,995
Clearvision Film Linear Meter Pricing (1524mm)	1-9m		£ 995 per meter		10m Roll Price		£ 8,995	



## Single / Dual Sided Front Projection UST Screen



### Rigid UST front projection screen for projecting on both sides

A low cost rigid acrylic screen suitable for dual sided front projection in high ambient conditions.

#### Features

- 5mm matt white rigid acrylic screen
- Dual sided projection surface
- Peak gain: 1.6
- Viewing angle: 160°
- HD / 4K image quality
- Custom screen sizes & aspect ratios

#### Typical Applications

- Ideal for whiteboard applications
- Information & advertising screens
- Schools & universities
- Meeting & training rooms
- Exhibitions & conferences
- Shops & shopping centres

Diagonal (16:9)	32"	42"	55"	65"	72"	80"	92"	120"	134"	Full sheet
Screen Size (mm)	708 x 398	930 x 523	1218 x 685	1439 x 809	1594 x 897	1771 x 996	2037 x 1146	2657 x 1494	2966 x 1669	3000 x 2050
High Gain	£ 150	£ 195	£ 295	£ 425	£ 575	£ 725	£ 895	£ 1,150	£ 1,295	£ 1,450

High Gain front projection screens are dual-sided, allowing images to be shown on both sides using two projectors – suitable for use with ultra short throw projectors.

Please contact us for EURO € or USD \$ price lists. All prices are subject to wood crating and delivery charges, plus any local taxes. Prices may change without prior notice. Please get in touch with any questions, or to enquire about reselling Pro Display products | [prodisplay.com](http://prodisplay.com) | [sales@prodisplay.com](mailto:sales@prodisplay.com) | +44 1226 361 306

## 360° Dual Image Screen



### Dual sided screen for front or rear projection applications

Create an image viewable from both sides of the screen at the same time using just one projector. Available as a glass screen, acrylic screen or suspended poster system.

#### Features

- Off-white optical surface
- Image is displayed on both sides (reversed)
- Peak gain: 1.7-2.0 (front & rear)
- Viewing angle: 360°
- HD /4K image quality
- Custom screen sizes & aspect ratios

#### Typical Applications

- Information & advertising screens
- POS displays & product launches
- Museums & visitor attractions
- Exhibitions & trade shows
- Music venues & corporate events
- Hotels, pubs & clubs



Diagonal (16:9)	32"	42"	55"	65"	72"	80"	100"	120"	132"
Screen Size (mm)	708 x 398	930 x 523	1218 x 685	1439 x 809	1594 x 897	1771 x 996	2214 x 1245	2657 x 1494	2904 x 1632
360° Optical Glass Screen	£ 275	£ 395	£ 625	£ 795	£ 1,025	£ 1,495	£ 1,750	£ 2,175	£ 2,495
Product									Price (Per Cable)
Teardrop Suspension Kit									£ 75

Lightweight acrylic options are available on request.

## 360° Dual Image Film



### Dual sided self-adhesive film for front or rear projection applications

Create an image viewable from both sides of the film at the same time using just one projector. An off white screen film (120 micron) offering excellent contrast and resolution – HD / 4K quality images.

#### Features

- Easy to apply to glass or Plexiglas
- Peak gain: 1.7-2.0 (front & rear)
- Viewing angle: 360°
- UV stable & no shrinkage
- Aspect ratios: 16:9, 16:10 and 4:3
- Custom shapes & sizes

#### Typical Applications

- Store window displays
- Glass walls & partitions
- Information & advertising screens
- Product launches & events
- Museums & visitor attractions
- Concert venues & theatres



Diagonal (16:9)	32"	42"	55"	65"	72"	80"	100"	120"	132"
Screen Size (mm)	708 x 398	930 x 523	1218 x 685	1439 x 809	1594 x 897	1771 x 996	2214 x 1245	2657 x 1494	2904 x 1632
360° Film	£ 150	£ 195	£ 295	£ 395	£ 495	£ 725	£ 895	£ 995	£ 1,195

## Per metre & wholesale roll pricing

### Dual sided optical film for front or rear projection applications

360° film on the roll for a wide range of dual sided projection applications with HD / 4K quality images.



- Choose non adhesive or self-adhesive film for application to glass or any similar smooth surface
- Create an image viewable from both sides of the film at the same time using just one projector
- Pieces of film can be joined to create large format projection surfaces
- Films are available per linear metre off the roll (roll width 1650mm)



Size	Per metre	10 metre roll	30 metre roll
Roll width (mm)	1650mm	1650mm	1650mm
360° Film (self-adhesive)	£ 275	£ 1,875	£ 4,500
Product	Price		
Installation Kit (Squeegee, Spray Bottle, Gloves)	£ 15		

360° film has a 10mm border on both roll edges that is not coated with adhesive.



## Self-Adhesive Anti-Glare Film



Self-adhesive anti-glare film to minimise reflection and glare across glass, acrylic or windows

Anti-glare protection film is available in standard screen sizes, per metre off the roll and 10 metre or 50 metre rolls (width 1200mm).

- Self-adhesive film for application to glass, acrylic and other smooth transparent surfaces
- Minimises reflection and glare
- Easily applied to any screen or touchscreen surface
- UV stable hard coating forming an impact resistant shield
- Anti-scratch, anti-graffiti and chemical resistant
- Smooth writing surface, durable and easy to clean



Diagonal (16:9)	27"	32"	40"/42"	46"/47"	50"	55"	60"	65"	70"/72"	80"	84"	92"/95"
Anti-Glare Film	£ 65	£ 75	£ 95	£ 125	£ 175	£ 225	£ 250	£ 295	£ 325	£ 375	£ 425	£ 475

Size	Per metre	10 metre roll	50 metre roll
Roll Width (mm)	1200mm	1200mm	1200mm
Anti-Glare Film	£ 125	£ 875	£ 3,250

This product is designed for installation onto windows or LCD screens with a protective glass or acrylic fascia. Anti-glare film is also suitable for use on windows in conjunction with rear projection film.



## Anti-Glare Protective Glass Overlay

Ultra clear protective safety glass combined with our optical anti-glare coating

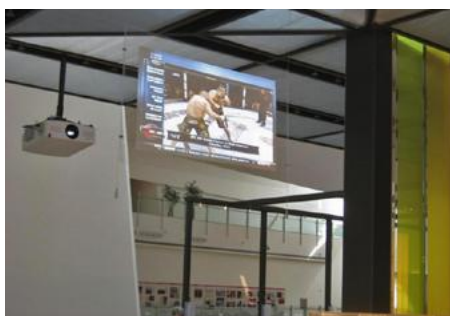
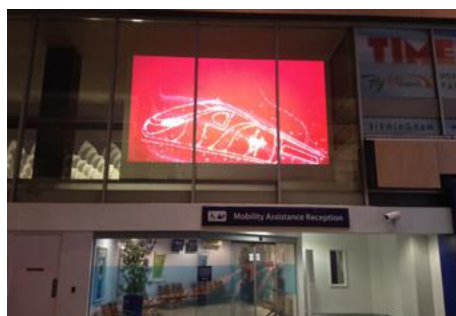
Standard screen sizes and custom panel sizes for projection screens, monitors & video walls.

- Ultra clear protective safety glass with optical anti-glare coating
- Minimises reflection and glare across the screen surface
- Can be easily fitted to any flat TV screen, commercial monitor or touchscreen
- Improves touchscreen performance by reducing friction and drag
- Anti-scratch, anti-graffiti and chemical resistant
- Smooth writing surface, durable and easy to clean
- Custom sizes available- please call for details



Diagonal (16:9)	32"	40" / 42"	46" / 47"	50" / 55"	60" / 65"	70" / 72"	80"	84" / 86"	92"/95"
Anti-Glare Glass Overlay	£ 175	£ 250	£ 295	£ 450	£ 625	£ 795	£ 895	£ 950	£ 995

Product	Details	Price
Velcro	Male and female velcro rolls (pair)	£ 30



## Mirrorvision Smart TV Screen



### Optical mirror glass screen with integrated smart TV

When the TV is switched on the enhanced HD quality images magically appear through the glass surface and when switched off the screen reverts back to a decorative mirror.



- Standard screen sizes 32"-43" (1080p HD) and 49"-75" (4K UHD)
- Other screen sizes & resolutions available
- 'Standard tint' or 'High Reflective tint' finish available\*
- Choose from a range of decorative frames (page 25) or frameless option
- Custom oversized or shaped mirrors available
- Incorporating only high quality TV brands



Diagonal (16:9)	32" (1080p HD)	43" (1080p HD)	49" (4K UHD)	55" (4K UHD)	65" (4K UHD)	75" (4K UHD)
Mirror TV (Frameless)	£ 950	£ 1,195	£ 1,675	£ 1,995	£ 2,650	£ 4,995
Mirror TV (Decorative Frame)	£ 1,075	£ 1,375	£ 1,925	£ 2,295	£ 2,995	£ 5,425

For the high reflective tint please add 20% to the prices.

## Mirrorvision Overlay



### Converts any existing TV or monitor into a mirrored screen

When the TV is switched on the enhanced HD / 4K quality images magically appear through the glass and when switched off the screen reverts back to a decorative mirror.



- Optical mirror glass overlays come complete with blacked-out borders and fixings
- Custom oversized and shaped mirrors available
- Simply fit over your own TV or monitor to create an optical mirror screen
- 'Standard tint' or 'High Reflective tint' finish available\*
- Choose from a range of decorative frames (page 25) or frameless option



Diagonal (16:9)	32"	40" / 43"	46" / 49"	50" / 55"	60" / 65"	70" / 75"	80" / 82"	84" / 86"
Mirror Overlay (Frameless)	£ 350	£ 450	£ 550	£ 695	£ 895	£ 1,195	£ 1,495	£ 1,795
Mirror Overlay (Decorative Frame)	£ 475	£ 675	£ 795	£ 995	£ 1,250	£ 1,625	£ 1,950	£ 2,250

Prices exclude toughening. Custom glass panel sizes are available up to 6mm thickness and 3150 x 1750mm size – please call for details.

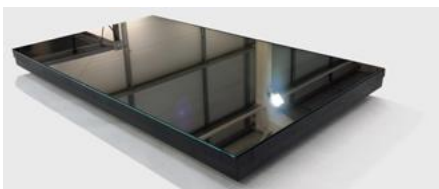
High reflective 4mm up to 70" & 86" high reflective available in 6mm. For the high reflective tint please add 20% to the prices.

## Professional Mirrorvision Display

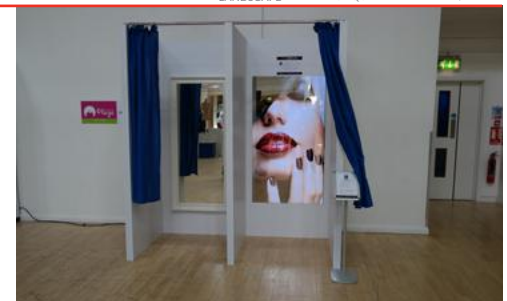


### Commercial grade displays for commercial applications

Professional Mirrorvision displays combining a high reflective mirror with a commercial grade HD / 4K screen.



- Ideal for retail stores & changing rooms
- 'High Reflective tint' finish included\*
- Standard screen sizes 32"-86" in 16:9 format
- Commercial grade HD / 4K screen for 24/7 use
- Content appears magically on screen, reverting back to a mirror when no content is displayed
- Portrait or landscape orientation



Diagonal (16:9 High Definition Screens)	32"	43"	50"	55"	65" (4K UHD)	70" (4K UHD)	86" (4K UHD)
Mirrored Display	£ 950	£ 1,195	£ 1,625	£ 1,995	£ 2,750	£ 4,250	£ 5,750
Interactive Mirrored Display (6 point IR multi-touch)	£ 1,425	£ 1,750	£ 2,250	£ 2,750	£ 3,650	£ 5,450	£ 7,450

## Mirrorvision Finishes

\*Our 'Standard tint' mirror is recommended for applications where optimum screen image quality is required, while 'High Reflective tint' is recommended for applications for optimum mirror effect.





## Mirrorvision Advertising Screen

### Mirrored advertising screens for both portrait or landscape applications

Commercial grade mirrored advertising screens with built-in media player (plug & play).

- Advertising content appears magically on screen, reverting back to a mirror when no content is displayed
- Slimline wall mountable screens in portrait or landscape
- Freestanding kiosk formats
- Built-in media player for HD quality images
- 'Standard tint' or 'High Reflective tint' finish available (See page 18 'Mirrorvision Finishes')
- Custom screen sizes and designs on request
- Optional WiFi / LAN module for remote media updates & scheduling - please call for details



Diagonal (16:9 High Definition Screens)	32"	43"	50"	55"
Slimline Mirror Advertising Screen (portrait or landscape)	£ 1,150	£ 1,495	£ 1,995	£ 2,495
Slimline Mirror Advertising Kiosk (portrait)	-	-	£ 3,750	-



## Mirrorvision Rear Projection Screen

### Ultra Black rear projection technology with optical mirror glass fascia

When the projector is switched on the enhanced high definition images magically appear through the glass surface and when switched off the screen reverts back to a decorative mirror.

#### Features

- Dual purpose screen
- Ultra Black rear projection film surface
- 'Standard tint' finish available (page 18 'Mirrorvision Finishes')
- Optional satin silver frame (page 24)
- Custom screen sizes and designs available on request

#### Typical Applications

- Reception displays
- Meeting rooms & boardrooms
- Hotels, bars & clubs
- Fashion stores & changing rooms
- Product launches & corporate events
- Museums & visitor attractions

Diagonal (16:9)	55"	65"	80"	92"	120"
Mirror Rear Projection Screen	£ 1,195	£ 1,495	£ 1,995	£ 2,495	£ 2,995

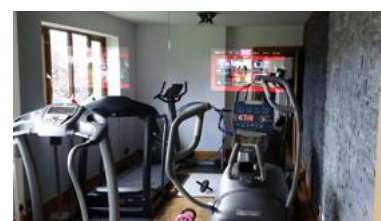


## Mirrorvision Video Wall

### Large format video wall display with a bespoke Mirrorvision glass overlay

Commercial grade video wall displays combined with our Mirrorvision glass overlays to create a sleek and stylish large format display. Interactive touch options available on request.

- Choice of video wall display sizes and formats
- Interactive option available
- Optical mirror glass overlays
- Coatings available for optimum image quality or optical mirror effect
- Content appears magically on the screen, reverting back to mirror when dark content / no content is displayed
- Landscape or portrait orientation



Example pricing below is based on popular formats of Mirrorvision Video Walls using 55" Video Wall Displays - custom sizes are available on request.

Product	1 x 3 (3 x 55" Tiles)	2 x 2 (4 x 55" Tiles)	3 x 2 (6 x 55" Tiles)	3 x 3 (9 x 55" Tiles)	4 x 3 (12 x 55" Tiles)
Mirrorvision Video Wall	£ 7,950	£ 10,495	£ 14,995	£ 22,750	£ 29,995

## Branded Digital Signage Kiosk



### Custom branded Digital Signage Kiosk with built-in media player

HD commercial grade portrait displays designed for 24/7 applications.

#### Features

- Stylish slimline design & portability
- Protective glass fascia & integral speakers
- Built-in media player (Android)
- Plug-n-Play USB file management
- Optional coloured fascia or full colour graphics
- Optional WIFI/LAN module

#### Typical Applications

- Hotels & reception areas
- Car showrooms & information points
- Travel agents & financial institutions
- Shops & shopping centres
- Airports, bus & rail stations
- Museums & visitor attractions



#### Product

	Price
49" Digital Signage Kiosk (Integrated Media Player) - with custom graphics / corporate branding	£ 2,750
49" Mirrorvision Kiosk (Integrated Media Player) - with Mirror Glass finish	£ 3,750

## High Brightness Screen



### Sun-readable screens ideal for store windows displays

Commercial grade high brightness HD displays for 24/7 applications.

#### Features

- 1500 nits brightness for sun-readable applications
- High contrast screen with wide viewing angles
- Built-in media player with scheduling software
- Portrait or landscape orientation
- Optional thru-glass touchscreen fascia
- Optional WIFI/LAN module

#### Typical Applications

- Window advertising screens
- Digital signage displays
- Video & advertising screens
- Retail stores & shopping centres
- Airports, bus & rail stations
- Museums & visitor attractions



Diagonal (16:9)	32"	43"	49"	55"	65"
High Brightness Screen	£ 1,350	£ 1,950	£ 2,250	£ 2,875	£ 3,995
Optional Wall Mount	£ 25	£ 25	£ 25	£ 50	£ 50

## IP65 High Brightness Outdoor Screen



### IP65 rated sun readable screens for outdoor use

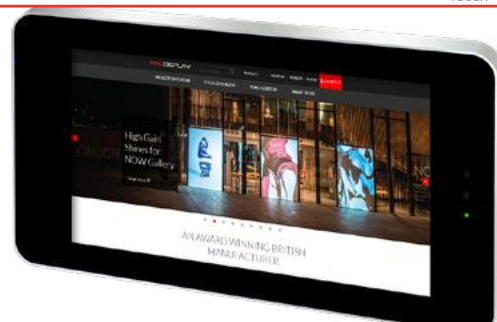
Commercial grade high brightness HD displays for 24/7 outdoor applications.

#### Features

- 2500 nits brightness for sun-readable applications
- IP65 fully protected enclosure
- Wall mountable screens or freestanding kiosks
- Built-in media player with scheduling software
- Portrait or landscape orientation (wall mount)
- Coloured fascias, custom graphics and logos available

#### Typical Applications

- Outdoor video & advertising screens
- Digital signage displays
- Airports, bus & rail stations
- Outdoor events & visitor attractions
- Sports stadiums & arenas
- Public spaces & shopping centres



Diagonal (16:9)	32"	43"	49"	55"	65"	75"	86"
Outdoor Wallmount Screen (Includes wall mount bracket)	£ 2,250	£ 2,995	£ 3,995	£ 5,450	£ 7,250	£ 12,495	£ 15,750
Outdoor Advertising Kiosk	-	£ 4,950	£ 5,450	£ 6,995	£ 8,495	£ 15,750	£ 18,995





## Transparent OLED Screen



### Self-lit Transparent OLED display with tempered glass protection

HD Transparent display with OLED technology, high contrast ratio and no enclosure necessary.

#### Features

- 55" HD High Transparency Screen
- Aspect Ratio - 16:9
- Interactive Options Available
- Native Resolution - 1920 x 1080 (FHD)
- Orientation - Landscape & Portrait
- Multiple AV Inputs

#### Typical Applications

- Luxury retail & jewellery stores
- Hotels, restaurants & cafes
- Nightclubs & bars
- Hair & beauty salons
- Museums & visitor attractions
- Health clubs

Product	Price
55" Transparent OLED Panel - with bonded glass fascia, free standing base & controller	£ 14,995
55" Transparent OLED Panel - with touch capabilities, free standing base & controller	£ 16,795
Cover Housing for Base	£ 1,285
Flight Case	£ 995



## Transparent LCD Screen



### Transparent LCD screens for shopfitting and integration

Transparent HD / 4K displays for 24/7 continuous use.

#### Features

- Includes display, media board & cables
- Designed for integration into your own housing
- Transparent screen with wide viewing angles
- Portrait or landscape orientation
- Custom sizes & multi-touch option
- Bespoke display cases available - please call

#### Typical Applications

- Integration into display furniture
- Integration into appliances/vending
- Store window displays
- POS/POP displays
- Trade shows & product launches
- Museums & visitor attractions

Diagonal (16:9)	23"	32"	43"	49"	55"	65" 4K	70"	86" 4K	98" 4K
Transparent LCD	£ 995	£ 1,450	£ 1,750	£ 2,250	£ 3,250	£ 4,950	£ 6,950	£ 11,950	£ 22,450
Interactive Transparent LCD with clear protective glass fascia (multi-touch)	£ 1,425	£ 1,950	£ 2,350	£ 2,995	£ 4,125	£ 5,995	£ 8,750	£ 14,250	£ 24,995
LED Lighting Kit / Transformer	£ 150	£ 195	£ 250	£ 295	£ 350	£ 450	£ 575	£ 695	£ 750

Transparent LCD Screens for video wall applications & smaller sizes available- please call for details.



## Transparent LCD Display Case



### Custom housings for our range of Transparent LCD screens

We can manufacture bespoke housing's for our range of transparent LCD screens, which includes display cases, counters, POS displays, exhibition stands, furniture and cabinets. Other solutions include incorporating transparent displays into fridges, appliances and vending machines.

#### Features

- Full integration into bespoke housings & furniture
- Custom designs and finishes
- Includes transparent display, media board & cables
- Screen sizes range from 23" to 98" diagonal
- Transparent HD 1080p and 4K UHD displays
- Portrait or landscape orientation

#### Typical Applications

- Exhibitions & trade shows
- Retail POS & POP displays
- Product launches & events
- Integration into appliances & vending machines
- Museums & visitor attractions
- Attention grabbing digital signage screen

Diagonal (16:9)	23"	32"	43"	49"	55"	65" 4K	70"	86" 4K	98" 4K
Standard Transparent LCD Display Cases - White	£ 2,350	£ 2,950	£ 3,950	£ 4,750	£ 5,950	£ 7,950	£ 13,950	£ 18,950	£ 29,995
Multi-Touch Interactive Transparent Display Cases	£ 2,950	£ 3,500	£ 4,750	£ 5,750	£ 7,250	£ 9,450	£ 15,750	£ 21,450	£ 32,750

Fridges / coolers, bespoke display boxes and custom colours / graphics are available upon request.

## Indoor SMD LED Screen

### Modular full colour LED screens for indoor applications

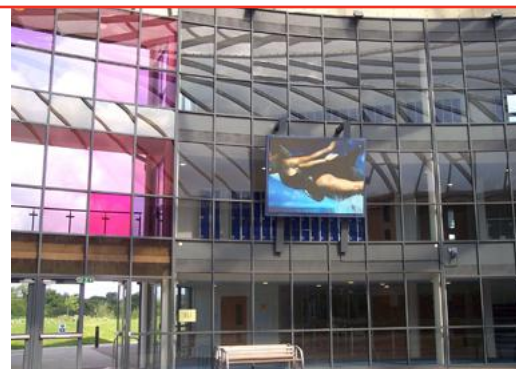
High brightness, full colour surface-mount LED screens for large format indoor video displays.

#### Features

- Pixel pitch (resolution) from 0.9mm to 10mm
- Premium grade surface mount (SMD) LEDs
- Highest quality components within the industry
- Superior resolution and wider viewing angles than DIP LED screens
- (CE & UL approved) 2 year comprehensive warranty
- Prices include modular LED screen, control system and basic operating software

#### Typical Applications

- Stadiums & arenas
- Exhibitions & conferences
- Schools & universities
- Shopping centres & malls
- Airports, bus & rail stations
- Museums & visitor attractions



Pixel pitch (resolution)	0.9mm	1.5mm	2.5mm	3.5mm	4mm	6mm	8mm	10mm
Indoor SMD LED								Please call for current prices

## Outdoor LED Screen

### Modular full colour DIP and SMD LED screens for outdoor applications

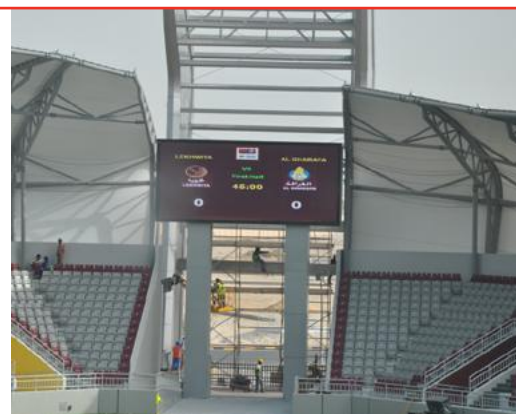
High brightness, full colour LED screens for large format outdoor video displays.

#### Features

- Pixel pitch (resolution) from 4mm to 50mm
- Premium grade DIP & surface mount (SMD) LEDs
- Highest quality components within the industry
- Superior brightness and wider viewing angles
- IP65 (CE & UL approved) & 2 year comprehensive warranty
- Prices include modular LED screen, control system and basic operating software

#### Typical Applications

- Outdoor stadiums & arenas
- Outdoor billboards & advertising
- Concerts & outdoor events
- Shopping centres & malls
- Airports, bus & rail stations
- Public areas & visitor attractions



Pixel pitch (resolution)	4mm	6mm	8mm	10mm	12mm
Outdoor SMD LED					Please call for current prices

Pixel pitch (resolution)	10mm	12mm	20mm	25mm	50mm
Outdoor DIP LED					Please call for current prices

## LED Perimeter Advertising System

### Full colour indoor and outdoor LED perimeter advertising systems

High brightness, full colour LED systems for concert venues, arenas and sports stadiums.

#### Features

- Standard pixel pitch (resolution) 10mm, 12mm or 16mm
- Premium grade DIP & surface mount (SMD) LEDs
- Highest quality components within the industry
- Superior brightness and wider viewing angles
- IP65 (CE & UL approved) & 2 year comprehensive warranty
- Prices include modular LED screen, control system and basic operating software

#### Typical Applications

- Sports stadiums & arenas
- Outdoor billboards & advertising
- Concert venues & outdoor events
- Exhibition & conference halls
- Motor & horse racing circuits
- Leisure facilities & visitor attractions

**NB – higher resolution modules and scoreboard formats available**



Pixel pitch (resolution)	10mm	12mm	16mm
SMD & DIP LED Perimeter Module			Please call for current prices
DIP LED Scoreboards			Please call for current prices

Please note, LED component costs often fluctuate due to exchange rate changes and prevailing market supply conditions. We always ask you to call us for current prices.

Please see page 23 for Transparent LED Screen pricing.



## Transparent LED Screen



Transform your windows or glass facades into a dynamic video advertising screen

A transparent retrofit solution that fits in behind any window or glass wall to create an amazing video screen without blocking the view. The smart holo-effect LED display provides a minimalist solution with a modular design that will work in any environment.

### Features

- Module sizes 500x500mm or 1000x500mm
- Pixel Pitch 3.9x7.8mm and 7.8x7.8mm
- Transparency up to 85%
- Brightness - 5000 cd/m²
- Viewing angle 160 °
- Software & control system included

### Typical Applications

- Windows, glass walls & facades
- Corporate buildings & offices
- Retail stores & shopping centres
- Stadiums & arenas
- Hotels & Airports
- Car showrooms

Pixel Pitch (Resolution)

3.9 x 7.8mm

7.8 x 7.8mm

Transparent LED Display (Cost per m2)

POA

POA

## LED Video Sign



LED digital advertising screen with static graphic sign

Merging LED digital signage with traditional signage, a range of sizes and pixel pitch resolutions are available or bespoke options to suit custom requirements.

### Features

- Pixel pitch (resolution) for Outdoor 4mm to 50mm
- Pixel pitch (resolution) for Indoor 0.9mm to 10mm
- Highest quality components within the industry
- Prices include modular LED screen, basic control software, spare parts and static graphic sign
- Superior brightness and wide viewing angles

### Typical Applications

- Showrooms
- Shopping centres and storefronts
- Public Areas & visitor attractions
- Schools & universities
- Visitor Attractions
- Car Showrooms

Product

Price

LED Video Signs

POA

## Mirrorvision LED Wall



Large format Mirror LED Wall

Mirrored LED Walls manufactured using Modular LED Tiles to create custom display sizes.

### Features

- Optical Mirrorvision technology
- Pixel pitch (resolution) from 0.9mm to 3.9mm
- Interactive options available
- Coatings available for optimum image quality or mirror effect
- Content appears magically on the screen, reverting back to mirror when no content or black content is displayed
- Landscape or portrait orientation

### Typical Applications

- Retail stores
- Shopping centres & malls
- Corporate offices
- Reception displays
- Airports
- Museum & visitor attractions

Product

Price

Mirrorvision LED Video Walls

POA

## Soundpod

Turns any surface into a loudspeaker – including glass

A small, unobtrusive and easy to install audio transducer, creating the ultimate invisible sound source.

### Features

- Suitable for any rigid surface – wood, glass, acrylic, plasterboard & MDF
- Max. power: 20 watts RMS
- Impedance: 8 ohms
- Frequency range: 100Hz - 15KHz
- Size: 51 x 22mm & weight: 152 grams
- Complete with fixing kit & cables
- Amplifiers available (page 25)

### Typical Applications

- Invisible non-directional sound source
- Window displays
- Offices & meeting rooms
- Retail stores & POS displays
- Furniture & display cases
- Museums & visitor attractions
- In-Wall speakers



Product	Price
Soundpod (each)	£ 65
Package: Pair of Soundpods and amplifier (Bluetooth compatible)	£ 275

## Art Speaker

Slimline canvas art wall speakers with surface sound speaker technology

Hide your loudspeakers behind your favourite artwork.

### Features

- Slimline canvas art wall speaker
- Invisible non-directional sound source
- Choose from a range of artwork or your own design
- Maximum power: 40 watts RMS (each speaker)
- Impedance: 8 ohms
- Custom shapes & sizes available

### Typical Applications

- Receptions & waiting rooms
- Boardrooms & meeting rooms
- Hotels, bars & restaurants
- Retail stores & showrooms
- Public lounges & art galleries
- Homes & interiors



Art Speaker	Single	Pair
600mm x 200mm	£ 375	£ 595
350mm x 350mm	£ 375	£ 595
815mm x 375mm	£ 475	£ 795
600mm x 600mm	£ 475	£ 795

Sold as a single speaker, pairs or sets with the option of blank units without the speaker.

## Screen Solutions With Surface Sound

Turn your projection screen into a loudspeaker

Create the ultimate front or rear projection screen by adding our surface sound technology.

### Features

- Invisible non-directional sound source
- Combined with our range of rigid projection screens
- Maximum power output 40–80 watts RMS
- Impedance: 8 ohms
- Frequency range: 100Hz to 15KHz
- Custom graphics available

### Typical Applications

- Digital signage screens
- Information displays
- Retail stores & POS displays
- Shopping centres & malls
- Exhibitions & conferences
- Museums & visitor attractions

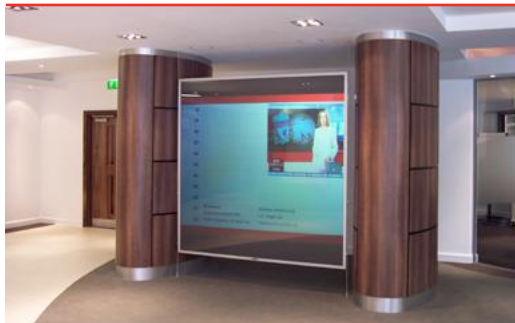


For standard front projection screens with surface sound see – 'Soundvision Screens' on page 13.

For more information about rear projection screens with surface sound – please call for details.



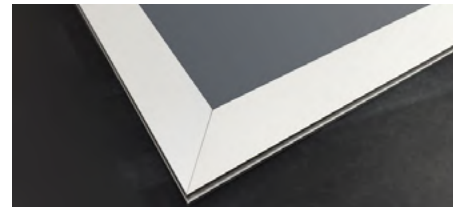
## Projection Screen Frames



Frames to mount or suspend our range of rigid projection screens

Aluminium frames in a choice of finishes.

- Suitable for rigid front and rear projection screens
- Screen thickness 3–6mm
- Recommended for acrylic screens above 92"
- Choice of colours & styles
- Custom sizes available on request
- 19mm depth x 45mm width



Diagonal (16:9)	42"	55"	65"	72"	80"–84"	92"–100"	120"	134"	Up to 3 x 2m
Satin Silver Metal Frames	£ 150	£ 195	£ 250	£ 295	£ 350	£ 425	£ 535	£ 650	£ 725
Satin Black Metal Frames	£ 195	£ 250	£ 295	£ 350	£ 395	£ 475	£ 575	£ 725	£ 795
Decorative Wooden Frames	£ 195	£ 250	£ 295	£ 350	£ 395	£ 475	£ 575	£ 725	£ 795

## Extrusion Bars



Satin silver aluminium support bars for acrylic projection screens

A minimalist method of supporting and protecting acrylic screens from bowing.

- Designed for our 3mm acrylic rear projection screens
- Use in conjunction with cable suspension systems
- Recommended for acrylic screens 55" – 92"
- Custom sizes available on request

\*Not recommended for screens over 92"

Diagonal (16:9)	55"	65"	80"–84"	92"–100"
Extrusion Bars	£ 95	£ 125	£ 150	£ 175

## Screen Fixings & Installation Kits



Safe and strong mounts & fixings for your projection screen

High quality fixings designed to position your screen accurately and securely.

- Choice of tension or weighted cable suspension systems
- Thicker cable fixing systems are recommended for larger format screens 92" and above
- Designed for 3–6mm acrylic projection screens
- Support clips to fix acrylic screens to cables
- Wall mount screen studs – suitable for aluminium frames
- Custom fixing kits and accessories are available on request
- Installation kit for self-adhesive optical films

Accessory	Description	Diameter	Price
Tension suspension system	Satin silver floor to ceiling suspension system including 2 tension cables and 4 screen support clips	1.5mm	£ 40
		3.0mm	£ 65
Weighted suspension system*	Satin silver weighted suspension system including 2 weighted cables and 4 screen support clips	1.5mm	£ 75
		3.0mm	£ 95
Teardrop suspension system	Per Cable		£ 75
Wall mount studs	Satin silver wall mount studs; Per stud		£ 10
Screen support clips	30"–55" screens require 4 clips minimum; 65"–92" screens require 8 clips minimum; Per clip		£ 4
Installation kit for optical films	Spray bottle, soft edge squeegee, nitrile handling gloves		£ 15
Sunscreen Tape	Black foam adhesive tape rolls		£ 20
Velcro	Male and female velcro rolls (pair)		£ 30

\*3mm cable fixing systems are recommended for larger format screens 92" and above – please call for details.

## Display Stands for Projection Screens

Freestanding and portable stands for rigid front and rear projection screens

Strong and lightweight designs for both commercial and rental applications.

- Suitable for rigid projection screens 3mm to 6mm thick
- Helps to protect and position your projection screen
- POS stand requires a cable suspension system & extrusion bars
- Portable stand requires satin silver frame (available separately)
- Custom sizes available on request



Diagonal (16:9)	32"-55"	65"-100"	120"-134"
Satin Silver POS Stand (Cable System / Extrusion bars extra - see page 25)	£ 995	£ 1,295	-
Satin Silver Portable Stand (As pictured above)	£ 795	£ 995	£ 1,195

## Surface Sound Products

Range of accessories for Soundvision 3D and Soundpods



Soundvision screens and Soundpods require an amplified sound source either from a media player, DVD/CD or PC.

Soundpods come complete with mounting disc, speaker cables and window decal.



Screen accessories	Price
Portable floor stand / castors for 60"-92" Soundvision 3D screen	£ 350
Portable floor stand / castors for 100"-130" Soundvision 3D screen	£ 495
Standard wall mount fixing / adjuster	£ 125
Tiltable ceiling mount bracket / fixings	£ 395
Rechargeable 3D active glasses	£ 75
30 watt mixer amplifier - MIC input	£ 150
120 watt mixer amplifier - MIC input	£ 295

## Screen Sample Packs & Demonstration Kits

We offer a range of screen sample packs and demo kits



For a complete list of items included in the dealer demo kit or to customise your own screen sample kit - please call our sales team.

Additional product discounts are available for resellers who wish to invest in dealer / distributor demo kits or stock.



Packs & Kits	Price
Projection sample pack - includes A4 samples of our range of projection screens and films	£ 50
Switchable film sample pack - includes A4 self-adhesive switchable film, switch and transformer	£ 50
Switchable Glass and Film Sample Pack	£ 150
Mirrorvision glass - A4 sample of 4mm mirrored TV glass	£ 25
Dealer demo kit - our range of projection screens, switchable smart glass solutions and interactive multi-touch technologies	£ 4,995



## Transparent LCD Screen



Nike opened its largest 'House of Innovation' yet in Paris, France, the 3rd of Nikes specialist flagship stores stands in a prime location on the prestigious avenue des Champs-Élysées, measuring 2,400sqm with the latest and greatest in Nike innovation spreading over 4 floors. Pro Display were contacted by Nike, who were looking to use a Transparent Screen in a digital way-finding solution for use throughout their newest and largest House of Innovation yet. They provided us with the initial concept for the display, which had been rendered by their design team, so we could begin working together to accommodate the practicalities of using a Transparent LCD for the application. We knew our final product had to integrate seamlessly into the design and the result was a sleek and minimalist set of nine Transparent LCD Display Screens, custom built to suit the applications requirements which brought the Nike team's concept ideas to life.

## Nike 'House of Innovation'

## Clearview Rear Projection Film



This was part of an Emmy award winning stage-managed performance for the 83rd Academy Awards that utilised Pro Display's Clearview Holographic Projection Screen Technology, providing a versatile transparent canvas on which the dedicated Art Department could create their show without projection screens blocking any visuals. The stage set included 38 Clearview screens, with one very special screen reserved for the posthumous reappearance of comedy legend Bob Hope, returning to deliver the same speech he gave from the first televised Oscars. In this memorable, revolutionary use of Holographic effect technology, Billy Crystal was called on to introduce the digital projection of Bob Hope from his landmark TV broadcast to once again grace the stage with his presence as if he was really there. Pro Display subsequently won the 'Live Event of the Year' category at the AV Awards for the part we played in this project.

## The Oscars

## Projection Mapping Film



Pro Display took on a ground-breaking project in partnership with Integrated Systems Europe to bring the nhow Amsterdam RAI hotel to life. We supplied them with 392 pieces of our Projection Mapping Film, installed across 25 storeys of the hotel's incredible glass façade. Throughout ISE 2019 our film was used as a canvas to advertise exhibition highlights and the mind bending potential of projection mapping technology.

Mike Blackman, Founder of ISE was thrilled with the success of the install saying: "For the duration of the exhibition, attendees were treated to a daily showcase of projection mapping imagery that made use of the building's unique profile. This was interwoven with constantly updated exhibition highlights and previews, projected onto two stories of the new hotel. It literally stopped the traffic! [...] We really appreciated the dedication and skills shown by all of our partners - as did over 80,000 attendees at ISE 2019!"

## NHow Hotel at ISE 2019

## Self-Adhesive Switchable Film



The windows of Harrods, the world's most luxurious retail store were fitted with Switchable Smart Film, projected onto with a tension-building countdown every three minutes, then turned from frosted to clear to reveal the new Rolls Royce Drophead Coupé. Physically creating a 'new Dawn' for people to watch in one of the most exclusive advertising spaces in the world, Intelligent Glass worked with partners JUSTSO to intrigue passers-by, building anticipation of the big reveal. Four large sheets of Switchable Smart Film were precision cut to the dimensions of the windows at Harrods, covering an area of more than 10m<sup>2</sup>. Crowds gathered regularly outside the window as the countdown ended, watching the window turn from frosted to clear, revealing the brand new Rolls Royce Dawn that was behind. Then the windows reverted back to frosted, were darkened and the countdown to another 'new Dawn' began.

## Rolls Royce Dawn Launch, Harrods

## Digital Glass



The Middle East's largest Rigid Rear Projection Screen currently resides at Level Shoes in The Dubai Mall in the form of Pro Display's Digital Glass UST Rear Projection Screen. Seeking a single screen solution for their luxury shoe store, Level Shoes, The Chalhoub Group wanted to display high quality content without the usual join lines that are found on traditional Video Walls. Offering a solution that requires a fraction of the cost to run compared to an LCD Video Wall, this screen offered Level Shoes a high quality and superior alternative to Video Walls that boasts excellent image reproduction and UST compatibility. Along with an Epson ED-L1405U projector, this projection system provided powerful, uncompromising images that stood out even in one of the most luxurious retail environments in the world. Pro Display worked with partners Eclipse Installations and Epson to deliver this amazing project, resulting in a successful and effective display that everyone involved can take pride in.

## Dubai Mall



Intelligent Glass is a division of Pro Display, a business born to innovate, changing the face of visual display as we know it today. A British manufacturer which has been designing and developing its own range of patented smart glass technologies for over a decade. These products are based on a polymer dispersed liquid crystal technology, which with a simple ON-OFF mode switches the glass from being clear (transparent) to frosted (opaque). In its frosted state the film acts as an electronic blind providing privacy and security for any glass, window or partition. This unique glass technology can also be used as a high definition projection screen to display corporate presentations, TV images and videos.

### Single Glazed Switchable Glass

Single glazed switchable glass tends to be our most popular option worldwide, offering a cost effective solution where the liquid crystal switchable layer is coated down directly onto the glass surface. This glass is ideal for both privacy and projection applications where multiple panels can be joined together to create a large format video wall solution.

### Laminated Switchable Glass

Laminated switchable glass is where the switchable layer is bonded between two sheets of glass, which makes it a safer option for both high traffic areas and wet areas e.g. bathrooms, hospitals, clean rooms etc. This durable solid state technology replaces the need for old fashioned blinds or curtains offering greater control and comfort within any room.

### Double / Triple Glazed Switchable Glass

Double / triple glazed switchable glass utilises a warm edge spacer bar with an argon filled air gap in between to offer greater insulation and performance. Depending upon the customer requirements we offer a variety of glass options e.g. low iron, low E coatings to provide the most efficient DGU/IGU panels on the market today.

### Self-Adhesive Switchable Film

Self adhesive switchable film is designed specifically to retrofit to existing glass or other transparent surfaces, it provides a simple and cost effective alternative to other switchable smart glass technologies. It is manufactured with a self-adhesive cling layer on one side (peel and stick) which makes it easy to apply to both new and existing glass (no specialist installation equipment required). This film is ideal for both privacy and projection applications where multiple panels can be joined together to create a large format video wall solution.

### Vision Panel Door System

Vision panel door systems are the very latest innovation from Intelligent Glass, allowing discreet visibility into (or out of) a room at the push of a button. Powered by a replaceable AA battery pack, concealed within the door, our switchable vision panels work independently of mains power. This gives excellent flexibility and little or no disruption during installation.

Our switchable smart glass products are also available in a range of tints/colours.

### Typical Applications

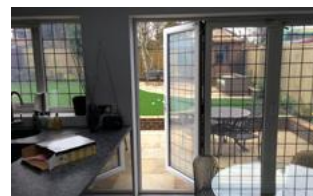
#### Office



#### Corporate



#### Residential



#### Hospitality



#### Healthcare



#### Leisure



Other typical applications include – furniture, display cases & cabinets, transportation, motor yachts, hotels, theatres, shopping centres, product launches & live events, visitor attractions and much more.

Designers and architects specify Intelligent Glass for some of the world's leading brands:





## Single Glazed Switchable Smart Glass



Toughened glass coated with our optical switchable smart film layer

The switchable optical layer is factory-coated using UV light to any thickness of glass. Our most cost effective Smart Glass technology and suitable for video projection.

- Standard glass thicknesses from 6mm - 15mm
- Multiple panels can be joined to create glass walls & partitions
- Operating power 50/110VAC, frequency 50/60Hz
- Power used 7 watts & current 0.1 amperes per m<sup>2</sup>



Glass Width	up to 200mm	up to 300mm	up to 400mm	up to 500mm	up to 600mm	up to 700mm	up to 1000mm	up to 1200mm	up to 1500mm	up to 1800mm
Customer's own glass	£ 115	£ 165	£ 215	£ 260	£ 299	£ 350	£ 395	£ 475	£ 595	£ 785
6mm (price per linear metre)	£ 120	£ 170	£ 220	£ 265	£ 315	£ 365	£ 415	£ 499	£ 625	£ 825
10mm (price per linear metre)	£ 125	£ 175	£ 225	£ 275	£ 325	£ 375	£ 425	£ 515	£ 650	£ 850
12mm (price per linear metre)	£ 135	£ 185	£ 240	£ 295	£ 350	£ 399	£ 450	£ 550	£ 695	£ 899
15mm (price per linear metre)	£ 150	£ 199	£ 265	£ 320	£ 385	£ 435	£ 485	£ 585	£ 750	£ 975

## Laminate Switchable Smart Glass



Laminated glass incorporating our switchable smart glass technology

Laminated safety glass is ideal for high traffic areas, bathrooms, hospitals and suitable for video projection.

- Standard glass thicknesses 12mm and 14mm
- Multiple panels can be joined to create glass walls & partitions
- Operating power 50/110VAC, frequency 50/60Hz
- Power used 7 watts & current 0.1 amperes per m<sup>2</sup>



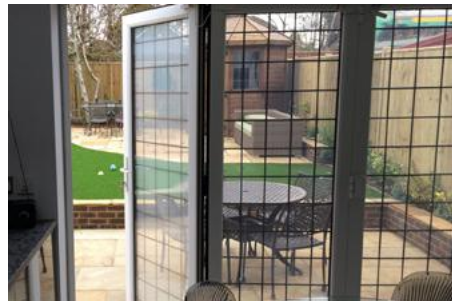
Glass width	up to 200mm	up to 300mm	up to 400mm	up to 500mm	up to 600mm	up to 700mm	up to 1000mm	up to 1200mm	up to 1500mm	up to 1800mm
Standard Laminate (price per linear metre)	£ 165	£ 225	£ 285	£ 335	£ 399	£ 450	£ 499	£ 599	£ 765	£ 995
Coloured Laminate (price per linear metre)	£ 199	£ 275	£ 350	£ 415	£ 485	£ 540	£ 599	£ 725	£ 915	£ 1,275



## Double Glazed Switchable Smart Glass

### Insulated glazing incorporating switchable smart glass technology

Energy efficient Double Glazed Units (DGU) with integral switchable film layer Ideal for both external and internal windows for commercial building and homes.



- Thickness of sealed units from 18mm
- Maximum single unit size 1800 x 4000mm
- Energy efficient sealed units (Argon filled)
- Operating power 50/110VAC, frequency 50/60Hz
- Power used 7 watts & current 0.1 amperes per m<sup>2</sup>
- Custom panel sizes made to order
- Specialist glass available - please call for details
- Widths up to 1800mm available by special order
- Different specification of insulated glass units including triple glazing is available - please call for details



Glass Width	up to 200mm	up to 300mm	up to 400mm	up to 500mm	up to 600mm	up to 700mm	up to 1000mm	up to 1200mm	up to 1500mm	up to 1800mm
Double Glazed Units (price per linear metre)*	£ 215	£ 295	£ 365	£ 435	£ 499	£ 550	£ 599	£ 725	£ 915	£ 1,275

\* Unit construction: 6.4mm laminate + warm-edge spacer + argon + 6mm toughened.

A low E glass option is available for External Units - for costs, please add +7.5% to the above prices.

## Switchable Smart Film

### Self-adhesive switchable smart film

Intelligent Glass switchable smart film for retrofit applications on windows and internal glazing.



- Self adhesive film - thickness 0.75mm
- Cling liner with no permanent adhesives - simply peel back and stick to a flat transparent surface
- Multiple pieces can be joined on glass walls & partitions
- Operating power 50/110VAC, frequency 50/60Hz
- Power used 7 watts & current 0.1 amperes per m<sup>2</sup>
- Custom film sizes made to order
- Hole cutting is available - please call for details



Glass width	up to 200mm	up to 300mm	up to 400mm	up to 500mm	up to 600mm	up to 700mm	up to 1000mm	up to 1200mm	up to 1500mm
Switchable Film (price per linear metre)	£ 105	£ 125	£ 165	£ 195	£ 225	£ 275	£ 299	£ 365	£ 475

## Switchable Smart Glass Vision Panel

### Smart glass vision panels for commercial & domestic doors

Battery powered switchable vision panels for integration into doors & partition walls.



- Fire rated switchable vision panel system
- Battery powered, no mains required
- Push button switch & low battery indicator
- Low maintenance with 2-year battery life
- Installed at manufacture or retrofit kits
- Custom panel sizes & shapes made to order

Prices from £295.

Please call our sales team for more information.







## Switchable Smart Glass Projection Wall



### Switchable smart glass walls for video projection applications

Turns instantly from a clear glass wall into an HD / 4K projection surface at the flick of a switch.

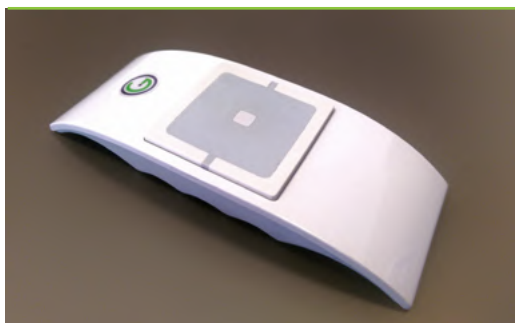
- Ultra clear switchable glass wall (50/110VAC)
- Maximum glass panel size: 6000 x 1800mm
- Multiple panels are positioned side by side to create a HD / 4K video projection wall
- HD / 4K projection when frosted & holo effect when clear
- For transformer and RF remote control pricing please see below 'Switchable Smart Glass Accessories'



Glass width	up to 500mm	up to 1000mm	up to 1200mm	up to 1500mm	up to 1800mm
Switchable Rear Projection Panel - 6mm glass (price per linear metre)	£ 385	£ 685	£ 720	£ 895	POA
Switchable Rear Projection Panel - 10mm glass (price per linear metre)	£ 395	£ 595	£ 735	£ 925	POA
Switchable Rear Projection Panel - 12mm glass (price per linear metre)	£ 415	£ 625	£ 765	£ 975	POA
Switchable Rear Projection Panel - 15mm glass (price per linear metre)	£ 450	£ 670	£ 795	£ 1,025	POA

Optional front / dual projection panels are available and can be used only as an effects screen rather than a normal presentation screen and requires the projectors to be placed off axis – please call our sales team for prices. Typical applications: exhibitions, corporate events, product launches, theatres, visitor attractions.

## Switchable Smart Glass Accessories



### Switchable smart glass accessories

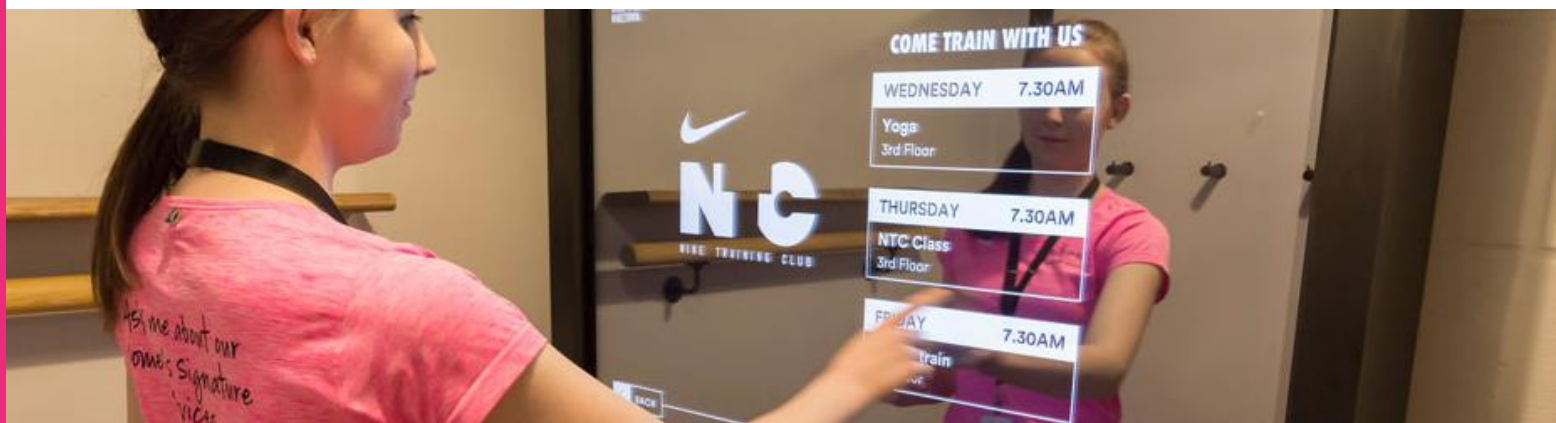
Complete range of accessories to complement our Switchable Smart Glass products.

- Product warranties are voided by using 3rd party transformers
- Transformer rating: 20VA per m<sup>2</sup>
- Transformers to be installed within 10 metres of the smart glass or smart film
- Only use Pro Display specialist sealant
- For cleaning we strongly recommend IPA wipes



Accessories	Price
Transformer (VA rating and number of transformers depends on square metres of smart glass being powered – call for details)	from £ 35
RF Remote Control & Receiver (multiple channel remotes available to operate several glass panels or partitions – call for details)	from £ 150
Additional Receiver	£ 95
Wall Plates (black, white or silver)	£ 10
Specialist Sealant (1x Tube)	£ 17
Switchable Film Installation Kit (5 pairs of nitrile gloves, hard rubber roller & soft-edge squeegee)	£ 35
Switchable Film Sample Pack – includes A4 self-adhesive film, switch and transformer	£ 50
Switchable Glass & Film Sample Pack – includes A4 smart glass and self-adhesive film, switch and transformer	£ 150





Intouch is Pro Display's official touch screen brand with the focus on providing a cost effective range of interactive products and solutions, with a marketing campaign based on Be smart...Get intouch.

Pro Display has been designing and developing its own range of touch screen technologies for more than 7 years. These products are based on two specific technologies – Projected Capacitive (PCAP) and Infrared (IR).

## Projected Capacitive Touch Technology

Projected capacitive touch technology works by accurately detecting and locating touch, sensing peak change in frequency.

When a user touches the screen, capacitance occurs between the finger and the sensor grid, whereupon the sensor's electromagnetic field is disrupted. The peak change in frequency is measured, and by determining which row and column is closest to this peak change in frequency, the position of the user's touch can be very accurately determined.

This product is available as either a flexible foil or rigid glass panel and is ideally suited to through glass touch applications which includes outdoor kiosks, touch tables and advertising/information displays in store windows. We offer both single/dual touch and multi-touch solutions (up to 40 touch points).

Products include – Interactive rear projection foils, clear interactive foils, interactive glass overlays, interactive mirrors, interactive tables, outdoor kiosks and high brightness touch screens.

## Infrared Touch Technology

Infrared touch overlays are embedded in a frame around the display and emit vertical and horizontal rows of infrared LEDs and sensors.

The infrared light in the overlay creates an invisible grid of infrared beams and sensors detect touch when the plane of the grid is broken by a finger touch or other solid object such as a pen/stylus.

Infrared touch technology is more economical and scalable than projected capacitance, allowing us to create large format touch screen solutions. Another major feature is that it works with any type of display technology and does not compromise the image quality of the screen.

This multi-touch technology is available as 6, 12 and 32 point touch and offers excellent touch accuracy and fast response times making it ideal for high resolution displays. Designed for internal applications on kiosks, monitors, video walls, projection screens & whiteboards.

Products include – Retrofit interactive frames, multi-touch projection screens, large format rear projection screens, touch screen monitors, interactive whiteboards, transparent LCD touch screens, mirrored interactive displays, interactive glass overlays and interactive kiosks.

## Typical Applications

### Digital Signage



### Kiosks



### Information



### Gaming



### Corporate



### Education



Resellers and integrators specify intouch solutions for some of the world's leading brands:



Dior



BOSS  
HUGO BOSS

PHILIPS

Disney

sky SPORTS

SELFRIDGES & CO



## Single / Dual Touch Projection Foils



Through glass interactive touch foils with a choice of rear projection surfaces (PCAP technology)

Transforms any glass/acrylic panel or store window into an interactive touch screen display.

- Premium quality single/dual touch foils (up to 2 touch points)
- Simple & quick to install – removable & reusable cling liner
- Single touch up to 20mm thick, dual touch up to 6mm thick
- High resolution controller (128 wire)
- Operating system: Windows & Linux
- Includes 1-year warranty and installation kit.



Diagonal (16:9)	32"	43"	48"	55"	65"	75"	82"
High Gain Foil	£ 695	£ 825	£ 995	£ 1,195	£ 1,495	£ 1,995	£ 2,495
Pro Diffusion Foil	£ 725	£ 850	£ 1,025	£ 1,235	£ 1,535	£ 2,075	£ 2,575
Clearview Foil	£ 750	£ 875	£ 1,075	£ 1,295	£ 1,625	£ 2,175	£ 2,675
Ultra Black Foil	£ 750	£ 875	£ 1,075	£ 1,295	£ 1,625	£ 2,175	£ 2,675
White UST Foil	£ 780	£ 920	£ 1,120	£ 1,340	£ 1,670	£ 2,265	£ 2,830
SunScreen Foil	£ 895	£ 1,075	£ 1,275	£ 1,625	£ 1,995	-	-

USB Cable & Earthing Cable

£ 40

Please allow an additional 100mm for the tail and USB controller board.



## Multi-Touch Projection Foils



Through glass interactive touch foils with a choice of rear projection surfaces (PCAP technology)

Transforms any glass/acrylic panel or store window into an interactive touch screen display.

- Premium quality multi-touch foils (up to 40 touch points)
- Simple & quick to install – removable & reusable cling liner
- Multi-touch function – glass up to 10mm thick
- High resolution controller (up to 256 wire)
- Operating system: Windows & Linux
- Includes 1-year warranty and installation kit.



Diagonal (16:9)	32"	43"	49"	55"	65"	75"	86"
High Gain Foil	£ 825	£ 1,075	£ 1,325	£ 1,625	£ 1,950	£ 2,750	£ 3,250
Pro Diffusion Foil	£ 850	£ 1,095	£ 1,350	£ 1,650	£ 1,995	£ 2,825	£ 3,325
Clearview Foil	£ 875	£ 1,135	£ 1,375	£ 1,725	£ 2,075	£ 2,950	£ 3,395
Ultra Black Foil	£ 875	£ 1,135	£ 1,375	£ 1,725	£ 2,075	£ 2,950	£ 3,395
White UST Foil	£ 895	£ 1,175	£ 1,425	£ 1,785	£ 2,125	£ 3,025	£ 3,575
SunScreen Foil	£ 1,025	£ 1,325	£ 1,575	£ 2,075	£ 2,450	-	-

USB Cable

£ 30

## Product Options

Additional dual projection screen options are available for the products on this page - please call for details.

Most standard sized foils and projection films are held in stock. For more information about our integrated projection films, please see pages 5 - 8.



## Single / Dual Touch Foil for LCD / LED Displays



Through glass interactive touch foils to work in conjunction with LCD/LED screens (PCAP technology)

Transforms any glass/acrylic panel or store window into an interactive touch screen display. Ideal for integration within POS displays, kiosks and window display solutions.



- Premium quality transparent single/dual touch foils (up to 2 touch points)
- Simple & quick to install – removable & reusable cling liner
- Single touch up to 20mm thick, dual touch up to 6mm thick
- High resolution controller (128 wire)
- Operating system: Windows & Linux
- Includes 1-year warranty and installation kit
- Most standard sizes held in stock



Diagonal (16:9)	27"	32"	43"	49"	55"	65"	75"	82"
Single / Dual Touch Foils for LCD / LED Screens	£ 395	£ 495	£ 595	£ 750	£ 950	£ 1,175	£ 1,495	£ 1,950

USB Cable & Earthing Cable

£ 40

## Multi-Touch Foil for LCD / LED Displays

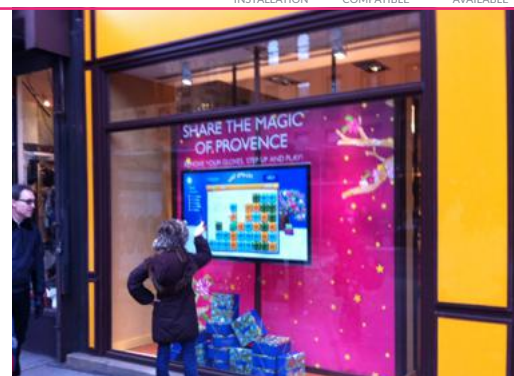


Through glass interactive touch foils to work in conjunction with LCD/LED screens (PCAP technology)

Transforms any glass/acrylic panel or store window into an interactive touch screen display. Ideal for integration within the gaming/vending industry, digital signage and table top applications.



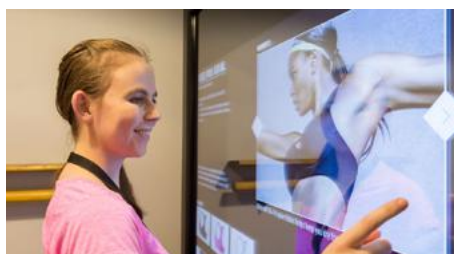
- Premium quality transparent multi-touch foils
- Simple & quick to install
- Multi touch function – glass up to 10mm thick
- High resolution controller
- Includes installation kit
- Most standard sizes held in stock



Diagonal (16:9)	32"	43"	49"	55"	65"	75"	86"
Multi-Touch Foils for LCD / LED Screens	£ 595	£ 850	£ 1,075	£ 1,250	£ 1,575	£ 2,250	£ 2,750

USB Cable

£ 30





## Single / Dual Touch Foil



Through glass interactive touch foils to work in conjunction with LCD/LED monitors (PCAP technology)

Transforms any glass/acrylic panel or store window into an interactive touch screen display. Ideal for integration within POS displays, kiosks and industrial grade applications.

- Premium quality transparent single/dual touch foils (up to 2 touch points)
- Choice of removable cling liner or PSA
- Single touch up to 20mm thick, dual touch up to 6mm thick
- High resolution controller
- Operating system: Windows & Linux
- Includes 1-year warranty, controller board and software
- For volume orders, custom sizes are available - please call for details
- Multi-touch option available

Diagonal Size	10.4"	12.1"	15"	17"	19"	21.5"
Dual / Single Touch Foil	£ 199	£ 215	£ 250	£ 275	£ 299	£ 325

USB Cable & Earthing Cable	£ 40
----------------------------	------



## Interactive Glass Overlay (Single / Dual Touch)



Interactive touch glass overlays to work in conjunction with LCD/LED screens (PCAP technology)

Simply transforms any existing LCD/LED screen into an interactive touch display. Ideal for integration within POS displays, kiosks and industrial grade applications.

- Premium quality single/dual touch glass (up to 2 touch points)
- Toughened anti-glare glass (4-6mm)
- Single touch up to 20mm overall thickness, dual touch up to 6mm
- High resolution controller
- Operating system: Windows & Linux
- Includes 1-year warranty, software, controller board & cables
- Optional black screen printed border - please call for details

Diagonal Size	10.4"	12.1"	15"	17"	19"	21.5"	27"
Interactive Glass Overlay	£ 250	£ 275	£ 299	£ 325	£ 375	£ 450	£ 625

USB Cable & Earthing Cable	£ 40
----------------------------	------



## Multi-Touch PCAP Glass Overlay



Interactive touch glass overlays to work in conjunction with LCD / LED screens (PCAP technology)

Simply transforms any existing LCD/LED screen into an interactive touch display. Ideal for integration within POS displays, kiosks and industrial grade applications.

- Premium quality multi-touch glass (10 touch points)
- Multi-touch up to 10mm overall thickness
- Toughened safety glass
- Optimum clarity and touch sensitivity
- High resolution with fast response time
- Operating system: Windows, Linux & Android
- USB HID Plug & Play
- Black border included
- Anti-Glare options available

Diagonal (16:9)	32"	43"	49"	55"	65"	75"	86"
Multi Touch PCAP Overlay	£ 950	£ 1,195	£ 1,595	£ 1,750	£ 1,995	£ 3,250	£ 3,995
Mirrored Finish	£ 1,275	£ 1,625	£ 2,150	£ 2,425	£ 2,795	£ 4,250	£ 5,495

USB Cable	£ 30
-----------	------



# Retrofit Touch Frames (infrared)

## Retrofit Multi-Touch Frame (standard sizes)



Retrofit frame kits to add multi-touch functionality to any screen technology (IR overlay)

Simply converts any existing plasma, LCD/LED or projection screen into a multi touch display.

- Infrared 6 point multi-touch frames
- 4 piece kit – simple assembly & installation
- High resolution: 4096 x 4096 pixels
- Fast response speed: <16ms
- USB HID Plug-n-Play – simple calibration
- Operating systems: Windows, Linux, Android & Mac
- Optional anti-glare protective glass fascia – see pricing below



Diagonal (16:9)	31.5"	40" / 43"	46" / 48"	49" / 50"	55"	60"	65"	70"	75"	80"	84"	86"	98"
Multi-Touch Frames	£ 425	£ 495	£ 575	£ 625	£ 695	£ 795	£ 825	£ 1,175	£ 1,250	£ 1,425	£ 1,575	£ 1,675	£ 1,950
Clear Protective Glass Overlay	£ 75	£ 95	£ 125	£ 150	£ 175	£ 195	£ 250	£ 295	£ 325	£ 375	£ 425	£ 450	£ 495

Only single touch operation is available on macOS. For anti-glare overlays please see page 17. For optional 10 point touch, add 15% to the above prices.

## Retrofit Multi-Touch Frame (large and custom sizes)



Retrofit frame kits to add multi-touch functionality to large format & custom size screens (IR overlay)

Simply converts any existing screen/video wall into a multi touch display.

- Infrared 6, 12 or 32 point multi-touch frames
- Simple assembly & installation
- Touch accuracy +/- 1.5mm
- Touch resolution: 32,768 x 32,768
- Fast response speed 7–16ms
- Includes drivers – simple calibration
- Operating systems: Windows, Linux & Mac
- Optional anti-glare protective glass fascia – see pricing below
- Custom sizes up to 400" diagonal



Price per diagonal inch	6-point multi-touch	12-point multi-touch	32-point multi-touch
Custom sizes up to 100"	£ 20	£ 30	£ 40
up to 150"	£ 25	£ 35	£ 45
150" and larger	£ 30	£ 40	£ 50

## Multi-Touch Switchable Smart Glass Screen



Interactive switchable glass projection walls and partitions

Turn instantly at the flick of a switch from a clear glass panel into an HD / 4K rear projection screen with a multi-touch interactive surface. Available in standard glass screen sizes from 65"-134" diagonal or as modular glass wall panels up to 8000 x 3000mm.



- Ultra clear switchable glass screen (110vac)
- Standard screen sizes 65" - 134" diagonal
- Modular panels for glass walls & partitions
- Multiple panels can be joined to create a multi-touch video projection wall
- Infrared touch frame technology (6 point touch)
- Price includes 50/110vac transformer and RF remote control switch



Diagonal (16:9)	65"	80"	98"	120"	134"
Screen Size (mm)	1439 x 809	1771 x 996	2159 x 1214	2657 x 1494	2966 x 1669
Interactive Smart Glass Screen (infrared 6 point touch)	£ 2,450	£ 3,950	£ 4,950	£ 6,750	£ 8,950

Oversized glass to fit into partition / frame. Optional metal frames available, see page 25.





## UST Multi-Touch Rear Projection Screen



Rear projection screen with infrared multi-touch technology

Digital Glass rear projection screen with 6 point multi-touch interactive frame.

### Specifications

- Neutral-grey glass rear projection touch screen
- Peak gain: 0.65
- Viewing angle: 160°
- Suitable for ultra short throw projectors
- Superior HD/4K image quality
- Includes wall mount frame or portable stand

### Typical Applications

- Meeting rooms & boardrooms
- Exhibitions & rental applications
- TV studios & control rooms
- Shops & shopping centres
- Airport, train & bus stations
- Museums & visitor attractions

Diagonal (16:9) (Digital Glass)	80"	98"	120"
Multi-Touch Rear Projection Screen (Framed)	£ 3,750	£ 5,450	£ 7,495
Portable Multi-Touch Rear Projection Screen	£ 4,450	£ 6,250	£ 8,495

Custom sizes available & for more information about the touch frame specification see page 36.



## UST Multi-Touch Front Projection Screen



Front projection screen with infrared multi-touch technology

High gain front projection screen with 6 point multi touch interactive frame.

### Specifications

- High gain front projection touch screen
- Peak gain: 1.6
- Viewing angle: 160°
- Suitable for short throw projectors
- HD/4K image quality
- Includes wall mount frame or portable stand

### Typical Applications

- Ideal for whiteboard applications
- Schools & universities
- Meeting & training rooms
- Exhibitions & rental applications
- Conferences & events
- Multimedia presentations

Diagonal (16:9)	80"	98"	120"
Multi-Touch Front Projection Screen	£ 2,750	£ 4,150	£ 5,495
Portable Multi-Touch Front Projection Screen	£ 3,450	£ 4,950	£ 6,495

Custom sizes available & for more information about the touch frame specification see page 36.



## UST Large Format Multi-Touch Projection Screen



Large format rear projection screen up to 8 x 3 metres with multi-touch technology

Digital Glass rear projection screen with 6, 12 or 32 point multi touch interactive frame.

### Specifications

- Advanced optical coatings for glass and acrylic
- Coatings for both short throw and edge blending
- Peak gain: ranges from 0.65–2.5
- Viewing angles: 120°–160°
- Optical glass sizes up to 6000 x 3000mm and lightweight acrylic sizes up to 8000 x 3000mm
- Custom screen sizes and aspect ratios

### Typical Applications

- Auditoriums & meeting rooms
- TV studios & control rooms
- Airport, train & bus stations
- Museums & visitor attractions
- Leisure facilities & music venues
- Exhibitions & conferences

Diagonal Size	Custom sizes available up to 8 metres x 3 metres with a choice of 6, 12 or 32 point touch
Large Format Multi-Touch Projection Screen	Please call for details

## Large Format Multi-Touch Screen



### Multi touch monitors for a wide range of commercial applications

High definition commercial grade displays designed for 24/7 continuous use.

#### Specifications

- Infrared 6 point multi touch displays
- High contrast screens
- Wide viewing angles
- Touch resolution: 4096 x 4096
- Touch response time: 8ms
- Commercial screens (24/7 applications)

#### Typical Applications

- Reception areas & Information points
- Meeting rooms & boardrooms
- Schools & universities
- Shopping centres & malls
- Airports, bus & rail stations
- Museums & visitor attractions



Diagonal (16:9 High Definition Screens)	43"	55"	65"	75" 4K	86" 4K
Prices from	£ 1,150	£ 1,350	£ 1,675	£ 2,950	£ 4,350
Optional Wall Mount	£ 25	£ 25	£ 50	£ 95	£ 125

Custom specifications and integrated PC options available.

## 65" Multi-Touch Screen (Interactive Whiteboard)



### Multi touch monitor for a wide range of commercial applications

High definition commercial grade whiteboard display designed for 24/7 continuous use.

#### Specifications

- Infrared 6 point multi-touch display (1080p)
- Superior brightness, contrast & wide viewing angles
- Integrated webcam for video conferencing
- Easy access – front connectivity (USB, HDMI)
- Excellent touch accuracy & fast response times
- OPS slot for optional integrated PC
- Operating systems: Windows, Linux, Android & Mac

#### Typical Applications

- Schools & universities
- Meeting & training rooms
- Boardrooms & Conference facilities
- Showrooms & reception areas
- Digital signage applications
- Public Information displays



	Price
65" Multi-Touch Monitor (16:9)	£ 1,675
Optional Wall Mount	£ 50
Chrome wheeled stand with safety brakes	£ 395
Economy OPS Slot-In PC	£ 325
Premium OPS Slot-In PC	£ 675
Windows License	£ 120

## IP65 Outdoor High Brightness Touch Screen



### Sun-readable touch screens for outdoor applications

Commercial grade high brightness HD displays with PCAP through glass touch technology.

#### Specifications

- High quality multi touch glass
- 2500 nits brightness for sun-readable applications
- High contrast screen with wide viewing angles
- Portrait or landscape orientation
- Optional WIFI/LAN module

#### Typical Applications

- Store window touch screens
- Digital signage displays & kiosks
- Outdoor video & advertising screens
- Retail stores & shopping centres
- Airports, bus & rail stations
- Museums & visitor attractions



Diagonal (16:9 High Definition Screens)	43"	49"	55"	65"	75"
High Brightness Outdoor Touch Screens	£ 3,675	£ 4,625	£ 6,250	£ 8,750	£ 14,950
Outdoor Touch Kiosks	£ 5,250	£ 5,950	£ 7,950	£ 9,950	£ 18,250





## Branded Interactive Kiosk

### Freestanding digital signage kiosks with multi-touch technology

HD commercial grade portrait displays designed for 24/7 applications.

#### Specifications

- Infrared multi-touch displays
- Freestanding slimline design
- Protective glass fascia & integral speakers
- 43" or 49" HD 1080p portrait screen
- Optional custom designs and colour fascia / logos or full colour graphics

#### Typical Applications

- Hotels & reception areas
- Car showrooms & information points
- Travel agents & financial institutions
- Shops & shopping centres
- Airports, bus & rail stations
- Museums & visitor attractions

43" Multi-Touch Kiosk (Integrated PC) - Gloss Black

49" Multi-Touch Kiosk (Integrated PC) - Gloss Black

Full Colour Graphics / Custom Logos

Windows License

Price

£ 2,495

£ 2,995

£ 195

£ 120



## Landscape Interactive Kiosk

### Freestanding landscape digital signage kiosks with multi-touch technology

Large format commercial grade interactive kiosk solution ideal for information display and wayfinding applications.

#### Specifications

- Infrared 10 point multi-touch technology
- 55" HD 1080p commercial grade display
- Protective fascia & integral speakers
- Brightness - 450 candela per m2
- Contrast ratio - 1100:1
- Integrated PC with optional Windows

#### Typical Applications

- Shops & shopping centres
- Reception areas
- School, College & University wayfinding
- Airports, bus & rail stations
- Car showrooms
- Museum & visitor attractions

43" Landscape Information Kiosk

55" Landscape Information Kiosk

Windows License

Price

£ 2,495

£ 2,995

£ 120



## Interactive Brochure Stand

### Freestanding advertising brochure display with multi-touch technology

This freestanding display combines a traditional brochure stand with a 22" Android multi-touch display.

#### Specifications

- 22" commercial grade LCD display
- Full HD 1080p display
- IR 10 point multi-touch
- Brightness - 250 candela per m2
- Contrast ratio - 1000:1
- Integrated Android media player

#### Typical Applications

- Trade shows & exhibitions
- Travel agents
- Car showrooms
- Estate agents
- Corporate office receptions
- Museums & visitor attractions

22" Interactive Brochure Stand

Price

£ 1,750

## Interactive Mirror Glass Overlay



Convert any TV or monitor into a multi-touch mirrored display

Simply retrofit to existing monitors combining a highly reflective mirror & multi-touch IR technology.



- Infrared 6 point multi-touch overlays
- Optical mirror glass overlays with blacked-out borders and fixings
- 'High reflective' tint finish
- Mirrored fascia transforms instantly the screen is switched on to reveal HD images
- Suitable for portrait or landscape orientation



Diagonal (16:9)	32"	40"-43"	46"-48"	49"-50"	55"	60"	65"	70"	75"	80"	86"	98"
Interactive Mirror Glass Overlay	£ 750	£ 895	£ 995	£ 1,150	£ 1,295	£ 1,650	£ 1,875	£ 2,375	£ 2,650	£ 2,995	£ 3,450	£ 3,950

Custom sizes available & for more information about the touch frame specification see page 36. PCAP technology is also available for custom applications – please call for details.

## Multi-Touch Mirrorvision Display



Mirrored multi-touch display designed for commercial applications

Commercial grade monitors combining a highly reflective mirror & multi-touch IR technology.



- Infrared 6 point multi-touch displays
- Ideal for retail stores & changing rooms
- Silver high reflective mirror finish
- Content appears magically on screen, reverting back to a mirror when no content is displayed
- Commercial grade HD / 4K screen for 24/7 use
- Portrait or landscape orientation



Diagonal (16:9 High Definition Screens)	32"	43"	50"	55"	65" 4K	70" 4K	86" (4K UHD)
Interactive Mirrored Display	£ 1,425	£ 1,750	£ 2,250	£ 2,750	£ 3,650	£ 5,450	£ 7,450
Optional Wall Mount	£ 25	£ 25	£ 25	£ 50	£ 50	£ 95	£ 125

Custom sizes available & for more information about the touch frame specification see page 36. PCAP technology is also available for custom applications – call our sales team for details.

## Interactive Video Walls



Large format video wall with interactive multi-touch overlay

Bespoke large format video walls with interactive overlay and optional Mirrorvision glass fascia.



- 49" and 55" display options available
- Full HD 1080p
- 6 point, 12 point and 32 point multi-touch options
- Protective fascias available
- Mirrorvision fascias available
- Custom layouts and configurations available
- Custom freestanding housing available



Example pricing below is based on popular formats of Interactive Video Walls using 55" Video Wall Displays (6-point touch) - custom sizes are available on request.

Product	1 x 3 (3 x 55" Tiles)	2 x 2 (4 x 55" Tiles)	3 x 2 (6 x 55" Tiles)	3 x 3 (9 x 55" Tiles)	4 x 3 (12 x 55" Tiles)
Standard Glass (Video Kit)	£ 8,750	£ 11,450	£ 16,950	£ 22,750	£ 29,995
Mirrorvision Glass (Video Kit)	£ 9,995	£ 12,950	£ 19,250	£ 26,450	£ 34,950





## Multi-Touch Transparent LCD Screen



### Transparent LCD screens with multi-touch IR technology

Transparent HD / 4K touch screens for shopfitting and integration (24/7 applications).

#### Specifications

- Infrared 6 point multi-touch displays
- Includes display, media board & cables
- Designed for integration into your own housing
- Transparent screen with wide viewing angles
- Portrait or landscape orientation
- Bespoke display cases available - please call

#### Typical Applications

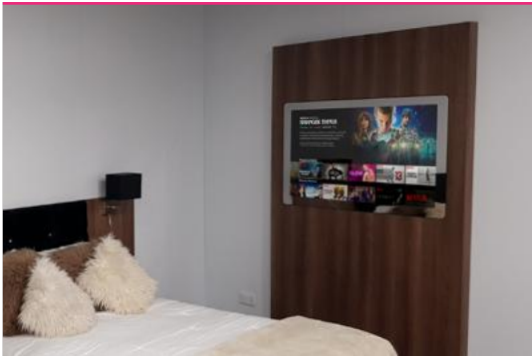
- Integration into display furniture
- Integration into appliances/vending
- Store window displays
- POS/POP displays
- Trade shows & product launches
- Museums & visitor attractions

Diagonal (16:9)	23"	32"	43"	49"	55"	65" 4K	70"	86" 4K	98" 4K
Interactive Transparent LCD with clear protective glass fascia (Multi-Touch)	£ 1,425	£ 1,950	£ 2,350	£ 2,995	£ 4,125	£ 5,995	£ 8,750	£ 14,250	£ 24,995
Interactive Display Cases	£ 2,950	£ 3,500	£ 4,750	£ 5,750	£ 7,250	£ 9,450	£ 15,750	£ 21,450	£ 32,750
LED Lighting Kit / Transformer	£ 150	£ 195	£ 250	£ 295	£ 350	£ 450	£ 575	£ 695	£ 750

Transparent LCD Screens can be used for video wall applications - please call for details.



## Interactive Wall Panel



### Create a feature wall with our multi-touch interactive wall panels

Choose from a range of finishes - solid colours, wood effects and full colour graphics. The panels are available with different screen sizes and incorporate our PCAP technology offering 10 touch points and built-in PC. Suitable for 24/7 applications with simple Plug & Play installation (complete with wall fixings).

#### Specifications

- Custom sizes, designs, and finishes
- Active touch area 32"-55" diagonal
- Optional mirror glass touchscreen
- Built-in PC with Windows and Android OS
- Wide viewing angles in landscape or portrait

#### Typical Applications

- Reception areas
- Meeting rooms and offices
- Hotels and restaurants
- Retail stores
- Banks & Financial institutions
- Car dealerships

Standard Decorative Wall Panel (Dimensions)	1200 x 2350 x 80mm	1400 x 2350 x 80mm	1400 x 2350 x 80mm
Diagonal (16:9)	43"	50"	55"
Interactive Wall Panel	£ 3,950	£ 4,500	£ 4,950

\*Custom panel finishes, sizes and Mirror Glass finish available on request - please call for details.

Optional Windows license - £120.



## Interactive Touch Tables

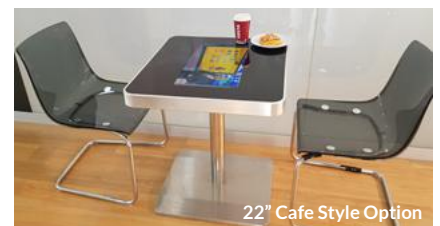


### Standard and custom designed multi-touch tables and furniture

Our new range of multi-touch tables and furniture utilises PCAP technology, offering 10 touch points and the most responsive and sensitive surface for 24/7 applications. A number of standard products are available and we can custom design both tables and furniture to meet with a customer's specific requirements.

#### Features

- Connect other devices via HDMI, VGA, USB
- Full HD 1080p resolution
- Standard tables and decorative wall panels
- Custom designs and finishes



22" Café Style Option

Various Table Design (active area)	22"	32"	42"	46"	50"	55"
Prices from	£ 2,750	£ 3,450	£ 3,950	£ 4,250	£ 4,750	£ 5,250
22" Café Style Interactive Touch Table						£ 2,950

\* 50" model as pictured above. Custom designs, finishes and larger table sizes are available upon request.

Optional Windows license - £120.

## Novotel, London Heathrow

Laminate Switchable Glass

Intelligent Glass supplied the Novotel hotel with Laminated Switchable Glass in 136 rooms to be used as a versatile and awe-inspiring solution to shower / bathroom privacy, allowing natural light to flow throughout the space, opening up the atmosphere of the room.

Ben Kershaw, Managing Director of Pro Display was incredibly pleased with the install saying: "This project was a fantastic challenge, bringing together leading technology from our Pro Display and Intelligent Glass divisions at one incredibly cutting-edge hotel. Novotel clearly see the benefits of using Switchable Smart Glass to enrich the experience of their customers in both practical terms and style. This project helps to bring Pro Display and Intelligent Glass closer to the hospitality industry, as more companies switch on to the returns combining innovative technology with 'out of the box' thinking can bring."



## Sky Sports News

PCAP Glass Overlay

Touchscreen technology is increasingly important to Sky, and is widely used on sports productions, however for Sky Sports News the challenge was to have the thinnest possible bezels around the screens. Head of Technology at Sky Sports, Mike Ruddell, said: "Because every part of the newsroom is part of the studio, the screens would be seen from 360°, so infrared technology was not going to be the best choice. They are affected by studio lighting, which is fine if the screen is in a fixed position, but we have three Sky Pads (touch screens) in the newsroom, all being twisted around, and it had to work as a screen from any direction." To achieve a thin bezel, they decided on intouch Projected Capacitive Touch Technology custom designed for Sky. 32", 55" and 75" Sky Pads were implemented using commercial grade displays designed to work 18 hours a day, 365 days a year.



## Ruskin School of Art

Switchable Smart Film

This project, commissioned by Ruskin School of Art, specified by Spratley Studios is no standard privacy application, applying an inventive spin on its projection capability, as you would expect from the Fine Art Department of The University of Oxford. Serving as the hub for some of the most creative minds of a generation, certain demands from such an environment are of course to be required. There are so many uses of switchable technology, serving as an incredibly handy tool for artists, with the only limit being their imagination. Their application of our Switchable Film is not only creative, but it is also effective, both inspiring for students and raising awareness of their prowess in art- this project is one that offers so much more than the basic functionality of Switchable Glass. Ruskin cleverly utilise rear projection in its external switchable glass windows to project a dissected video that appears to interact with the windows as individual screens.



## Farnborough Air Show

Transparent LCD Screen

Pro Display supplied its 65-inch Multi-Touch Transparent LCD Screen to live event specialists Ouno Creative. The holographic-effect interactive display showcases the latest jet engine products from Ouno's client, GKN Aerospace. Farnborough Airshow is the world's premier commercial and military trade event. Ouno's brief was to present GKN's innovative technologies in a standout way that builds on the established trade show format.

Ouno featured a large model of a jet engine inside a purpose-built case, with the Transparent Touch Screen placed between the viewers and the model to create a holographic effect interface. Ouno then designed and developed interactive HD content to enable lucrative commercial presentations to be made during the trade show, while also reinforcing the high tech theme of the GKN pavilion.



## NHS Hospital, Paisley

Switchable Laminated Glass

Trusted by some of the world's most important institutions to provide Switchable Smart Glass solutions, the NHS is no exception amongst the wide range of groups who have called on Intelligent Glass to deliver practical, state of the art privacy solutions in line with our level of commitment to quality. One such project for the NHS that's helping to revolutionise the way patients are treated at a hospital in Paisley saw 42 panels of 12mm Laminated Switchable Smart Glass installed into 5 of their critical patient areas on their ICU ward. With this installation, staff are able to change the privacy glass that shrouds the rooms instantly from a designated nurse's control station, offering a unique and effective privacy solution that allows critical patients and their family to enjoy privacy whilst giving those responsible for their care a fast option to be able to monitor them should they need to.





Pro Display Digital Glass UST rear projection screen on Hitachi's stand at GITEX Dubai



Pro Display Ultra Black rear projection screen on Epson's stand at Midwich Tech Exposed



Pro Display Projection Mapping Film at ISE in partnership with Panasonic



Pro Display's Mirrorvision overlay teamed with a 70" NEC monitor at the NEC Showcase



Panasonic, Pro Display and NEC jointly sponsor an AV trade show in Japan

## PRODISPLAY® Partner to the AV industry

NEC

Pro Display has built strong and close relationships with the leading projector manufacturers worldwide.

EPSON

The projector is only one half of the equation, as any professional AV installer will agree. Choosing a quality screen is hugely important for professional results.

Panasonic

The quality and reputation of Pro Display's screens is such that they are often used by brands like NEC, Epson, Panasonic and Hitachi, on their own trade show stands, partnered with their newest and best projector hardware.

HITACHI

Choosing a Pro Display screen completes the equation, delivering image performance beyond your expectations.

Visit [prodisplay.com](http://prodisplay.com) to find out more



E: sales@prodisplay.com  
T: +44 1226 361 306  
F: +44 870 766 8437

Unit 5 Shortwood Business Park  
Sheffield S74 9LH  
United Kingdom

