



MIRRORVISION®

LUXURY BY DESIGN

## INNOVATIVE MIRROR TV SOLUTIONS

FOR COMMERCIAL & RESIDENTIAL  
APPLICATIONS

AS SEEN ON  
'60 MINUTE MAKEOVER'

itv



BRITISH MANUFACTURER



“

*We recently installed one of Pro Display's Mirrorvision® TVs on 60 Minute Makeover and the whole thing looked amazing. I think our director James is looking into a way of incorporating their Switchable Glass into an upcoming episode. Fingers crossed!*

ITV, 60 MINUTE MAKEOVER

”

Established over 15 years ago, Pro Display is a British manufacturer, based in the heart of the UK that fabricates and supplies innovative audio visual solutions to businesses and homes all over the world.

Our roots start well before the establishment of what is now the Pro Display Group, with our early innovations including the introduction of the first full colour LED screens into Europe in the 1990's. Now, more than 25 years later, our research and development is thriving in every branch of the business, continuously developing our products and improving patented technologies.

Our enthusiasm for audio visual technology over the years created a window to make our products accessible to more than just commercial buyers, with our Intelligent Glass and Platinum Vision ranges bringing Smart Glass and AV technology into the home.

Whilst we've been trading, we have supplied our products over 150 countries across the globe, from shipping the largest Rear Projection Screen in the middle east to its home in Dubai to daily shipments of Switchable Glass to homes around the UK. Our track record speaks for itself and along with the help of our international partners we are able to fulfil residential and commercial projects worldwide every day, no matter how big or how small.

MADE IN BRITAIN  
**OUR STORY**



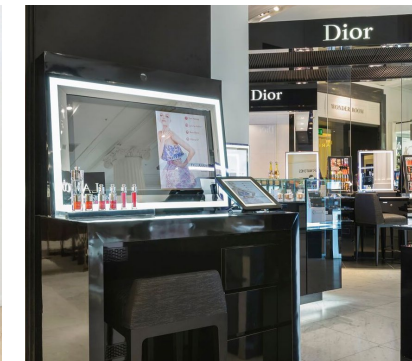
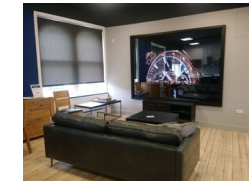
# MIRRORVISION® FOR COMMERCIAL

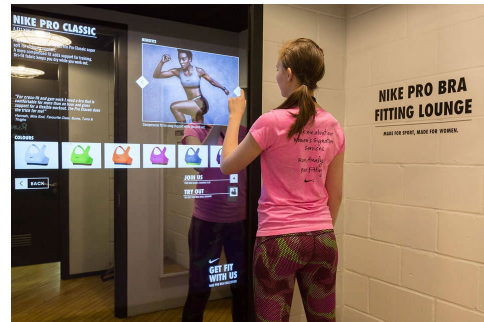
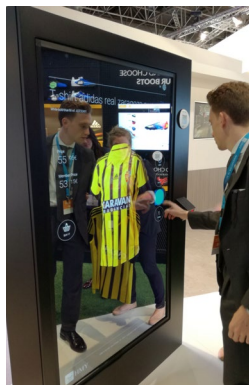
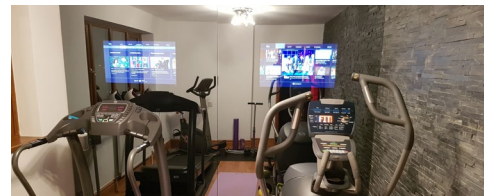
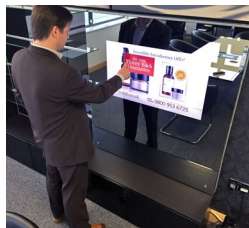
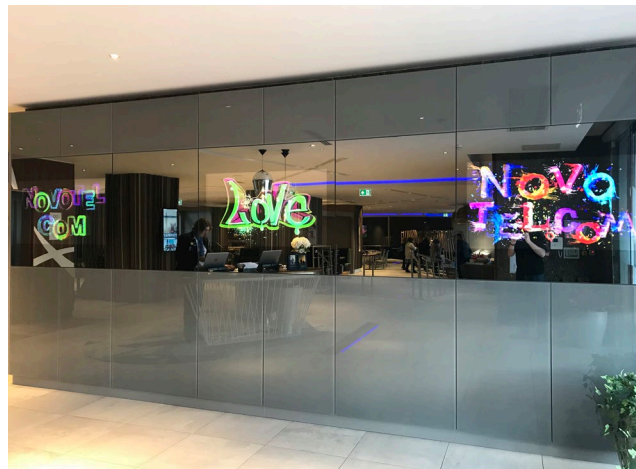
Mirror Screen's are fast becoming one of the most popular upgrades to commercial spaces and Pro Display offers solutions for any application. From retail to visitor attractions, we've seen our Mirrorvision® technology used in some amazing projects, the beauty of our product is how versatile it can be, with our dedicated team working with you every step of the way to provide the perfect solution.

By taking the time to understand all the ins and outs of each application, we can create a bespoke product that's manufactured to suit its environment. From choosing the perfect mirror tint to upgrading the display itself, we know what works and how to bring it to life ultimately leaving you more satisfied than any 'off the shelf purchase'.

We see our Mirrorvision® used most popularly in retail and cosmetic applications where, understandably, mirrors are in high demand. This Mirror Screen technology integrates perfectly onto your shop floor, dressing rooms and POS displays, providing you with an innovative new advertising space. Mirrorvision® also provides the perfect enhancement to cosmetic stalls and salons for both advertising and educational purposes, with the opportunity to utilize them for master-classes and enhance floor sales.

The hospitality sector is also a big fan of Mirrorvision®, with hotels integrating Mirror TV's into their hotel rooms as an innovative space saving solution and nightlife venues updating their decor with our mirror technology. We've also supplied museums and visitor attractions as well as some of the worlds leading brands.





# UNIQUE PROJECTS

## CUSTOM BUILDS

Believe it or not, the majority of our commercial Mirrorvision® projects are custom built to the requirements of our customer! It might not seem it at first, but just with the option to choose from a range of screen sizes and mirror tints, it's very easy to create a bespoke product without realising. But our customisation options don't stop there, we can manufacture Mirrorvision products in a huge range of shapes and sizes, from video walls to interactive screens and kiosks.

Video Walls are a great way to grab the attention of your audience and with the addition of our mirror technology, they're practically impossible to ignore! We've worked previously with Novotel, producing a video wall consisting of 3 screens and several oversized Mirrorvision® glass panels, giving them a great advertising opportunity that's also discreet enough to blend into the sophisticated decor. For something with more impact we've recently developed the Mirror LED Wall, the first of it's kind on the market, combining the punch of LED advertising with the elegance of mirror technology.

One of the most popular enhancements for our Mirrorvision® range is interactivity. Opting for a multi touch mirrored product increases the likelihood of customer engagement and brand recognition. We supplied Nike with our Interactive Professional Mirror Displays which they used as part of a 'Bra Fit' promotion, providing shoppers with the option to browse products at their leisure; a great up-selling opportunity for the store.

We're also frequently asked to oversize the mirror glass and even provide matching surrounds to create feature walls, with some customers requesting bespoke shapes to create a truly unique Mirrorvision® product.



# MIRRORVISION<sup>®</sup>

## FOR THE HOME

Mirror's are an integral part of home decor; Houzz, an online interior design powerhouse, asked users 'how many mirrors are there in your home' to which over 75% confirmed they had 5 or more! Our Mirrorvision<sup>®</sup> range is the perfect way to optimise how you use your space, with options suited to every room in the house.

It's common to struggle with space in bedrooms so by combining your TV and mirror imagine how much room you could save! Our Mirror TV Overlay Kits literally let you turn your existing TV into a mirror and with a selection of decorative frames, you can design your overlay specifically to suit your existing decor. For more aesthetic applications, we can also manufacture a Full Length Mirror TV solution, made using a smaller screen and oversized piece of glass ideal for dressing room applications.

We understand the certifications and considerations needed for using mirror technology around the home, manufacturing specialist Mirrorvision<sup>®</sup> products that comply to the necessary safety regulations, including bathroom safe TV's which can replace existing vanity units.

Our Mirror TV's have been featured on ITV's '60 Minute Makeover', adding the finishing touch to their brand new living room, which before lacked wall space and was in desperate need of an innovative upgrade to bring the room together. The team chose a statement ornate gold frame to give the TV the authenticity of a standard mirror when off, providing even more of a surprise when the TV was revealed.



## CHOOSE A TINT

### TINT

THREE TINTS TO CHOOSE FROM EACH SUITED SPECIFICALLY TO YOUR NEEDS WHETHER THOSE BE PRIMARY COSMETIC OR FOR IMAGE QUALITY

For reference:

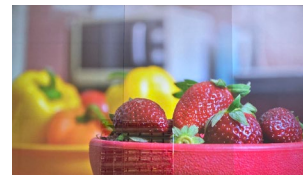
(Ultra High Reflective | High Reflective | Standard)



OFF



DARK IMAGE



BRIGHT IMAGE

## CHOOSE A FRAME

### FRAME

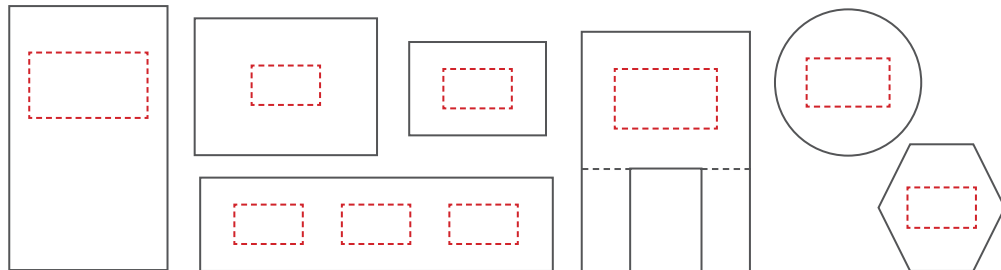
HUGE SELECTION OF FRAMES WITH ORNATE, MODERN AND TRADITIONAL OPTIONS IN A RANGE OF WIDTHS TO SUIT ANY DECOR.



## GET CREATIVE

### CREATE

OVERSIZE YOUR GLASS OR CHANGE THE SHAPE TO CREATE A SOLUTION COMPLETELY INDIVIDUAL TO YOUR HOME



# CUSTOMISATION MAKE IT YOURS

Our Mirrorvision® range can be tailored to fit seamlessly into your home, with a range of mirror tints and customisation options to ensure it works perfectly in the desired area.

Choosing a tint is made easy with the assistance of our experienced sales team, by taking into account the main use of the mirror and its location, they can advise on what they believe will work best for you. Our 'Standard ' Mirror tint is used mostly in applications that will be used more frequently as a screen than a mirror, producing a very high quality image when switched on. Our 'High Reflective' tint is ideal for those applications that require the best of both worlds, producing a high quality image and a high quality reflection when turned off. Lastly, our 'Ultra High Reflective' tint is most popular for applications that are primarily cosmetic, with incredible reflectivity qualities and high quality images in the right environment.

As an alternative to the standard frameless option, we offer a huge selection of decorative frames to make your Mirror TV appear more decorative when turned off. We hand select frames based on your specifications and short-list these for you to find the perfect match without the hassle.

Got something more elaborate in mind? We can oversize single pieces of glass to create full length mirrors or manufacture the glass in bespoke shapes (circles, hexagons etc.) to create a truly unique product for your home. We can also provide additional glass panels, matching your Mirror TV, to create a feature wall system, custom manufactured to the dimensions of your home.

**PRODISPLAY**<sup>®</sup>

HELLO@PRODISPLAY.COM

WWW.PRODISPLAY.COM

+44 (0)1226 361 306

-----

UNIT 5, SHORTWOOD BUSINESS PARK

HOYLAND, BARNLEY

SOUTH YORKSHIRE

S74 9LH