

**PRODISPLAY**<sup>®</sup>

55" OUTDOOR HIGH BRIGHTNESS TOUCH SCREEN

OUTDOOR SCREEN SOLUTION



# WE ARE PRO DISPLAY

We are Pro Display, an award-winning manufacturer and innovator of premium display technology with over 25 years worth of experience in optical screen Research and Development.

Exporting to over 150 countries, Pro Display is well renowned in the display industry for our emphasis on quality and customer care.

Specified by some of the world's leading brands, we have been a trusted manufacturer for over 15 years, receiving recognition for our continued contributions to the AV industry and for developing new technologies that cater to a range of markets.

## THE PRO DISPLAY GROUP

The Pro Display Group consists of Pro Display, Intelligent Glass and intouch.

Pro Display, the division at the forefront of The Group's prestigious repertoire manufactures an innovative range of AV and Digital Signage solutions designed to advertise, inform and entertain.

Intelligent Glass, the UK's leading switchable technology manufacturer specialise in switchable glass & film, offering the most unique range of switchable products on the market.

intouch focuses on interactivity, bringing you the future of multi-touch today, supplying a range of touch screen solutions designed for new installations and retrofit applications.

**PRODISPLAY**



**intouch**

## BRANDS & PATENTS

The Pro Display Group consists of a set of globally recognisable brands covering a wide range of industry sectors including Intelligent Glass®, intouch™ and Platinum Vision®.

Collectively, the company has developed a number of 'patented' technologies including a number of unique manufacturing processes for their range of smart glass solutions.

# BRITISH MANUFACTURER

Pro Display is a British manufacturer with its European headquarters located near Sheffield, UK. Here we manufacture, assemble and dispatch a wide range of professional grade visual display solutions, smart glass and interactive touch technologies.

Pro Display's newest rigid optical projection screen technologies, Digital Glass and SunScreen, have caught the interest of major global projector manufacturers for their outstanding image quality and performance.

We manufacture some of the world's largest optical rear projection screens up to 8 x 3 meters and have our own in-house wood crating department dedicated to producing hand-crafted protective crates, bespoke to each shipment.

## WE SHIP WORLDWIDE

In 2019 alone, Pro Display shipped to over 80 different locations around the world and have shipped to more than 150 different countries in total.

This means that we understand the rigours and regulations of international shipping. Our export team works hard to ensure that your products arrive exactly when and where you need them, along with all the correct export documentation and technical support.



# 55" INTERACTIVE OUTDOOR DISPLAY

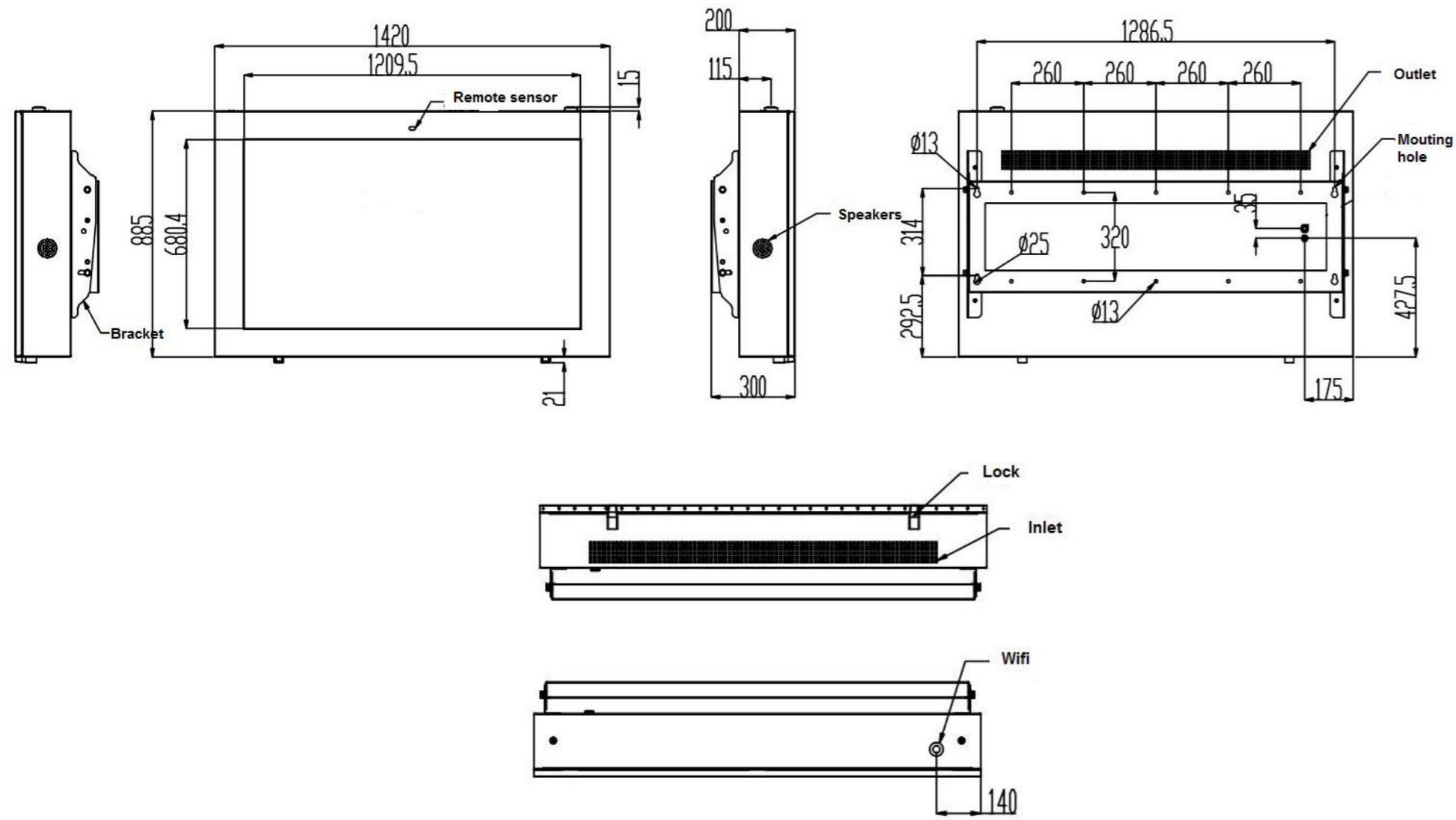


## SPECIFICATIONS

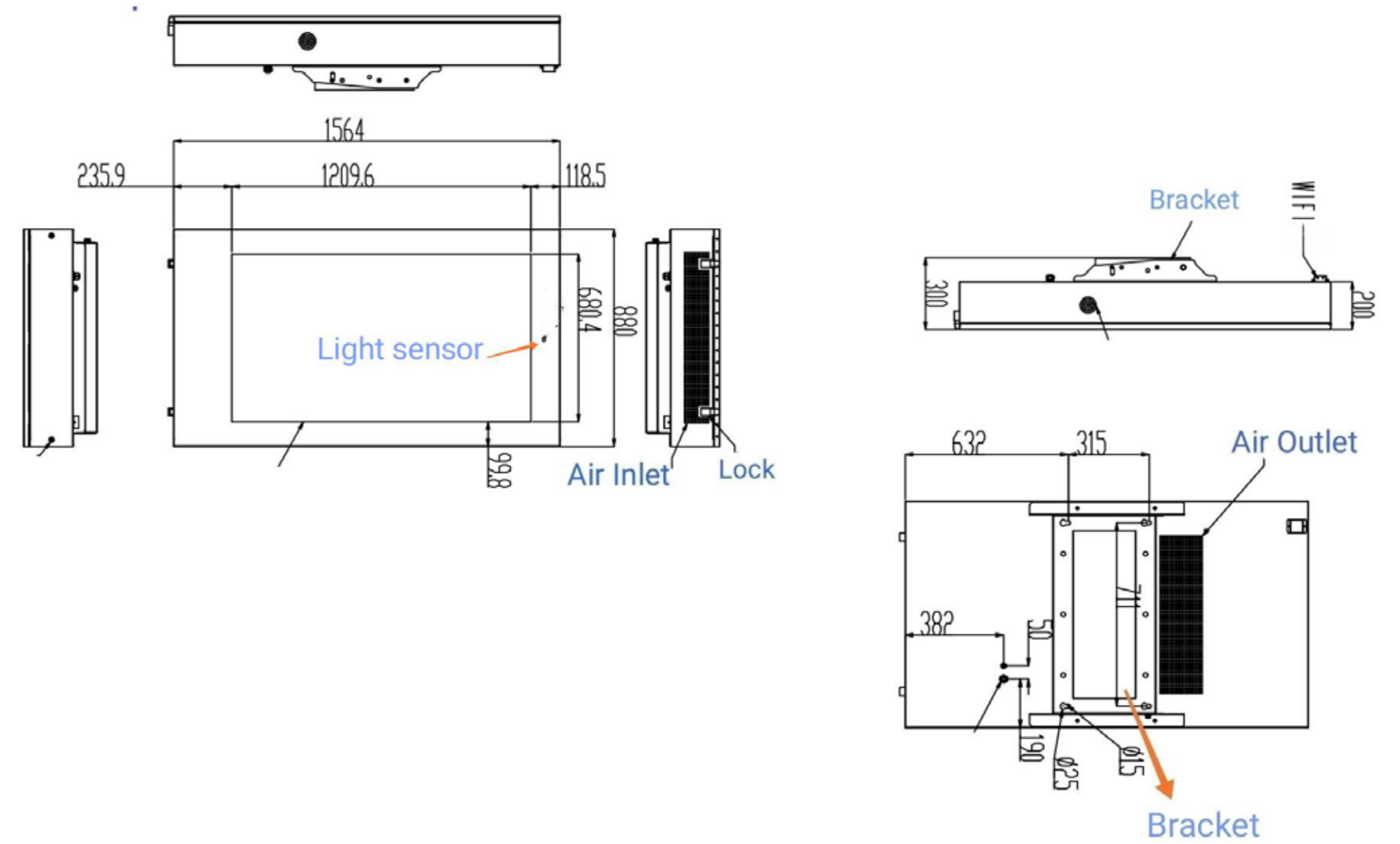
LCD PANEL		TEMPERATURE	
PANEL SIZE	55" LED backlight	WORKING TEMPERATURE	-20°C~50°C
ASPECT RATIO	16:9	HUMIDITY	5 - 95% RH
MAXIMUM RESOLUTION	1920 x 1080	POWER SUPPLY	
ORIENTATION	Landscape/Portrait options	POWER VOLTAGE	AC100~240V
PIXEL PITCH	0.63mm x 0.63mm	POWER CONSUMPTION	Approx 380W
BRIGHTNESS	2500nits	OUTERSHELL	
CONTRAST	3000:1	INGRESS PROTECTION	IP65
VIEWING ANGLE	178°	GLASS SURFACE	5mm Anti Glare Glass
RESPONSE TIME	6.5ms	SURFACE FINISHING	White or Black Powder Coating
LIFE	>60,000 Hours	PROTECTION	Water-proof, dust-proof
TOUCH	10 Point PCAP Touch	ANDROID SOLUTION	
AUDIO	2 x Waterproof 10W Speakers	OS	Android 7.1
OPERATION	24/7	CPU	Quad core Cortex-A17, 1.8GHZ
INPUTS (to Android Player)	WiFi, RJ45, HDMI, USB,	DDR	2G
OUTPUTS (to customer player)	HDMI	ROM NAND FLASH	8G
SECURITY CONFIGURATION			
SENSORS	Intelligent temperature sensor		
	Fan cooling system		
	Brightness Sensor		
		WIFI	Support 802.11b/g/n wifi module

# DRAWINGS

## LANDSCAPE



## PORTRAIT



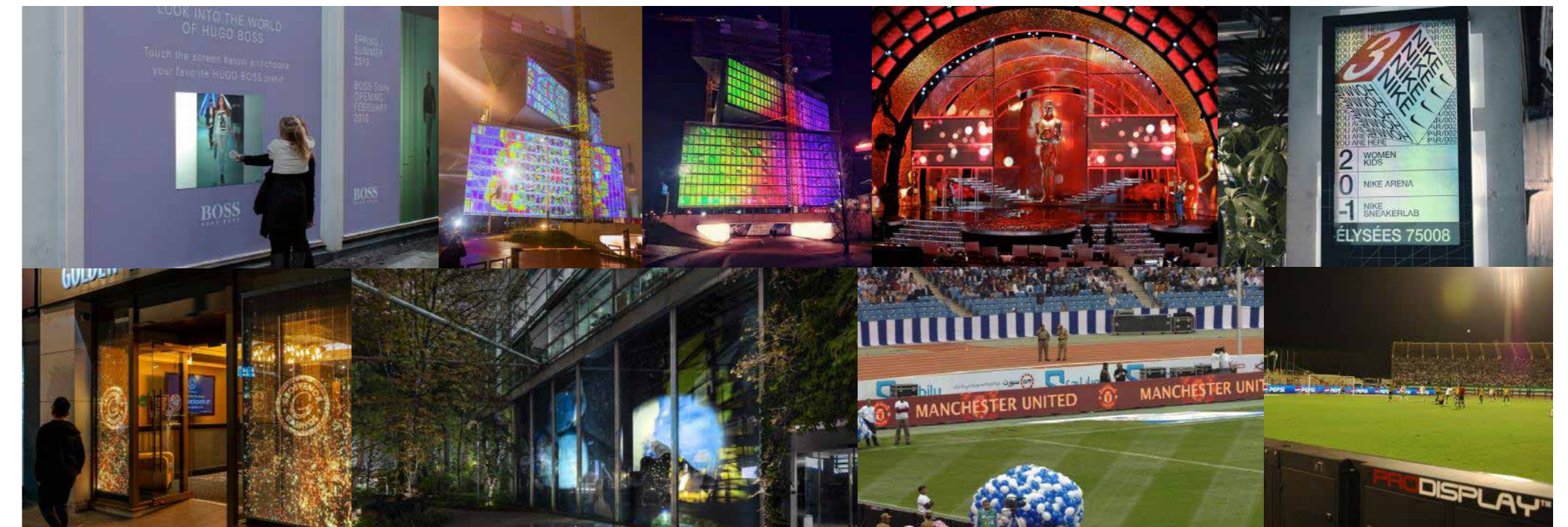


# PRESTIGIOUS PROJECTS

For over 15 years, we've been working with some of the world's biggest brands to bring their projects to life. Possibly the most notable, was our Harrods, London window takeover for the launch of the Rolls Royce Dawn Drophead Coupe using our Switchable Smart Projection Film. Other familiar brands include, Adidas, Mercedes Benz and Nike, who we worked with to bring their way finding vision alive with our Transparent LCD technology in their newest House of Innovation in Paris, France.

We've also worked on many ambitious, large scale projects in our time, including transforming the 392 windows of the nHow hotel, Amsterdam into a projection screen and the 83rd annual Academy Awards (Oscars) Celebration which went on to win us Live Event of the Year at the AV Awards. We've also seen our products feature in multiple blockbuster films, including Guardians of the Galaxy Vol. 2, Wonder Woman 1984 and the Academy Award nominated 'The Midnight Sky'.

As a British manufacturer we've also worked closely with other like-minded businesses and local institutions to provide the best display technology on the market, including projects with local schools, councils and leisure facilities.



# OUTDOOR DISPLAYS

At Pro Display offer a wide range of outdoor display solutions, ranging from fully contained weatherproof units to indoor technology that is used from the outside of the building. Our most popular outdoor displays are the IP65 rated High Brightness Screens, boasting high contrast displays and brightnesses of 3,000nits, with options for interactivity to boost engagement with passing traffic. Another popular solution is our Free-standing Outdoor Kiosks, ideal for visitor attractions like zoos or theme parks and retail applications they are designed for 24/7 use and are manufactured with anti vandalism properties.

As well as our range of LCD technology we also offer Outdoor LED Displays and perimeter systems large format applications. Catering for a range of viewing distances we offer more traditional solutions often used for sports facilities and outdoor events as well as the more unique Transparent LED screens that are best suited to glass façades as they still allow light to pass through.

For projects that don't require a full outdoor solution, our Interactive Touch Foils and Projection Foils can be applied to the inside of any window and interacted with from the other side of the glass, allowing you to extend your reach outside of opening hours without the security concern.



EUROPEAN HEADQUARTERS

Unit 5  
Shortwood Business Park  
Hoyland  
Barnsley  
S74 9LH  
United Kingdom

T : +44(0) 1226 361 306

E : [hello@prodisplay.com](mailto:hello@prodisplay.com)

[WWW.PRODISPLAY.COM](http://WWW.PRODISPLAY.COM)

---

**PRODISPLAY**<sup>®</sup>

© Copyright 2020