

THE
PRODISPLAY[®]
GROUP

"When I discovered Pro Display it made my day! Their touch foil is, in my opinion, the best on the market today. With Pro Display's solution for Disney Park & Resort Paris we were able to re-use the touch displays for different locations, helping Disney on their promotional tour through the Netherlands."

- WALT DISNEY PARKS & RESORTS



THE PRO DISPLAY GROUP

PRODISPLAY®

OPTICAL SCREEN TECHNOLOGIES

"Pro Display manufactures an innovative range of Optical Screens & Digital Signage solutions designed to advertise, inform and entertain"



SWITCHABLE SMART GLASS TECHNOLOGY

"Intelligent Glass® manufactures the widest range of Switchable Glass and Film solutions, designed for commercial and residential applications"

intouch™

TOUCH SCREEN TECHNOLOGIES

"intouch™ brings you the future of multi-touch technology today, with a range of solutions designed for new installations and retrofit applications"

Platinum Vision®

SMARTER INTEGRATED TECHNOLOGY

"Platinum Vision® has combined it's amazing design skills & 'innovative technologies' to launch a range of visual display solutions for home, office & retail interiors"

HISTORY

Pro Display has a rich heritage of innovation in the professional visual display market. Our early innovations include the first full-colour LED screens introduced into Europe in the 1990s and LED perimeter systems in the early 2000s.

Pro Display continues to make substantial investment in R&D, developing its range of optical screens and films to meet the needs of both the commercial and residential AV markets, and many other industry sectors.

INNOVATION

Pro Display's newest rigid optical projection screen technologies, Digital Glass and SunScreen, have caught the interest of major global projector manufacturers for their outstanding image quality and performance.

BRANDS & PATENTS

The Pro Display Group consists of a set of globally recognisable brands covering a wide range of industry sectors including Intelligent Glass®, intouch™ and Platinum Vision®.

Collectively, the company has developed a number of 'patented' technologies including a number of unique manufacturing processes for their range of smart glass solutions.

DID YOU KNOW?

Pro Display have over 25 years worth of Research & Development experience in optical screen technology. Resellers and integrators specify our products for some of the world's leading brands:





MADE IN BRITAIN

Pro Display is a British manufacturer with its European headquarters located near Sheffield, UK.

Here we manufacture, assemble and dispatch a wide range of professional grade visual display solutions, smart glass and interactive touch technologies.

If you're interested in reselling Pro Display products, visit our website today to sign up as a Registered Reseller, and share in our vision.

DID YOU KNOW?

Pro Display manufacture some of the world's largest optical rear projection screens up to 8 x 3 meters and have their own in-house wood crating department dedicated to producing hand-crafted protective crates, bespoke to each shipment.



WE SHIP WORLDWIDE

In 2019 alone, Pro Display shipped to over 80 different locations around the world and have shipped to more than 150 different countries in total.

This means that we understand the rigours and regulations of international shipping. Our export team works hard to ensure that your products arrive exactly when and where you need them, along with all the correct export documentation and technical support.



CIRQUE DU SOLEIL HQ, CANADA



FOX NEWS, USA



83rd ACADEMY AWARDS, USA



MONTERREY MUSEUM, MEXICO



BANESCO, VENEZUELA

EXAMPLES OF PRO DISPLAY PROJECTS AROUND THE WORLD

8 | ABOUT PRO DISPLAY

HELLO@PRODISPLAY.COM | +44(0) 1226 361 306

ISE, THE NETHERLANDS

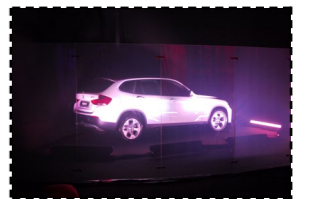


HUGO BOSS, DENMARK



ZURICH THEATER, SWITZERLAND

BMW, RUSSIA



GRAFTON STREET, IRELAND



VOLKSWAGEN, SWEDEN



POLIN MUSEUM, POLAND



DELIGHT 2000, RUSSIA

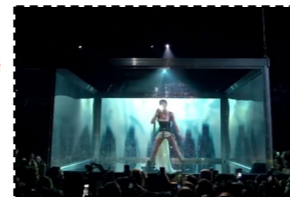
ROLLS ROYCE X HARRODS, UK



MICROSOFT, SPAIN



QATAR AIRWAYS, JAPAN



MTV EMA'S, SPAIN



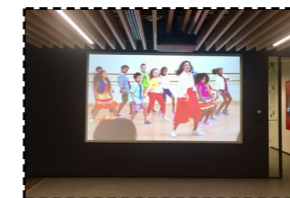
DUBAI MALL, UAE



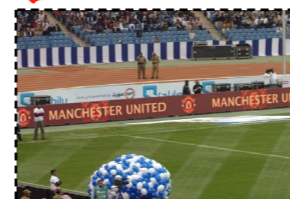
MONT BLANC LAUNCH, HONG KONG



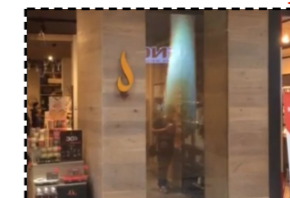
ENCAPSULATED AFRICA, KENYA



GAP, INDIA



MAN. UNITED V AL HILAL, SAUDI ARABIA



DUSK, AUSTRALIA

OUR PRODUCTS

Pro Display has been designing and developing optical screen technologies for the last two decades. We are an award winning British manufacturer, offering a unique and innovative range of products, ideal for a wide variety of industry applications across numerous global markets.

SPECIALIST OPTICAL PROJECTION SCREENS

Our specialist optical projection materials include both rigid screens and self adhesive films for front, rear and dual projection applications. Pro Display's screen technologies have been designed to work in some of the most challenging environments and offer superior brightness, contrast and resolution in high ambient light, daylight and even direct sunlight.

Products include Large Format Projection Screens up to 8 x 3 metres, Ultra Short Throw Screens, Sun Readable Projection Screens, Switchable Projection Screens and projection screens with Surface Sound Technology.

MIRRORED SCREEN TECHNOLOGY

Our mirrored screen technology, Mirrorvision® includes smart TVs, advertising screens, retail displays, rear projection screens and retrofit glass overlays to fit any type of LCD/LED monitor.

ANTI-GLARE SCREEN SOLUTIONS

We offer Anti-Glare Screen solutions for monitors, video walls and large format displays. These are available as a glass or acrylic overlay or as self adhesive film which can be retrofitted to any screen to protect the image in high ambient light/daylight.

SPECIALIST LCD/LED SCREENS

Our specialist monitors include screens with built-in media players, High Brightness Screens, Outdoor Screens, Kiosks, Transparent LCD Screens and Touch Screen Monitors.

TRANSPARENT LCD/OLED TECHNOLOGY

Pro Display provides a complex range of Transparent LCD Panels and Display Cases with screen sizes ranging from 7"-98". This includes our frameless 55" Transparent OLED Display which does not require a backlight or enclosure. We also design and manufacture custom housings and bespoke furniture with integrated transparent screens for all types of industry applications.

LARGE FORMAT LED DISPLAYS

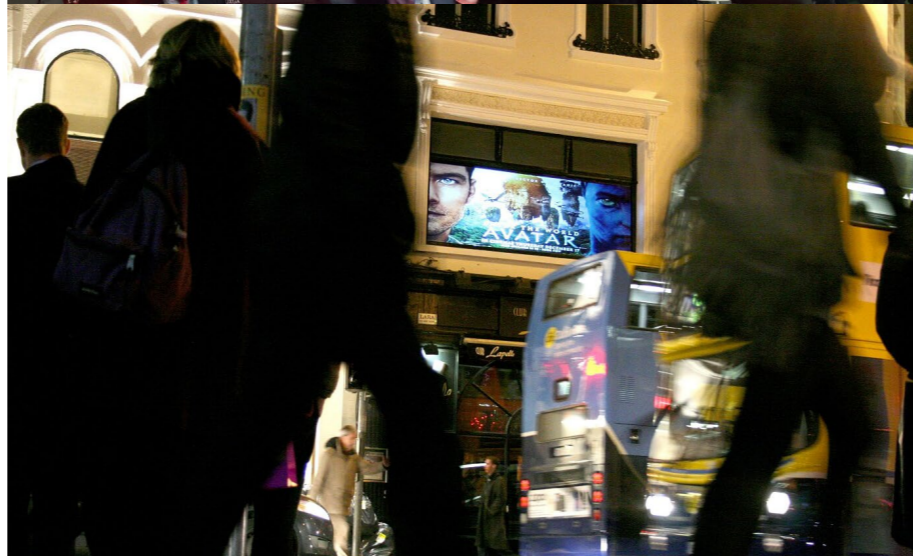
Pro Display are experts in Large Format LED Displays, including a complete range of indoor and outdoor modules with high resolution displays starting at 0.9mm pixel pitch.

CUSTOMISED SCREEN SOLUTIONS & HOUSINGS

Our unique ability to design/handcraft custom screen solutions and housings gives us greater flexibility to meet our customers needs.

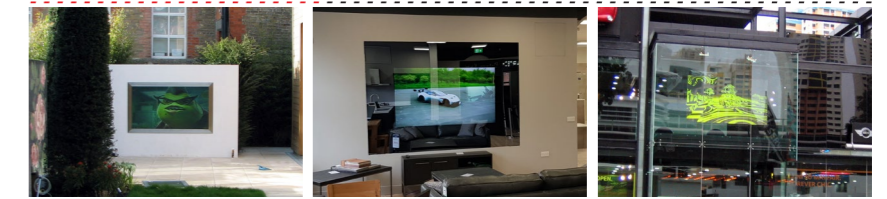
SURFACE SOUND TECHNOLOGY

Surface Sound Technology includes a range of flat-panel Canvas Art Speakers and a Soundpod transducer which turns any surface into a loudspeaker.



TYPICAL APPLICATIONS

GENERAL AV



DIGITAL SIGNAGE



LEISURE



VISITOR ATTRACTIONS



BROADCAST



CORPORATE



GLOBAL PRESENCE & PARTNERS

Having been specified on some of the largest and most ambitious projects the AV industry has seen to-date, Pro Display products can be found all over the world.

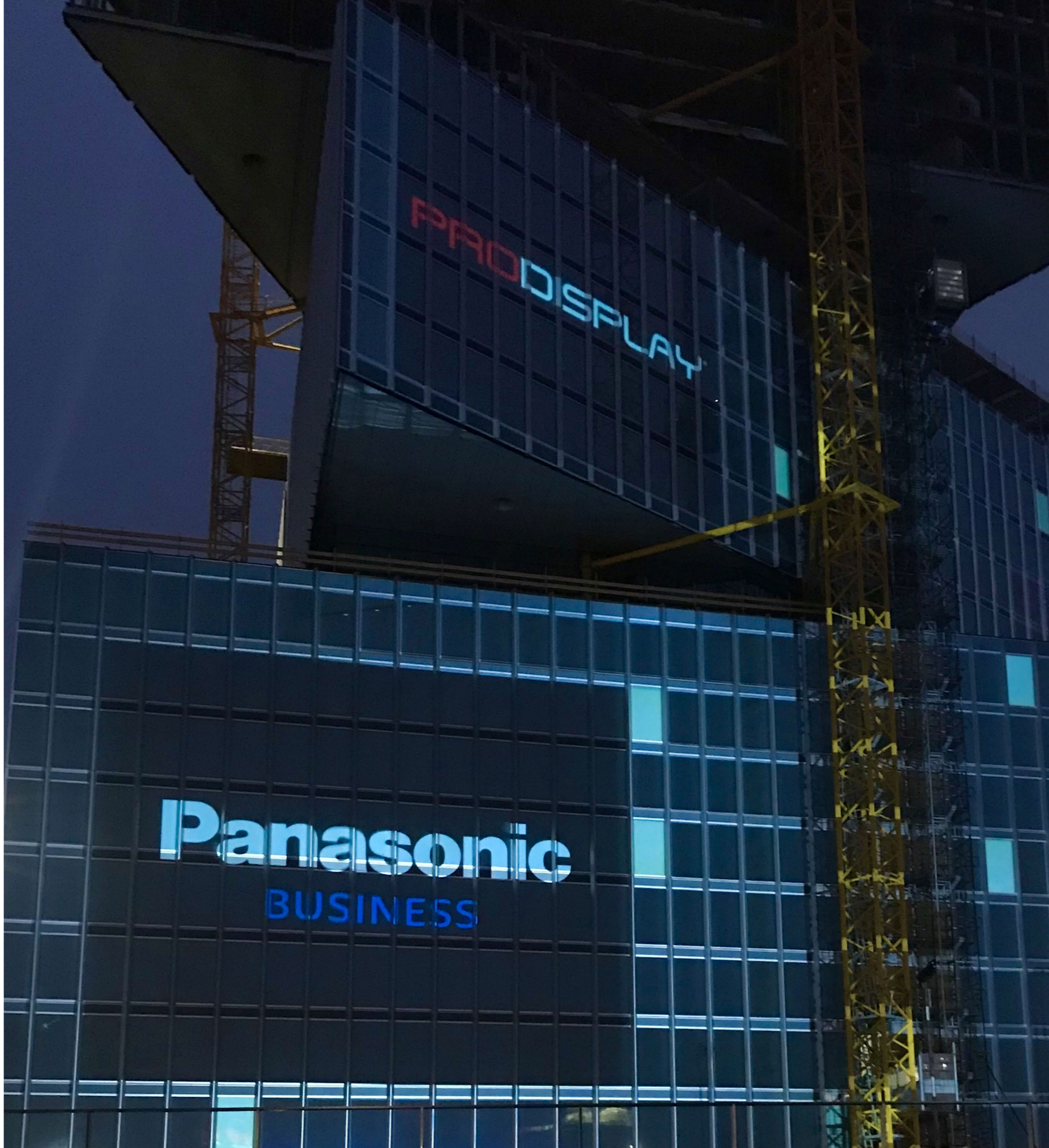
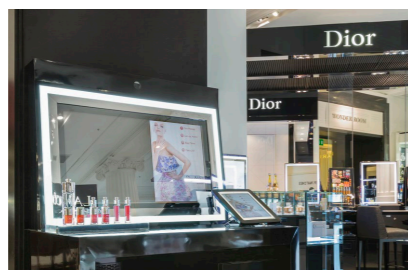
Our vast partner and reseller network allows us to support businesses in the global marketplace; from working alongside Panasonic in showcasing their latest projectors, to facilitating the requirements of the ISE AV technology trade show, many of Pro Display's products offer the opportunity to showcase or present yourself in the best possible way, making us an ideal partner for any business.

DID YOU KNOW?

It's very likely that you have seen Pro Display products in action in Hollywood blockbusters, like Prometheus, Guardians of the Galaxy and Star Trek, on TV shows, like Sky Sports, Grand Designs and Extreme Makeover, or even whilst shopping in your local high streets and malls.

HIGH PROFILE PROJECTS

Pro Display have been involved in a variety of high profile and award winning projects that have firmly cemented us as leaders in the AV industry. We are proud to have a strong portfolio of products that have enjoyed centrepiece exposure to millions of people.





ACADEMY AWARDS

CLEARVIEW HOLOGRAPHIC PROJECTION SCREEN

Bringing their vision to life required a huge number of creative and technical partners, managed by the dedicated Art Department team – Pro Display was one of those partners.

The stage set of the Oscars included 38 Pro Display Clearview Holographic Screens, providing a versatile blank canvas (transparent even!) on which the stage designer could create their show, without the projection screens ever getting in the way.

One very special holographic screen was reserved for the return of comedy legend Bob Hope, hosting the awards once again, as he did at the first ever televised Oscars back in 1953.

In a memorable and unique moment, Billy Crystal introduced a digital projection of Bob Hope from that landmark TV broadcast.



“We would like to thank you for all of the hard work and effort that you have put into this year’s show. Your contributions helped ensure the success of this year’s Oscars. We could not have done it without you.”

- Art Department of the 83rd Academy Awards



DID YOU KNOW?

Pro Display won the ‘Live Event of the Year’ category at the International AV Awards for the Academy Awards stage set.

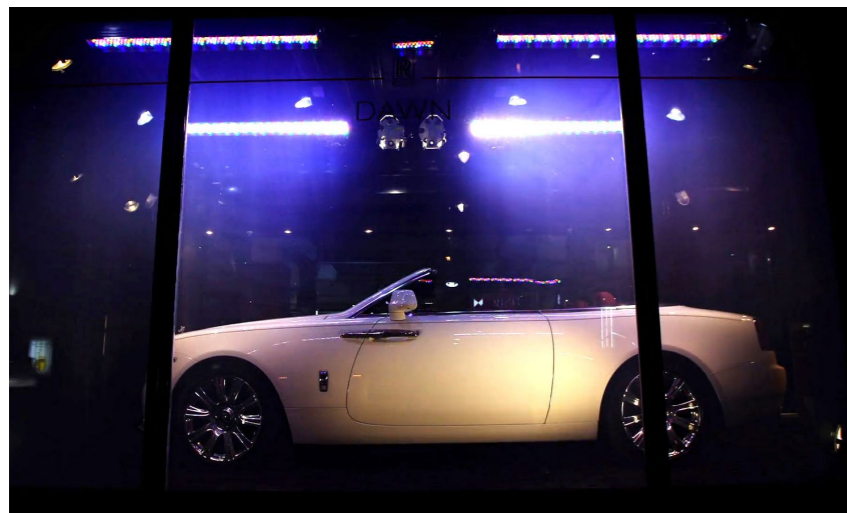
ROLLS ROYCE DAWN LAUNCH, HARRODS

SELF-ADHESIVE SWITCHABLE FILM WITH PROJECTION

Self-Adhesive Switchable Smart Film featured in the high-profile reveal of the new Rolls Royce Dawn Drophead Coupé. In its frosted state it makes an excellent high definition projection surface, and the outstanding switching reliability of the smart film enabled the client to keep the film fading gradually from frosted to clear, repeatedly throughout the day.

Four large sheets of our smart film were precision cut to the dimensions of the 10 square metre window at Harrods. During the Christmas period, the intriguing countdown was projected onto the window, attracting passers-by and building anticipation of the big reveal.

Crowds gathered regularly outside the window as the countdown ended, watching the smart film turn smoothly from frosted to clear, revealing the Rolls Royce Dawn behind the glass. Then the windows gently frosted, darkened and the countdown to another new dawn began.





TOUGH HELMETS TO EXPLORE

UNIVERSITY OF SOUTH CAROLINA

PROFESSIONAL MIRRORVISION DISPLAY WALLS

We supplied several custom made large 86" Professional Mirror Screens, from our Mirrorvision® range to integrate within the bespoke Interactive Mirrored Wall System.

The centre was built to tell the story of Gamecock Football and their achievement, spirit, tradition, and value, with different themed zones throughout to take visitors on an interactive journey through time.

The role of our technology was to showcase the Gamecock team's practice of producing top NFL talent in a hi-tech, sophisticated manner.

The area is dedicated to the success stories of their alumni, a showreel of their achievement plays continuously, with a football helmet mounted on the wall for every National Football League team a previous student has gone on to play for.

Our mirror screens were used as a means to connect physical and digital displays, each wall-mounted helmet became a window of opportunity to learn more about Gamecock Football's hall of fame.



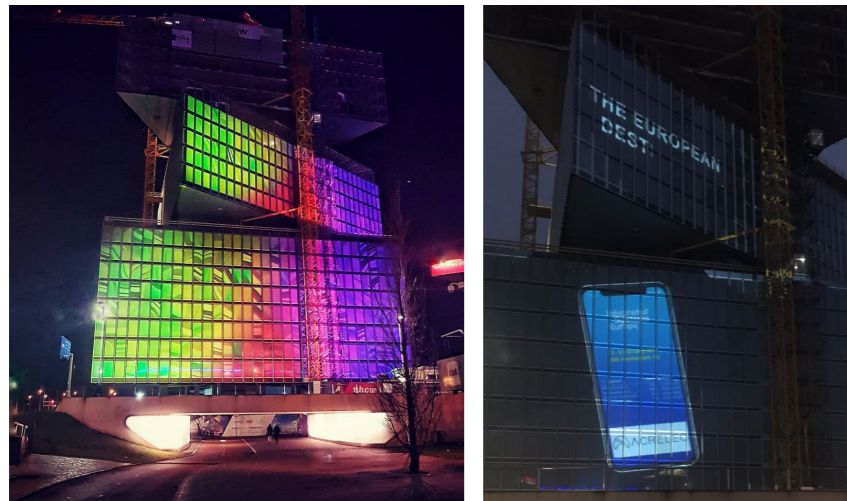
INTEGRATED SYSTEMS EUROPE

PROJECTION MAPPING FILM

The Projection Mapping Film is a removable dry application self-adhesive film that enabled the windows on the nhow Amsterdam RAI Hotel to receive and display the content being projected onto them.

Our specialist film was an essential component in this window projection system in order to combat the glare and lack of image reproduction that standard glass would produce when being projected onto.

Pro Display's film offered the right solution to a very challenging aspect of the project - how to create a multi-storey projection screen that spans across 392 windows on an irregularly shaped building. The architects of this project were given an easy solution to the complicated technical issues by using Pro Display's Projection Mapping Film, which provided a projectable surface that was able to be installed via the interior of the building.



"For the duration of the exhibition, attendees were treated to a daily showcase of projection mapping imagery that made use of the building's unique profile. This was interwoven with constantly updated exhibition highlights and previews, projected onto two stories of the new hotel. It literally stopped the traffic! It was a real team effort and encapsulated the creative application of the latest technologies and production solutions to form a unique experience. We really appreciated the dedication and skills shown by all of our partners - as did over 80,000 attendees at ISE 2019"

- Mike Blackman, Founder of Integrated Systems Europe

Integrated
Systems
Europe





DUBAI MALL

DIGITAL GLASS REAR PROJECTION SCREEN

The Chalhoub Group were seeking a single screen solution for their luxury shoe store, Level Shoes in Dubai Mall, to display high quality content, without the usual join lines that are so often seen on traditional video walls.

Pro Display rose to the challenge by supplying our extraordinary optical screen technology for ultra-short throw rear projection applications - Digital Glass.

Digital Glass is a specialist screen that displays incredibly high-quality images. Manufactured using a unique process that coats our advanced proprietary optical projection layer directly onto ultra-clear glass or cast acrylic.

Digital Glass is a cost effective large format 4K Ultra HD screen that is specifically designed for ultra short throw applications, allowing it to be used in areas where space is limited and at a premium.



"Clients come to us because they know we source the very best equipment possible for the solutions we design and choosing to work with Epson and Pro Display for a project like this was therefore a natural choice. Quality and performance have always been our criteria when choosing our technology partners."

- David Fell, Director of Eclipse Installations

ECHO⁸ level
SHOES

DID YOU KNOW?

Pro Display have a partnership with Digital Projection, a pioneering manufacturer of digital imaging solutions, supplying their Experience Center in Dubai's Silicon Oasis with 3 projection screens used to showcase their visual effects hosting high profile clients and potential customers.

NOW GALLERY

HIGH GAIN REAR PROJECTION FILM

NOW Gallery in London, required 3 pieces of 4.6m x 2.15m High Gain Rear Projection Film to be installed in a portrait format onto their exterior facing glass façade.

Using these screens, NOW Gallery are able to project images with breath-taking clarity and 4K resolution; producing sharp pictures with inherently high brightness and optimum contrast, just the result required from an art gallery where display truly is the 'name of the game'.

Our projection film paired with an E-Vision 4K Laser Projector with 7500 lumens brightness and 0.8 lens per screen, NOW Gallery are able to project chosen content such as videos or images, enabling our high gain film to serve a number of functions.

For example, where the screens are placed offers NOW Gallery a fantastic opportunity for promotion, providing them with what can essentially serve as large advertising screens in a prime location to ensure maximum impact on passers-by.

Installing such screens in this location makes for incredibly versatile fixtures that can be used for whatever advertising purposes required, from promoting events and special offers, providing information or simply to just advertise an upcoming or ongoing exhibition.



“High Gain Film enabled NOW Gallery to have large, sharp, moving images with definition and quality on our gallery windows. The contemporary dancers are projected onto the film and come alive on the outside of our gallery which is all made of glass. We couldn't have hoped for a better effect.”

- NOW Gallery

NOW
GALLERY





HISTORY

For over 15 years, Intelligent Glass has been developing its own range of patented switchable smart glass technology, with thousands of panels installed all over the world.

As a British manufacturer dedicated to quality and reliability, the products manufactured by Intelligent Glass are designed to offer instant and controllable privacy. Based on the latest polymer dispersed liquid crystal (PDLC) technology, Switchable Smart Glass operates using a simple ON-OFF system, switching the glass from frosted to clear at the press of a button, acting as a remote 'blind' that assists with privacy, security, energy concerns and style.

Unique to the market, Intelligent Glass also offers a proprietary Self-Adhesive Switchable Film that can be retrofitted to existing windows and partitions.

The applications for switchable technology grow each day, and Intelligent Glass has been a part of some of the most creative and exciting installations the industry has ever seen.

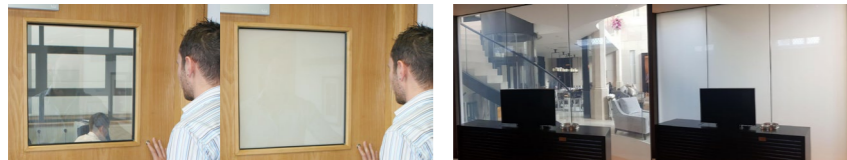
From award winning architectural projects, to unveiling the world's most luxurious cars, we have seen switchable technology work well in an extremely wide range of environments, including but not limited to homes, hotels, offices, healthcare, retail, hospitality, transport and much more.

INNOVATION

Since the early 2000's, Intelligent Glass has been refining and perfecting the switchable technology range we have to offer.

Our Research & Development team have helped to develop both existing and new technologies, from improving our manufacturing processes, to creating innovative products such as Self-Adhesive Switchable Film and Battery Powered Switchable Vision Panels.

Our dedication to continuous improvement reflects the care we take over the manufacture of each and every product we supply.



DID YOU KNOW?

In order to maintain the strictest quality standards, Intelligent Glass has CE approval and it's own patented production procedures, with every piece of switchable glass manufactured in a 'Clean Room' environment and rigorously tested before dispatch.



OUR PRODUCTS

Intelligent Glass manufactures and supplies one of the widest ranges of Switchable Glass & Film products to numerous industries around the world, with a guarantee of quality, reliability and optical clarity that's over 15 years in the making.

This complete and unique range of patented Switchable Glass products, includes a number of specialist and bespoke solutions.

SINGLE GLAZED SWITCHABLE GLASS

Single Glazed Switchable Glass is our most popular option worldwide, offering a cost effective solution where the liquid crystal switchable layer is coated down directly onto the glass surface.

Using our patented technology, this glass is ideal for both privacy and projection applications. Multiple panels can be joined together to create glass partition walls and large format video wall solutions.

LAMINATED SWITCHABLE GLASS

Laminate Switchable Glass is where the switchable layer is bonded between two sheets of glass, making it a safer option for both high traffic areas and wet areas e.g. bathrooms, hospitals, clean rooms etc.

This durable technology replaces the need for old fashioned blinds or curtains, offering greater control and comfort within any room.

DOUBLE / TRIPLE GLAZED SWITCHABLE GLASS

Double / Triple Glazed Switchable Glass utilises a warm edge spacer bar with an argon filled air gap in between to offer greater insulation and performance.

Depending on requirements we can offer a variety of glass options e.g. low iron, low E coatings to provide the most efficient DGU/IGU panels on the market today.

SELF-ADHESIVE SWITCHABLE FILM

Self-Adhesive Switchable Film is designed to retrofit to existing glass or other transparent surfaces, it provides a simple and cost effective alternative to other switchable technologies. It is manufactured with a self-adhesive cling layer on one side, making it easy to apply to both new and existing glass.

For large windows and glass walls, the film can be joined to create a switchable surface for both privacy and video projection applications.

VISION PANEL DOOR SYSTEM

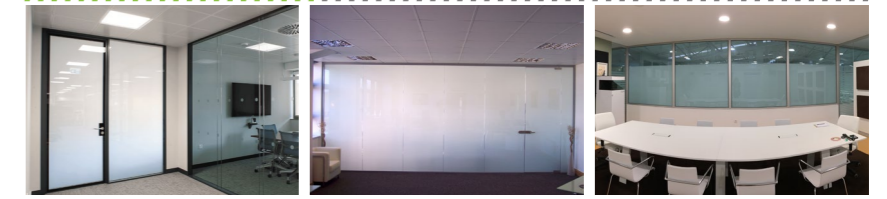
Vision Panel Door Systems allow discreet visibility into (or out of) a room at the push of a button. The ideal solution to check a room without the need to disturb its occupants.

Powered by a replaceable AA battery pack, concealed within the door, our Switchable Vision Panels work independently of mains power.

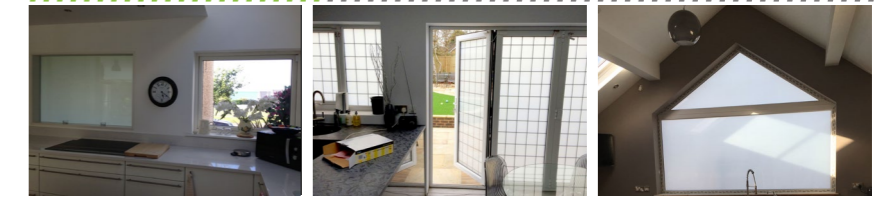


TYPICAL APPLICATIONS

COMMERCIAL INTERIORS



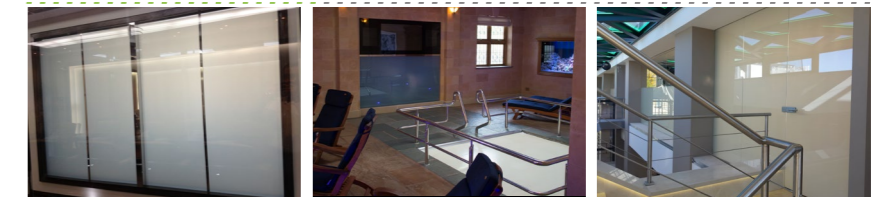
RESIDENTIAL (HOME)



HEALTHCARE



HOSPITALITY



RETAIL



MARINE, AUTOMOTIVE & TRANSPORT



SPECIALIST PRODUCTS

The Research and Development team at Intelligent Glass works tirelessly with a number of key industry partners to come up with a new and ever increasing range of specialist solutions using our unique patented technology. Whatever your vision or application, we ensure the highest level of quality and compliance to meet your every need.

COLOURED SWITCHABLE GLASS

Intelligent Glass has developed a number of manufacturing processes to add colour to switchable glass, including laminating with coloured resins, applying dyes within our specialist coating process and creating coloured/tinted smart films perfect for privacy, partitioning and projection applications.



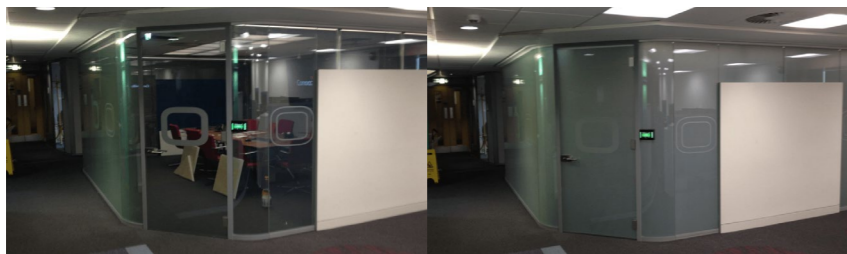
SOUND INSULATING SWITCHABLE GLASS

For environments that necessitate audio privacy, this technology provides you with the ability to provide sound insulation without having to compromise on visual privacy, style or effect.

CURVED SWITCHABLE GLASS

Curved Switchable Glass offers the potential for a switchable solution that fits virtually any interior design aesthetic or style, offering the effective use of curved glass as a design feature without having to compromise on premium privacy.

This solution is available as a laminated safety glass or retro-fit product using our Self-Adhesive Switchable Smart Film.



FIRE RATED / RESISTANT SWITCHABLE GLASS

Fire Resistant Switchable Glass will help you meet fire safety regulations whilst maintaining the stylish and modern environment you are looking to achieve. We collaborate with Pyroguard for this product, adding switchable capability to their fire rated safety glass. This solution is available as single glazed, double glazed or laminate glass.



SPECIALIST APPLICATIONS

SWITCHABLE GLASS FOR PROJECTION



SWITCHABLE GLASS FOR FLOOR PANELS



SWITCHABLE GLASS FOR VEHICLES



DID YOU KNOW?

Many Intelligent Glass products can be integrated with automated control systems, furniture, product displays and even infrared touch frames to give them touch capability.

NUMBER 23

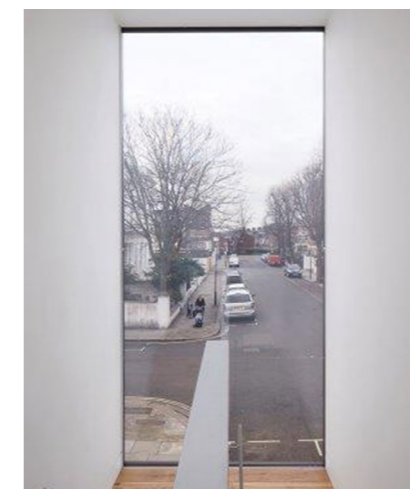
Number 23 is a multi award-winning family house constructed on a vacant end-of-terrace site in West London.

The signature 'floating box' window on the front elevation is enhanced through the use of Intelligent Glass Switchable Panels, turning from frosted to clear at the press of a button.

The simple frontage conceals a house that is 30% bigger than its neighbours, despite occupying a 20% smaller plot. Although the design has a distinctly playful tone, its architectural intentions are serious, it's designed to demanding Code 4 Environmental Standards.

Intelligent Glass' Toughened Switchable Smart Glass technology brings light into every room in the house, whilst providing instant privacy whenever it's needed. At night time, with the internal lights on and the switchable panels in opaque mode, a warm diffuse glow is cast to the street outside.

Such generous glazing means that daylight fills every room in the house, even the basement, and is complemented by a combination of rooflights and sunpipes.



MERCEDES WORLD

Mercedes have turned to multiple applications of Switchable Glass in recent years, mainly focused around the customer experience and customer journey. Car showrooms in particular can benefit from such technology by using it to express scale and quality. For example, by installing a panelled Switchable Wall in the showroom, salespeople are able to use it as a tool to aid the sales process.

Hiding a car behind such a wall offers them the chance to truly 'wow' their customers, putting the first impressions of the sales team, as well as the car, in the best possible light. Unveiling a car to a customer after purchase or upon collection is also a nice touch, building anticipation and again, putting the customer in a positive frame of mind, with the customer experience serving as a representation of the quality of the product purchased.

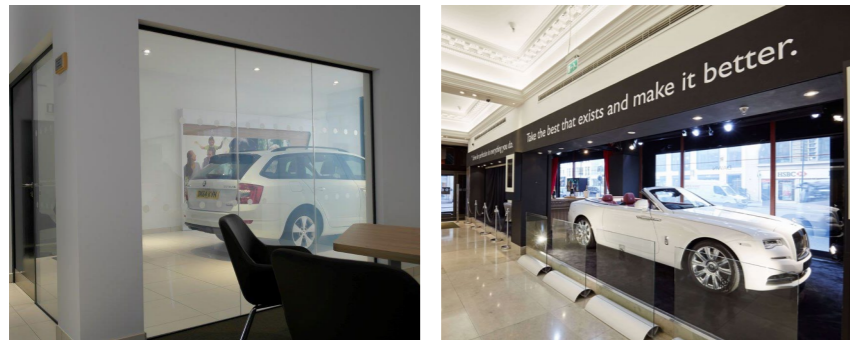
Mercedes have also pioneered Switchable Glass in the automotive industry as part of an innovative and engaging information display. Using switchable technology in this application serves various uses, maximising the effectiveness of the investment, by utilising some of its multiple features.



DID YOU KNOW?

A number of other car manufacturers including Rolls Royce, Aston Martin, McLaren, BMW and Jaguar Land Rover have also used Intelligent Glass panels at their factories, showrooms, product launches and global exhibitions.

This hi-tech solution not only offers privacy and security, but greater visual impact in any number of car industry applications.





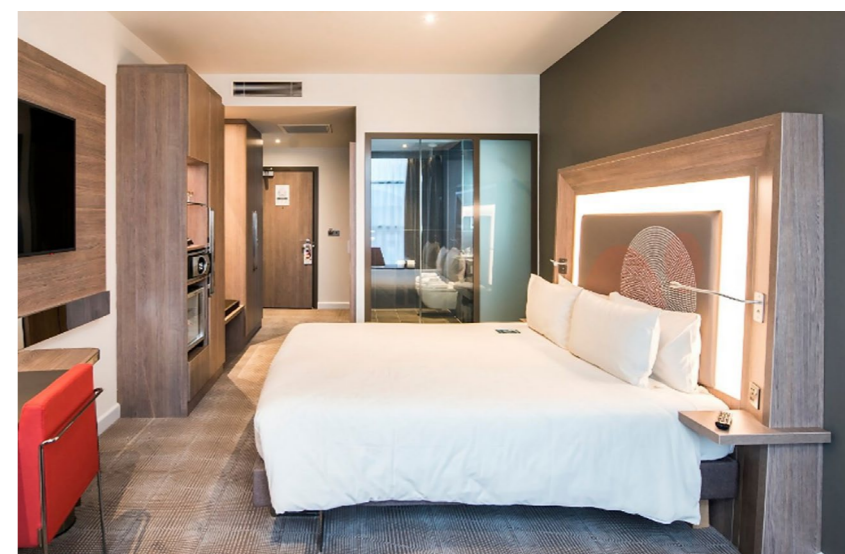
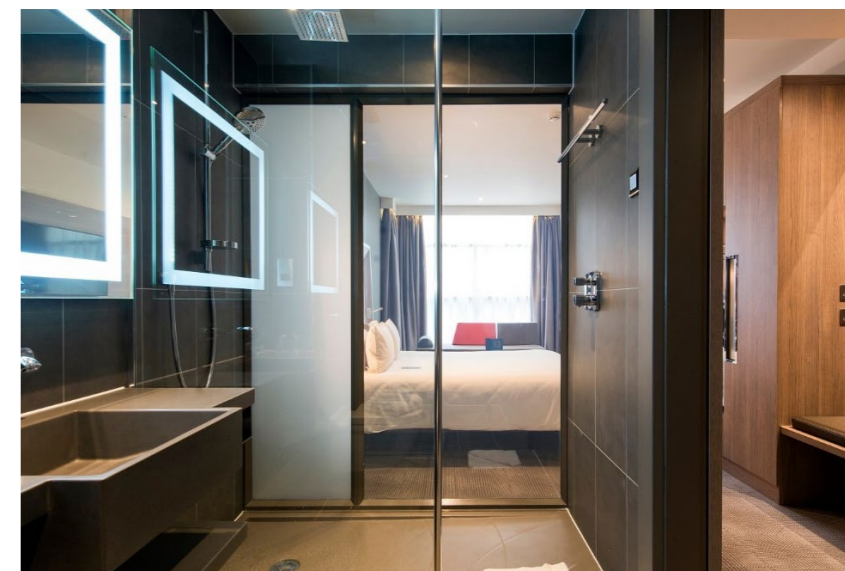
NOVOTEL

At one of their 'key' London locations, a large investment Novotel made was in Laminated Switchable Glass, a complete privacy solution from Intelligent Glass that integrates switchable technology into safety glass in 136 rooms of this illustrious hotel.

The Laminated Switchable Glass installations is a versatile and awe-inspiring solution to shower/bathroom privacy; this glass option is ideal for high traffic areas, bathrooms, bedrooms, meeting rooms and bars/resteraunts within the hospitality industry.

Each Switchable Glass Partition is controlled via a wireless remote control, giving the guests instant privacy and security at the push of a button. The way Novotel used this technology offers customers controllable and stylish privacy that still allows ambient light from the bedroom to spill into the bathroom.

Installed as a room dividing partition, designers were able to maximise the benefits of the space by facilitating a luxury bathroom area without blocking light from the rest of the room, creating an open and bright feel in a space that may otherwise feel dark and small when using traditional wall solutions.



NHS

Helping to revolutionise the way patients are treated, Switchable Smart Glass assists a health care facility to improve the patients experience, helping them feel cared for and safe in the knowledge their privacy is a top priority.

Intelligent Glass have supplied switchable technology to a number of NHS hospitals and clinics including this project at an NHS Hospital in Paisley, who had 42 panels of 12mm Laminate Switchable Glass installed into 5 of their critical patient areas on their ICU ward.

We boast a solid reputation for the quality of our products; being world renowned for the impact of our research and development and offering the very best manufacturing facilities possible, ensuring that the solution delivered for this project is not only effective for the requirements, but also offering long lasting service and the best of British manufacturing quality.

The technology was used to great effect, allowing healthcare professionals to offer cutting-edge and practical privacy to patients whilst still being able to monitor them visually without having to disturb them. Other key factors of using Switchable Safety Glass is the security and sterile nature of the glass, which is easy to clean and maintain.





RUSKIN SCHOOL OF ART

Being chosen to take part in an ambitious project on behalf of one of the UK's leading art schools is a true testament to the capabilities of switchable technology from Intelligent Glass.

This project, commissioned by Ruskin School of Art, specified by Spratley Studios, is no standard privacy application, applying an inventive spin on its projection capability, as you would expect from the Fine Art Department of The University of Oxford. Serving as the hub for some of the most creative minds of a generation, certain demands from such an environment are of course to be required.

Ruskin School of Art clearly understand this, as their application of our switchable film is not only creative, but it is also effective, both inspiring for students and raising awareness of their prowess in art- this project is one that offers so much more than the basic functionality of Switchable Glass.



DID YOU KNOW?

Our Switchable Glass was used to create working aquariums for a touring art exhibition. There are so many uses of switchable technology, serving as an incredible tool for artists, with the only limit being their imagination.



HISTORY

intouch™ is Pro Display's touchscreen division, established with a focus on providing a cost effective range of interactive products for a wide variety of global markets. We have been designing and developing our own range of touch screen technologies for more than 10 years, innovating products based on two specific interactive technologies – Projected Capacitive (PCAP) and Infrared (IR).

As touchscreen technology increases in importance in our daily lives, intouch™ will be there, fulfilling its mission of offering affordable and effective interactive technology to a worldwide audience. We push the boundaries of what is expected from touchscreen technology in our products - from our interactive Transparent LCD/OLED Screens, to our Interactive Mirror Screens, our range of intouch™ products are always sure to impress.

Be smart... Get intouch™.

TOUCH TECHNOLOGY

PROJECTED CAPACITIVE TOUCH

This product is available as either a flexible foil or rigid glass panel and is ideally suited to through glass touch applications which includes Outdoor Kiosks, Touch Tables and Advertising/Information Displays in store windows. We offer both single/dual touch and multi-touch solutions (up to 40 touch points).

Products include – Interactive Rear Projection Foils, Clear Interactive Foils, Interactive Glass Overlays, Interactive Mirrors, Interactive Tables, Transparent LCD/OLED Displays, Outdoor Kiosks and High Brightness Touch Screens.

INFRARED TOUCH

This multi-touch technology is available as 6, 12 and 32 point touch and offers excellent touch accuracy and fast response times making it ideal for high resolution displays. Designed for internal applications on kiosks, monitors, video walls, projection screens & whiteboards.

Products include – Retrofit Interactive Frames, Multi-Touch Projection Screens, Large Format Rear Projection Screens, Touch Screen Monitors, Interactive Whiteboards, Transparent LCD Touch Screens, Mirrored Interactive Displays, Interactive Glass Overlays and Interactive Kiosks. We also offer large custom sizes and IP rated frames for outdoor applications.

DID YOU KNOW?

The Pro Display Group offers some of the world's largest interactive solutions with Custom Touch Screen Overlays up to 500" diagonal in size.



OUR PRODUCTS

intouch™ offer a very wide range of products ideal for many touchscreen requirements. The solutions we provide are versatile and affordable, designed for new installations or retrofit applications.

SINGLE, DUAL & MULTI-TOUCH FOILS

We produce Single, Dual and Multi-Touch Projection Foils that transform any glass/acrylic panel or store window into an Interactive PCAP Touch Screen display.

We also offer Single, Dual and Multi-Touch Foils for LCD and LED Monitors, these are ideal for integration within POS displays, kiosks and window display solutions.

INTERACTIVE OVERLAYS & TOUCH FRAMES

Our Single, Dual and Multi-Touch Glass Overlays transform any existing LCD/LED Screen into an Interactive PCAP Touch Display. Ideal for integration within POS displays, kiosks, gaming or table top applications.

Our touch frames come in a range of standard sizes and convert any existing LCD/LED or projection screen into an IR Multi Touch Display. We also provide large and custom sized frame solutions to enable interactive capabilities for larger scale projects and video walls.

INTERACTIVE PROJECTION SCREENS & MONITORS

intouch™ offers a wide selection of Interactive Projection Screens and Monitors with various touch options. This includes High Brightness Displays, IP Rated Outdoor Monitors and a complete range of Transparent Screen solutions (OLED, LCD and LED).

We also offer a range of kiosks for both indoor and outdoor applications (various sizes) with portrait and landscape orientation.

INTERACTIVE MIRRORVISION® DISPLAYS

Our Interactive Mirrored Displays come in a range of shapes and sizes, from standard size overlays (perfect for existing screens) to huge Interactive Mirror video Walls. Our Mirrorvision® range is perfect for retail, hospitality and entertainment applications.

INTERACTIVE TOUCH TABLES

intouch™ manufactures a range of both standard and bespoke Touch Tables, custom made for different industry applications. Screen sizes range from 22"-86" and their operating systems and features can be customised to meet specific customer requirements.

INTERACTIVE FURNITURE

intouch™ can design and manufacture a range of bespoke furniture incorporating our interactive display solutions. Whether you are looking for a custom Interactive Display for your corporate office, retail store, visitor attraction or exhibition/event, we can provide the right solution for whatever you have in mind.

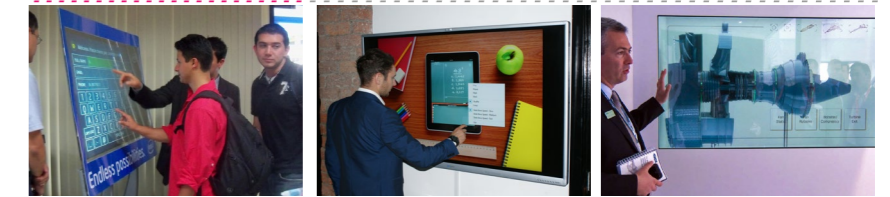


TYPICAL APPLICATIONS

RETAIL



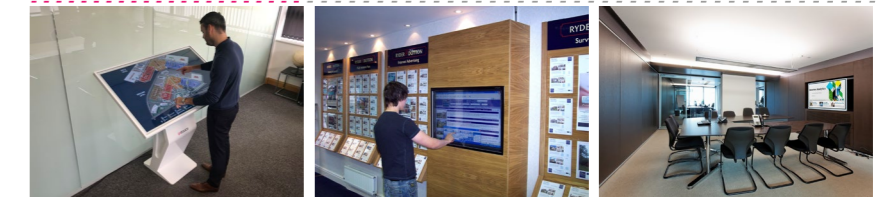
EDUCATION



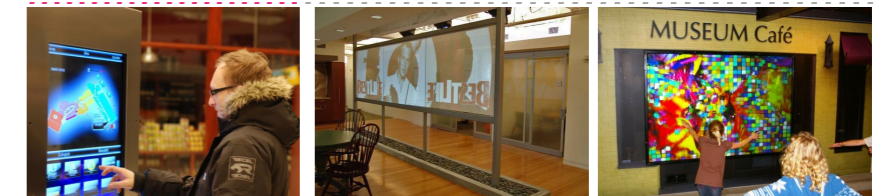
EVENTS / EXHIBITIONS



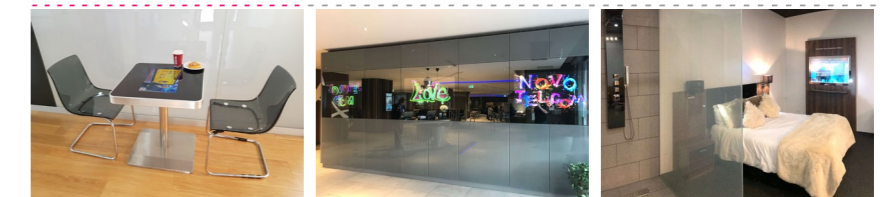
CORPORATE / COMMERCIAL INTERIORS



VISITOR ATTRACTIONS



HOSPITALITY



NIKE

INTERACTIVE MIRRORVISION® RETAIL DISPLAYS

Our Interactive Mirrors are used to deliver the right fit for women shopping at NikeTown London. These Mirrorvision® displays deliver the right information at the right time, as shoppers are trying on the product.

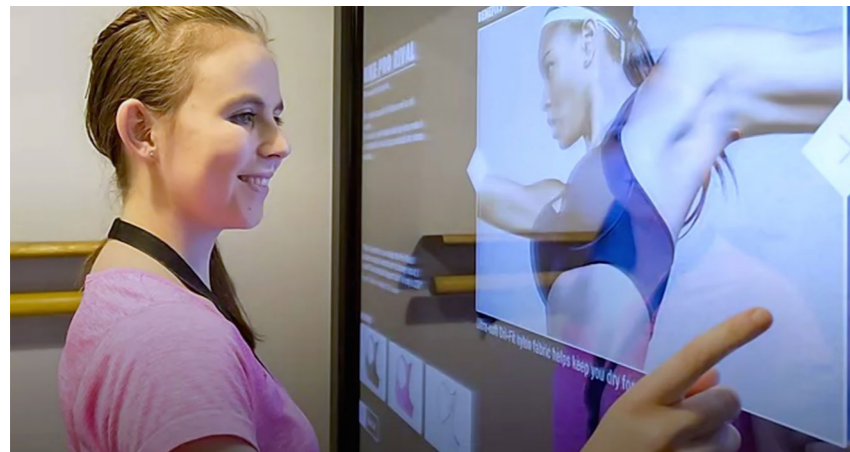
Due to the high amount of traffic going through this space, our screens are toughened during the manufacturing process in order to meet health and safety standards.

Customers use the screens to browse through Nike's range of products and discover how each item benefits different workouts. They can also scroll through the full range of colours available and view advice from women who have first hand experience with each item.

Shoppers could also use the Mirrorvision® screens to view class times for Nike's free run and training clubs, encouraging a sense of community and creating a completely unique shopping experience.

This versatile solution wows your customers, as well as making the most out of the wasted space that standard mirrors take up. A popular choice for clients looking for digital signage with a difference, our mirror advertising screens are mirrors that come to life.

These displays are extremely popular within retail environments with other applications including 'point of sale' displays and as an attractive upgrade to any existing standard digital signage solutions.



SKY SPORTS

INTERACTIVE GLASS OVERLAYS

Sky Sports News made particular use of a full screen solution, wanting commercial grade screens with Capacitive (PCAP) Touch Glass Overlays. The idea was to create interactive presentations that they can use to show a range of information such as match results, league tables, transfer details and any other sports related data, which would bring valuable content to their audiences.

When the screens are being used, the presenter is able to interact with the information that is being displayed in a way that is responsive to the live nature of news presentation.

This means that not only does the presenter have full control over what is being displayed at the time, it also allows for them to plan ahead on-the-spot, should they be required to.

To achieve an ultra thin bezel, they decided on the intouch™ Projected Capacitive Touch Technology which was custom designed for Sky's screens. 32", 55" and 75" Sky Pads were implemented using commercial grade displays designed to work 18 hours a day, 365 days a year.

The toughened glass overlays are manufactured with a permanent or removable fix for installation directly to the screen bezel / frame. Simply retrofit an Interactive Touch Glass Overlay to convert existing screens into multi-touch interactive displays.



"Because every part of the newsroom is part of the studio, the screens would be seen from 360°, so infrared technology was not going to be the best choice. They are affected by studio lighting, which is fine if the screen is in a fixed position, but we have three Sky Pads (touch screens) in the newsroom, all being twisted around, and it had to work as a screen from any direction."

- Mike Ruddell, Head of Technology at Sky Sports



LLOYDS BANK

INTERACTIVE VIDEO WALL

This eye-catching Interactive Video Wall consists of six 55" Full HD (1080p) screens, with a Large Format Interactive Touch Frame built into a custom designed housing for Lloyds Bank at Clapham Junction, London.

The video wall was used as a multi-functional display, firstly providing a warm welcome to branch visitors with quirky features like the weather forecast for the day. However, its main function is to show visitors the house prices in nearby streets and to get property buying tips, allowing users to interact with the video wall differently to create a completely unique experience for each individual user.

An Interactive Video Wall is a powerful display option that sees your message or information displayed larger than life! As a culmination of several screens, an Interactive Video Wall display offers an effective way to serve your content with serious 'wow' factor on a scale not usually seen by audiences.

The beauty of Interactive Video Wall technology allows you to offer engaging and effective interactive displays for your audience, especially when compared to a traditional video wall. A touch screen fascia gives your audiences that extra level of control over the content they are being shown, literally putting the control into their hands.

Traditional video walls generally offer a passive experience for the viewer, one that audiences can only interact with visually. With an Interactive Touch Screen Video Wall, however, audiences are drawn to the scale as well as the functionality, making this a very effective display.





Platinum Vision®

HISTORY

Platinum Vision® is a new division for Pro Display and focuses on creating 'Smarter Integrated Technology' for the home and business. Pro Display has combined its amazing design skills and innovative technologies to launch a cutting edge range of bespoke visual display solutions.

INNOVATION

This new interiors range offers a number of unique, hand-crafted pieces of furniture, products and customised display solutions, that will become an integral part of the design of your home, office or retail display.

Platinum Vision® is for those individuals and organisations who dare to be different and show their own design flair and individuality in a world where image has become a way of life.

Call for details today and 'Share In Our Vision'.

DID YOU KNOW?

Platinum Vision® furniture can be custom designed and is now available in a variety of colours and finishes including textures and graphics/logos.

You, the customer, can be as creative as you like.



"CUTTING EDGE TECHNOLOGY"

"DARE TO BE DIFFERENT"

"DARE TO BE UNIQUE"

THE SCREEN GALLERY

“Experience the visual wonder of Pro Display, feel the magic of intouch™ and control the power of Intelligent Glass®.”



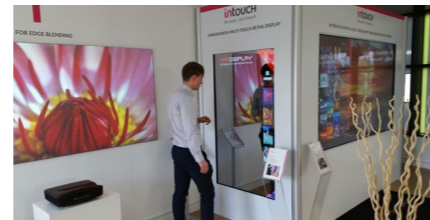
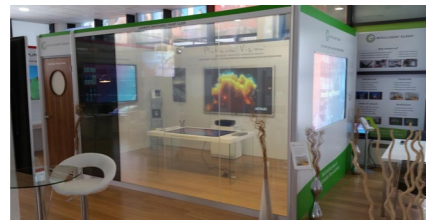
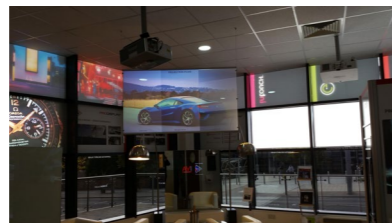
As our very own ‘screen innovation centre’, you can visit our Screen Gallery in Wakefield to see some of the most advanced screen technologies the world has to offer.

We understand that when you’re looking to buy a piece of technology like ours, quality is of the utmost importance. We have a complete range of products on display for you to explore at your own pace, for your own reassurance.

Get hands-on with our range of intouch™ touch screen technology, witness the magic of Switchable Glass, lose yourself in our vivid LCD screens and experience the impressive features of our specialist projection screens.

Conveniently located directly opposite Wakefield Westgate train station, you can easily get to The Screen Gallery using a variety of transportation methods, with convenient parking nearby.

Call and arrange your visit today!



DID YOU KNOW?

The Screen Gallery is open all year round to trade partners and customers from all over the world. It is also used for product open days, events and training sessions by appointment or invitation.

WHY CHOOSE PRO DISPLAY

Pro Display takes its place alongside some of the world’s biggest brand names as a leading innovator in our industry. Having been specified on such high profile projects, we have built up a collection of testimonials offered by brands many people know and trust.

Here are examples of just a few:

“We recently installed one of Pro Display’s Mirrorvision® TVs on 60 Minute Makeover and the whole thing looked amazing. I think our director James is looking into a way of incorporating their switchable glass into an upcoming episode. Fingers crossed!”

- ITV, “60 MINUTE MAKEOVER”



“The Switchable Glass Screen you supplied for the 7th series re-vamp of the “Waking the Dead” CCHQ set complimented the aesthetic of the show perfectly. A large glass panel with a central section of switchable film, at times shows back-projected material being discussed by the investigating team, at others, frosted glass or a clear sheet, providing the reflections that are an essential part of the show. This proved ideal for the final three series of this crime investigation drama. Pro Display coped with the changes and quick turn-around inevitable in TV production, to deliver the screen on time and at a very reasonable cost. Thank you very much.”

- BBC, “WAKING THE DEAD”



“We often need a surface to project onto that has the option of it being transparent. The Switchable Film proved to be a superb solution and worked well in multiple installations on set. Several other materials offered good projection surfaces but none were able to provide the option of both a projection surface and transparency. Pro Display understood the tight deadlines of the film industry and were flexible enough to supply us with the required screens at short notice and offered us knowledgeable technical advice. I would definitely use Pro Display again on future projects.”

- 20TH CENTURY FOX, “PROMETHEUS”



“Pro Display was kind enough to step in at the last minute to provide their amazing Switchable Glass Screen to help us build a home for a family in need. This innovative product served as a wall in between two bedrooms where we were able to project images on both sides. It was the only product available that allowed us to achieve our goal in making those rooms “extreme”. Their entire team stepped up in a big way, and we hope to have the opportunity to work with them again!”

- ABC, “EXTREME MAKEOVER”



DID YOU KNOW?

Pro Display screens have been used and specified by the industries leading projector brands - Epson, NEC, Panasonic, Hitachi, Digital Projection and Canon.



EUROPEAN HEADQUARTERS

Unit 5
Shortwood Business Park
Hoyland
Barnsley
S74 9LH
United Kingdom

T : +44(0) 1226 361 306

E : hello@prodisplay.com

WWW.PRODISPLAY.COM

PRODISPLAY®

© Copyright 2020